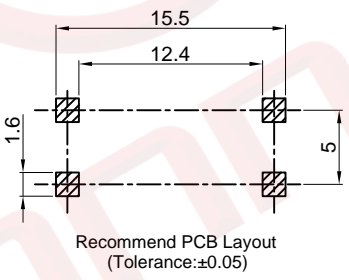
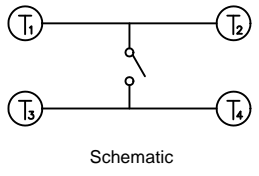
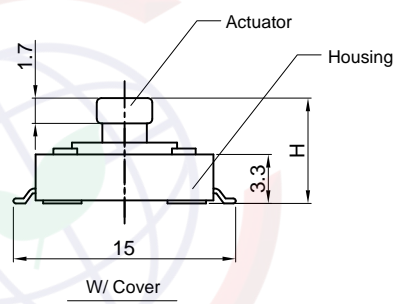
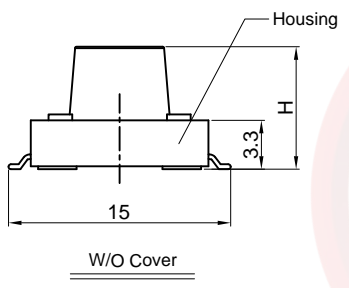
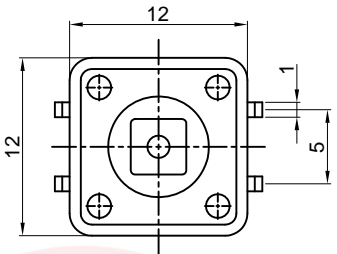
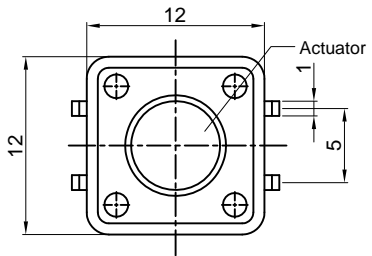


Dept	
Qty	
DC	1
ED	1
IE	1
ISO	1
PD	1
R&D	1
SD	1
QA	1
QC	1
QF	1

The information provided herein is from CONNELY Electronic Co., Ltd. and is confidential. Any disclosure to a party other than the recipient is prohibited. The intellectual properties and its rights contained herein, including but not limited to, trademarks, patents, copyrights, trade secrets, and technical know-how, are owned exclusively by CONNELY or its affiliates. Unauthorized use or reproduction of any part of this document is strictly prohibited. CONNELY may enforce its intellectual property rights at its own discretion, failures or delays to exercise such rights does not constitute a waiver of such rights.



(Series Image-Reference Only)

REV.	DESCRIPTION	DRAWN	CHECKED	APPROVED
A	NEW RELEASE	HP 13/06/05		LJC 13/06/05
D	DRAWING UPDATE	JLZ 06/01/19'		

NOTES:

- Specifications
  - switch function: Single pole Single throw
  - contact rating: 50mA at 12vdc
  - insulation resistance: 100MΩ min at 500vdc
  - contact resistance: 100mΩ max
  - operating life: 100,00 cycles
  - operating force: see below
  - stop strength: place the switch such that vertical, a static load of 3kgf shall be applied in the direction of stem, operation for a period of 15 secs.
  - stroke: (12x12)0.35±0.1mm
  - operation temperature range: -20°C to 70°C
  - storage temperature range: -20°C to +70°C
  - wave soldering: recommended solder temperature at 500°F(260°C)max. 5 seconds, subject to pcb 1.6mm thickness.
  - hand soldering: use a soldering iron of 30 watts, controlled at 608°F(320°C) approximately 2 seconds while applying solder.

3. Product number code:

DS1042 -	X	X	X	X	X	X	X	X	X	X								
	Operating Life	5: 50000 cycles	10: 100000 cycles															
	Operating force	130: 130gf	160: 160gf	170: 170gf	250: 250gf													
	Cover type	X: W/O cover	S: W/ cover (For H=7.3mm only)															
	Packing type	A: polybag	B: tube	R: tape on reel														
	Actuator color	U: blue	K: black	N: brown	R: red													
	Housing color	U: blue	K: black	N: brown	R: red													
	Profile Height (DIM.H, H>7.3 The cover is cylindrical, Black)	1: 4.3mm	2: 5.0mm	3: 7.0mm	4: 7.3mm	5: 9.5mm	6: 13.0mm	7: 7.5mm	8: 8.0mm	9: 8.5mm	10: 12.0mm	11: 12.5mm	12: 17.0mm	13: 7.8mm	14: 9.0mm	15: 10.0mm	16: 11.0mm	17: 6.0mm
	Size	2: 12mmX12mm																

GENERAL TOLERANCE		ANGLE TOLERANCE	
X. ±0.60		X. ±5°	
.X ±0.38		.X ±3°	
.XX ±0.25		.XX ±2°	
DRAWING TYPE	CUSTOMER		
SCALE	1:1	SHEET	1 OF 1
DRAWING NO.	C-DS1042-XXXXXX-D		

PROJECTION		TITLE	TACT SWITCH SMT TYPE	
UNITS	mm	SERIES	DS1042 SERIES	
SHEET SIZE	A4			

晨翔电子有限公司  
CONNFLY CONNELY ELECTRONIC CO. LTD