

A

B

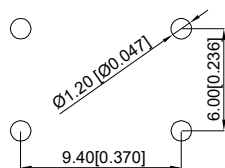
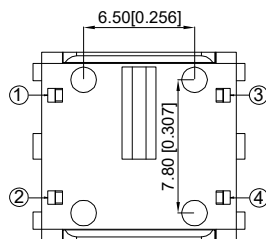
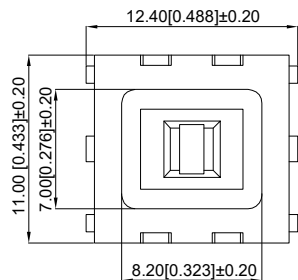
C

D

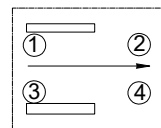
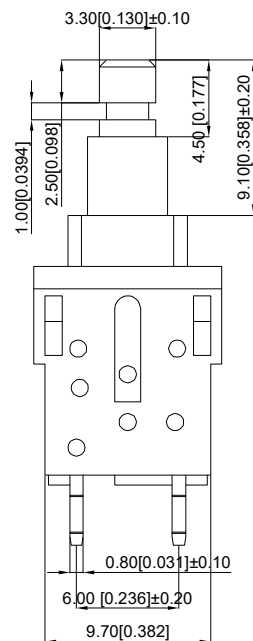
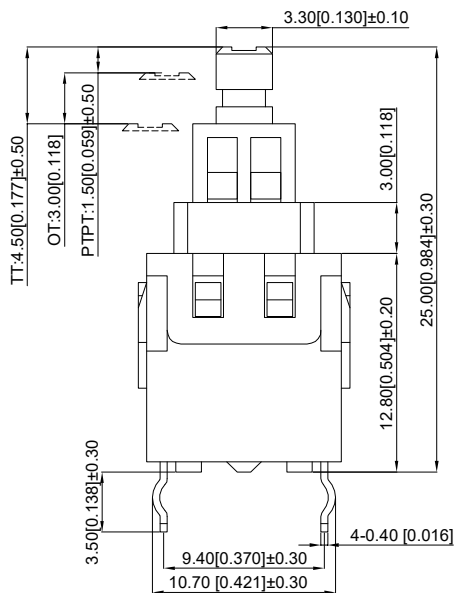
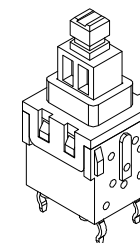
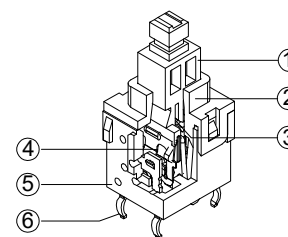
E

F

G



PCB LAYOUT



Circuit diagram

Technical parameter

技术参数

1. Rated current: dc30v 0.1A DC 2V 10 μ A(min)
1.额定电流: DC30V 0.1A DC 2V 10 μ A(min)
2. High voltage resistance: AC 500V (50 / 60Hz) for one minute
2.耐高压: AC 500V (50/60Hz) 持续一分钟
3. Contact impedance: 100 milliohm Max
3.接触阻抗: 100毫欧max
4. Insulation impedance: 100 megohm min.500v DC
4.绝缘阻抗: 100兆欧min.500V DC
5. Operating force: 350 ± 100gf

- 5.操作力: 350±100gf
6. Full stroke: 4.5mm ± 0.5mm
6.全行程: 4.5mm±0.5mm
7. Operation type: No lock
7.运行类型: 无锁
8. Mechanical life: 100000 times
8.机械寿命: 100,000次
9. Load life: 50000 times
9.负载寿命: 50,000次
10. Working temperature: - 10 °C ~ 70 °C
10.工作温度: -10℃~70℃

6	Terminal 端子	Brass 黄铜	4	Ag plating/min=0.15um 镀银/镀层=0.15um
5	Base 底座	PA66	1	Black 黑色
4	Reed 簧片	Phosphor copper 磷铜	2	Ag plating/min=0.15um 镀银/镀层=0.15um
3	Spring 弹簧	Steel wire 钢丝	1	
2	Cover 盖板	POM	1	white 白色
1	Guide core 导芯	PA66	1	white 白色
NO 序号	Part name 部件名	Material 材料	QTY 数量	Remark 备注

A4				
A3				
A2				
A1				
REV	DATE	REVISION	DESCRIPTION	ISSUE



COMMON TOLERANCE

X.XX	± 0.10
X.X	± 0.15
X	± 0.25
ANGULAR	—

UNIT

MM

PROJECTED



PRODUCT NAME:

DRAWN BY

FUYUAN

CHECKED BY

COCO

MODEL NO: TP5124211250

DATE

2019

APPROVAL B

ALEN

Https: www.rocpu.tw

ROCPU TECHNOLOGY CO.,LTD

Copies are issued in strict confidence and shall not be reproduced or copied, or used as the basis of manufacture or sale of apparatus without permission