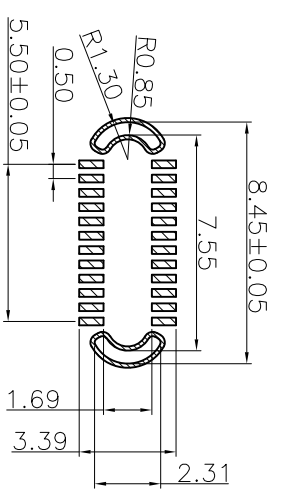
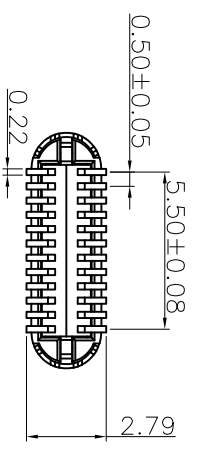
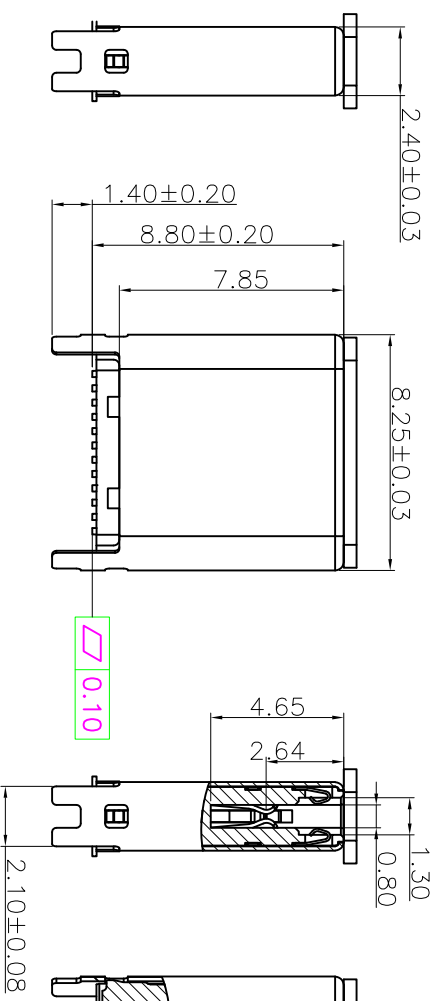
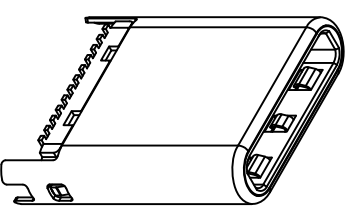
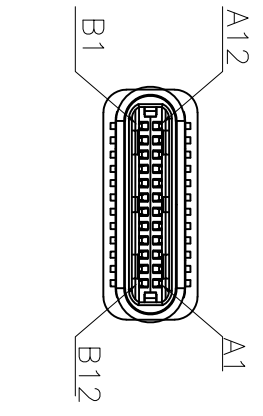


REV. A	ECN. NO.	APPD.
-----------	----------	-------

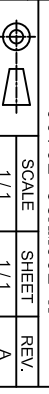


RECOMMENDED P.C.B. LAYOUT
TOLERANCE UNSPECIFIED ±0.05mm

TABLE1:

5	EMC SPRING	Stainless Steel;SUS301, T=0.10mm
4	CONTACT	Copper Alloy;AuNiSn;
3	LATCH	Stainless Steel;SUS301, T=0.20mm
2	HOUSING	LCP Thermoplastic, UL94V-0;
1	SHELL	Stainless Steel;SUS316L, T=0.15mm
NO.	NAME	DESCRIPTION

X. ±0.30	X° ±5°	UNITS mm	NAME(INTENDED USE)	PART NO.(INTENDED USE)	TITLE: Type C 24p 180度立式SMT H=8.8
X ±0.20	X° ±2°	MATL			
XX ±0.10	XX° ±1°	FINISH	APPD: SUNNY	CHKD: USA	DWG NO.: 00702-UCAM002-X
XXX ±0.05	XXX° ±0.5°				
TYPE C CONNECTOR			MINTRON CO.,LTD.		



REV.	ECON. NO.	APPD.
A		

NOTES:

- 1.Material:SEE TABLE1;
- 2.Plating specification,
- 2-1.Contact:
Contact area: Ni50u"Min/Au See Table3;
Solder area: Ni50u"Min/Sn100u"Min.
Other area: Ni 50u"Min.
- 2-2.Shell:NI.
- 2-3.Latch:
Solder area: Ni50u"Min/Sn100u"Min.
Other area: Ni 50u"Min.
- 3.Mechanical Performance ,
3-1.Insertion Force:5~20N;
3-2.Extraction Force:6~20N after 10000 cycles;
3-3.Durability:10000 cycles.
- 4.Electrical Performance,
4-1.Insulation Resistance:100Q Min.
4-2.Contact Resistance :50mΩ Max.
- 4-3.Dielectric Strength :100V AC.
- 5.characteristic impedance:100 Ohm±10%;
- 6.Marketed"▲" is the important control dimentions.
- 7.The product accords with HF STD.

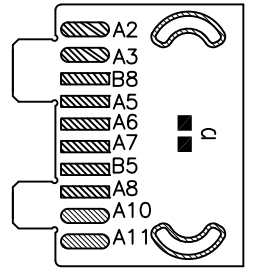
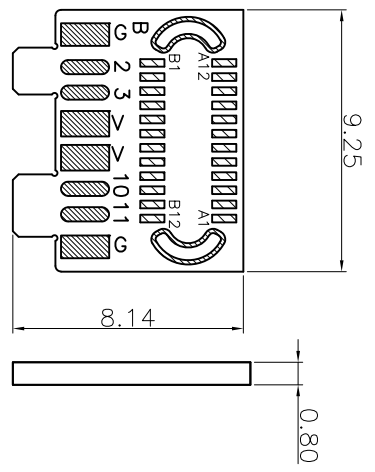
TABLE2:

PINS DESCRIPTION,ONLY USED FOR 3.1 SERIES.

A12	A11	A10	A9	A8	A7	A6	A5	A4	A3	A2	A1
GND	RX2+	RX2-	VBUS	SBU1	D-	D+	CC	VBUS	TX1-	TX1+	GND
GND	TX2+	TX2-	VBUS	Vconn	/	/	SBU2	VBUS	RX1-	RX1+	GND
B1	B2	B3	B4	B5	B6	B7	B8	B9	B10	B11	B12

TABLE3:

2		
1	0019-24-L01-A	PLUG; 外殼鍍銀; 特殊銅Au1u"MIN; LCP 黑色;
NO.	PART NO.	DESCRIPTION



PCB LAYOUT

CONTACT CIRCUIT:

CONN PIN	PCB PIN	CONN PIN	PCB PIN
A1,A12,B1, B12,SHELL	GND	A10	A10
A4,A9,B4,B9	V	A11	A11
A2	A2	B2	B2
A3	A3	B3	B3
A5	A5	B5	B5
A6	D+	B8	B8
A7	D-	B10	B10
A8	A8	B11	B11

X. ±0.30	X°. ±5°	UNITS	mm	NAME(INTENDED USE)	MINTRON CO.,LTD.
.X ±0.20	.X° ±2°	MAT'L			
.XX ±0.10	.XX° ±1°			PART NO.(INTENDED USE)	TITLE: Type C 24p 180度立式SMT H=8.8
.XXX ±0.05	.XXX° ±0.5°	FINISH		APPD: SUNNY	DWG NO.: 00702-UCAM002-X
TYPE C CONNECTOR		Q'TY		CHKD: LISA	SCALE 1/1
				DR: ZOE	SHEET 1/1
				2022-06-10	REV. A