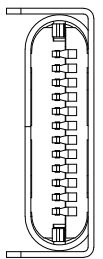
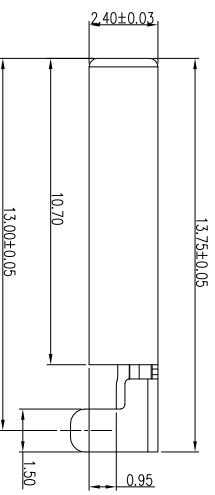
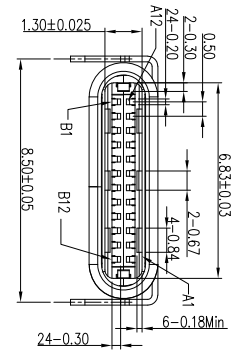
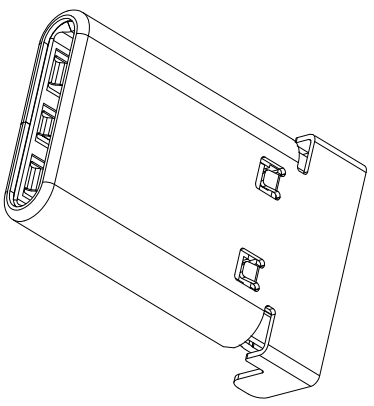
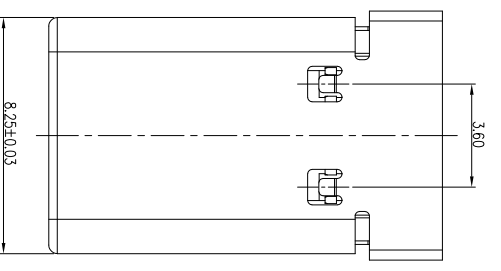
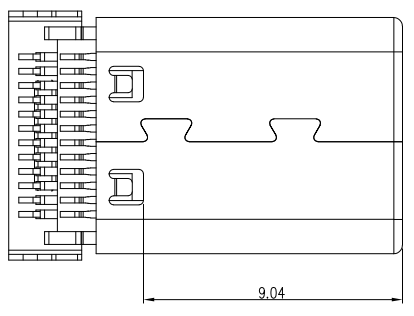
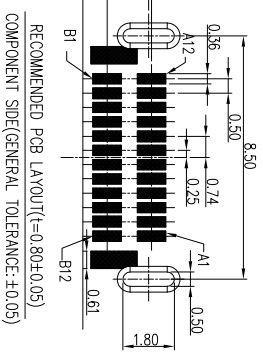


REV.	ECN. NO.	APPD.
A		

**SPECIFICATION**  
**MATERIAL**  
 See drawing  
**STANDARD DATA**  
 Rating current: 30 A  
**ELECTRICAL**  
 Insulator resistance: 100Mohms Min.  
 Withstanding voltage: 100 VAC / minute  
 Contact resistance: 40mohms Max.  
**MECHANICAL**  
 Mating force: 5~20N Max.  
 Umating force : 6~20N Min.  
 Durability: 10,000 cycles Min.



A1	GND	B12	GND
A2	SSTXP1	B11	SSRXP1
A3	SSTXN1	B10	SSRXN1
A4	VBUS	B9	VBUS
A5	CC1	B8	SBU2
A6	DP1	B7	DN2
A7	DN1	B6	DP2
A8	SBU1	B5	CC2
A9	VBUS	B4	VBUS
A10	SSRXN2	B3	SSTXN2
A11	SSRXP2	B2	SSTXP2
A12	GND	B1	GND



**MINTRON CO.,LTD.**

**NAME(INTENDED USE)**  
**PART NO.(INTENDED USE)**  
**TITLE:**  
 TYPE C公头 铆合式 沉板 0.95 双排 SMT

X	±0.30	X°	±5°	UNITS	mm
X	±0.20	X°	±2°	MATL	
.XX	±0.10	.XX°	±1°	FINISH	
.XXX ±0.05	.XXX° ±0.5°			QTY	
TYPE C CONNECTOR					

**APPD:** SUNNY  
**CHKD:** LISA  
**DR:** ZOE  
**DWG NO.:** I3001-UCAM001-X  
**SCALE:** 1/1  
**SHEET:** 1/1  
**REV:** A

