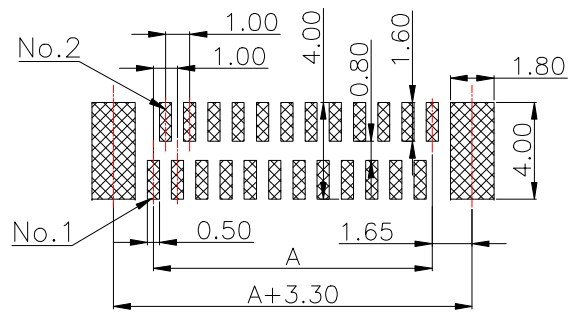
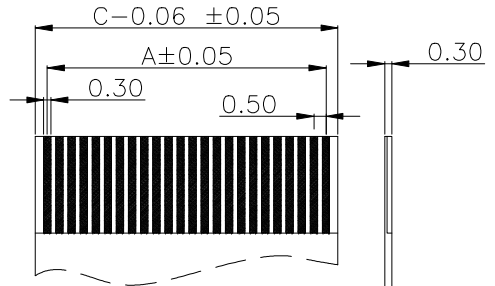
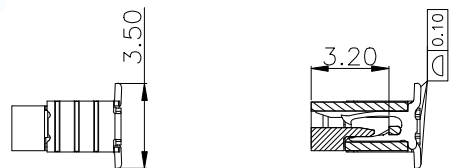
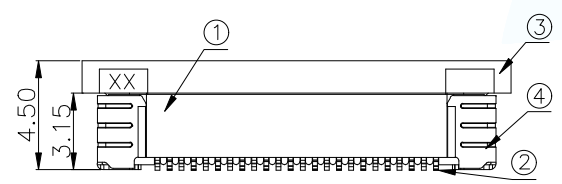
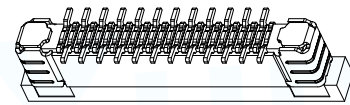
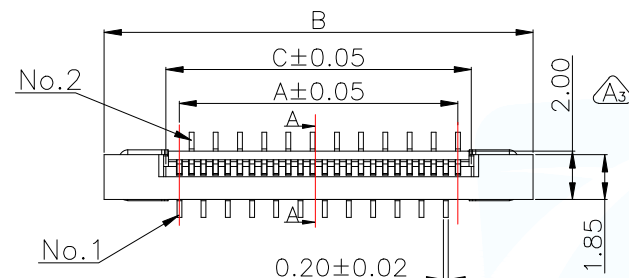
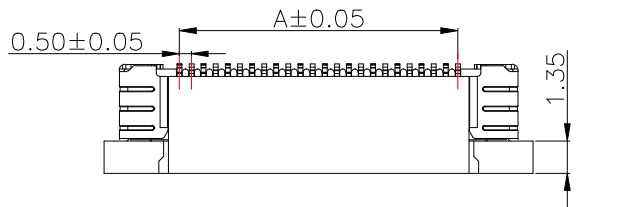


4	FPC 0.5mm间距-焊片	PhosphorBronze T=0.20MM	镀锡	2 PCS	
3	FPC 0.5mm间距-锁扣(窄扣)	LCP/PPS	黑色	1 PCS	
2	FPC 0.5mm间距立贴-PIN	PhosphorBronze T=0.20MM	镀锡/全金	N PCS	
1	FPC 0.5mm间距卧贴-基座	LCP/PA46/PPS	米色	1 PCS	
序号	品名	材料规格	电镀方式/颜色	使用数量	备注

Part No	Pin	A	B	C
FPC-0.5AL-4PB	4	1.50	7.70	2.56
FPC-0.5AL-5PB	5	2.00	8.20	3.06
FPC-0.5AL-6PB	6	2.50	8.70	3.56
FPC-0.5AL-7PB	7	3.00	9.20	4.06
FPC-0.5AL-8PB	8	3.50	9.70	4.56
FPC-0.5AL-9PB	9	4.00	10.20	5.06
FPC-0.5AL-10PB	10	4.50	10.70	5.56
FPC-0.5AL-11PB	11	5.00	11.20	6.06
FPC-0.5AL-12PB	12	5.50	11.70	6.56
FPC-0.5AL-13PB	13	6.00	12.20	7.06
FPC-0.5AL-14PB	14	6.50	12.70	7.56
FPC-0.5AL-15PB	15	7.00	13.20	8.06
FPC-0.5AL-16PB	16	7.50	13.70	8.56
FPC-0.5AL-17PB	17	8.00	14.20	9.06
FPC-0.5AL-18PB	18	8.50	14.70	9.56
FPC-0.5AL-19PB	19	9.00	15.20	10.06
FPC-0.5AL-20PB	20	9.50	15.70	10.56
FPC-0.5AL-21PB	21	10.00	16.20	11.06
FPC-0.5AL-22PB	22	10.50	16.70	11.56
FPC-0.5AL-23PB	23	11.00	17.20	12.06
FPC-0.5AL-24PB	24	11.50	17.70	12.56
FPC-0.5AL-25PB	25	12.00	18.20	13.06
FPC-0.5AL-26PB	26	12.50	18.70	13.56
FPC-0.5AL-27PB	27	13.00	19.20	14.06
FPC-0.5AL-28PB	28	13.50	19.70	14.56
FPC-0.5AL-29PB	29	14.00	20.20	15.06
FPC-0.5AL-30PB	30	14.50	20.70	15.56
FPC-0.5AL-31PB	31	15.00	21.20	16.06
FPC-0.5AL-32PB	32	15.50	21.70	16.56
FPC-0.5AL-33PB	33	16.00	22.20	17.06
FPC-0.5AL-34PB	34	16.50	22.70	17.56
FPC-0.5AL-35PB	35	17.00	23.20	18.06

NOTES:
 额定电流 Current rating: 0.5A
 额定电压 Voltage rating: 50V
 耐电压 Withstand voltage: 500V AC/minute
 接触电阻 Contact resistance :≤40mΩ
 绝缘电阻 Insulation resistance: 100MΩ MIN
 工作温度 Working temperature: -25℃ ~ +85℃

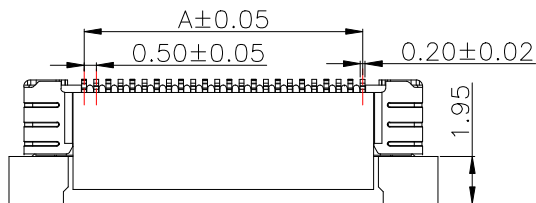


通用FFC寸法
Applicable FFC

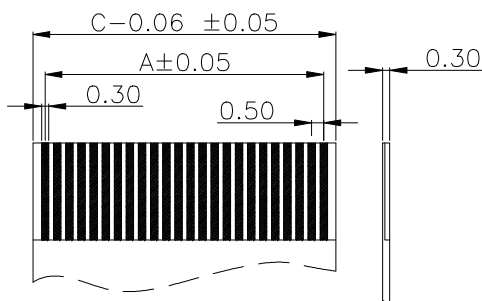
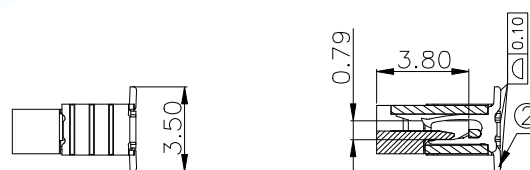
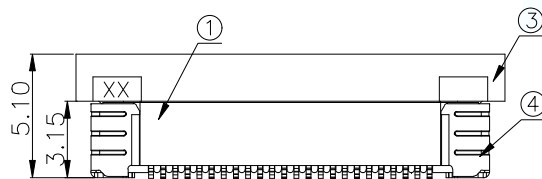
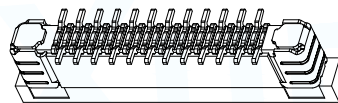
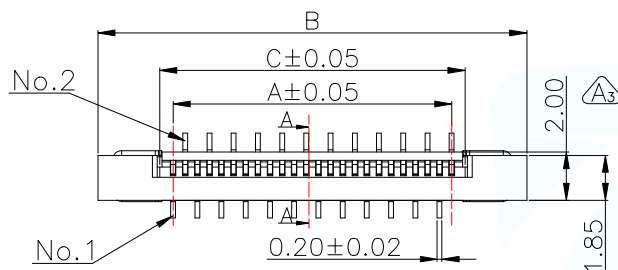
PCB 寸法
PCB Layout

MANUFACTURE DWG			东莞市讯普电子科技有限公司 DongGuan XunPu Electronics Co.,Ltd	
UNLESS OTHERWISE SPECIFIED TOLERANCES			TITLE:FPC 0.5mm间距立式贴片带锁正向 Connector(窄扣)	
DECIMALS:	ANGLES:	PAR	FPC-0.5AL-NPB	
.X:±0.38	.X':±5°	DWN		
.XX:±0.20	.XX':±3°	CHKD		
.XXX:±0.05	.XXX':±1°	APVD		
CUSTOMER COPY		SCALE1:1	UNIT:MM	
		SIZE:A4	SHEET:1F1	REV:A

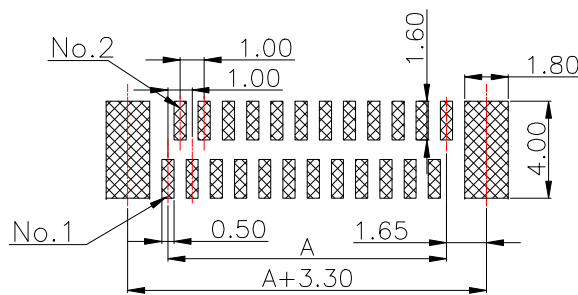
4	FPC 0.5mm间距—焊片	PhosphorBronze T=0.20MM	镀锡	2 PCS	
3	FPC 0.5mm间距—锁扣(窄扣)	LCP/PPS	黑色	1 PCS	
2	FPC 0.5mm间距立贴—PIN	PhosphorBronze T=0.20MM	镀锡/全金	N PCS	
1	FPC 0.5mm间距贴片—基座	LCP/PA46/PPS	米色	1 PCS	
序号	品名	材料规格	电镀方式/颜色	使用数量	备注



NOTES:
 额定电流 Current rating: 0.5A
 额定电压 Voltage rating: 50V
 耐压 Withstand voltage: 500V AC/minute
 接触电阻 Contact resistance: ≤40mΩ
 绝缘电阻 Insulation resistance: 100MΩ MIN
 工作温度 Working temperature: -25℃ ~ +85℃



通用FFC寸法
Applicable FFC



PCB 寸法
PCB Layout

Part No	Pin	A	B	C
FPC-0.5AL-36PB	36	17.50	23.70	18.56
FPC-0.5AL-37PB	37	18.00	24.20	19.06
FPC-0.5AL-38PB	38	18.50	24.70	19.56
FPC-0.5AL-39PB	39	19.00	25.20	20.06
FPC-0.5AL-40PB	40	19.50	25.70	20.56
FPC-0.5AL-41PB	41	20.00	26.20	21.06
FPC-0.5AL-42PB	42	20.50	26.70	21.56
FPC-0.5AL-43PB	43	21.00	27.20	22.06
FPC-0.5AL-44PB	44	21.50	27.70	22.56
FPC-0.5AL-45PB	45	22.00	28.20	23.06
FPC-0.5AL-46PB	46	22.50	28.70	23.56
FPC-0.5AL-47PB	47	23.00	29.20	24.06
FPC-0.5AL-48PB	48	23.50	29.70	24.56
FPC-0.5AL-49PB	49	24.00	30.20	25.06
FPC-0.5AL-50PB	50	24.50	30.70	25.56
FPC-0.5AL-51PB	51	25.00	31.20	26.06
FPC-0.5AL-52PB	52	25.50	31.70	26.56
FPC-0.5AL-53PB	53	26.00	32.20	27.06
FPC-0.5AL-54PB	54	26.50	32.70	27.56
FPC-0.5AL-55PB	55	27.00	33.20	28.06
FPC-0.5AL-56PB	56	27.50	33.70	28.56
FPC-0.5AL-57PB	57	28.00	34.20	29.06
FPC-0.5AL-58PB	58	28.50	34.70	29.56
FPC-0.5AL-59PB	59	29.00	35.20	30.06
FPC-0.5AL-60PB	60	29.50	35.70	30.56

MANUFACTURE DWG			东莞市讯普电子科技有限公司 DongGuan XunPu Electronics Co.,Ltd	
UNLESS OTHERWISE SPECIFIED TOLERANCES			TITLE:FPC 0.5mm间距立式贴片带锁正向 Connector(宽扣)	
DECIMALS:	ANGLES:	PAR	FPC-0.5AL-NPB	
.X:±0.38	.X':±5°	DWN		
.XX:±0.20	.XX':±3°	CHKD		
.XXX:±0.05	.XXX':±1°	APVD		
CUSTOMER COPY		SCALE1:1	UNIT:MM	
		SIZE:A4	SHEET:1F1	REV:A