

**承 认 书**  
**SPECIFICATION FOR APPROVAL**

客户名称 Customer: \_\_\_\_\_

贵司料号CUSTOMER P/N: \_\_\_\_\_

敝司料号INTERIOR P/N: AA04A02010000018A

**贵公司承认印 Approval signatures**

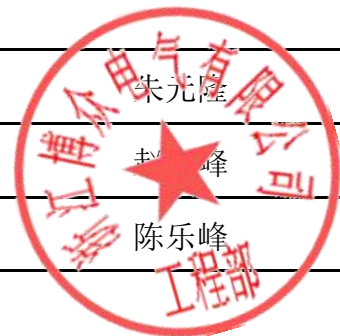
料号/Part No.	签章/Signatures

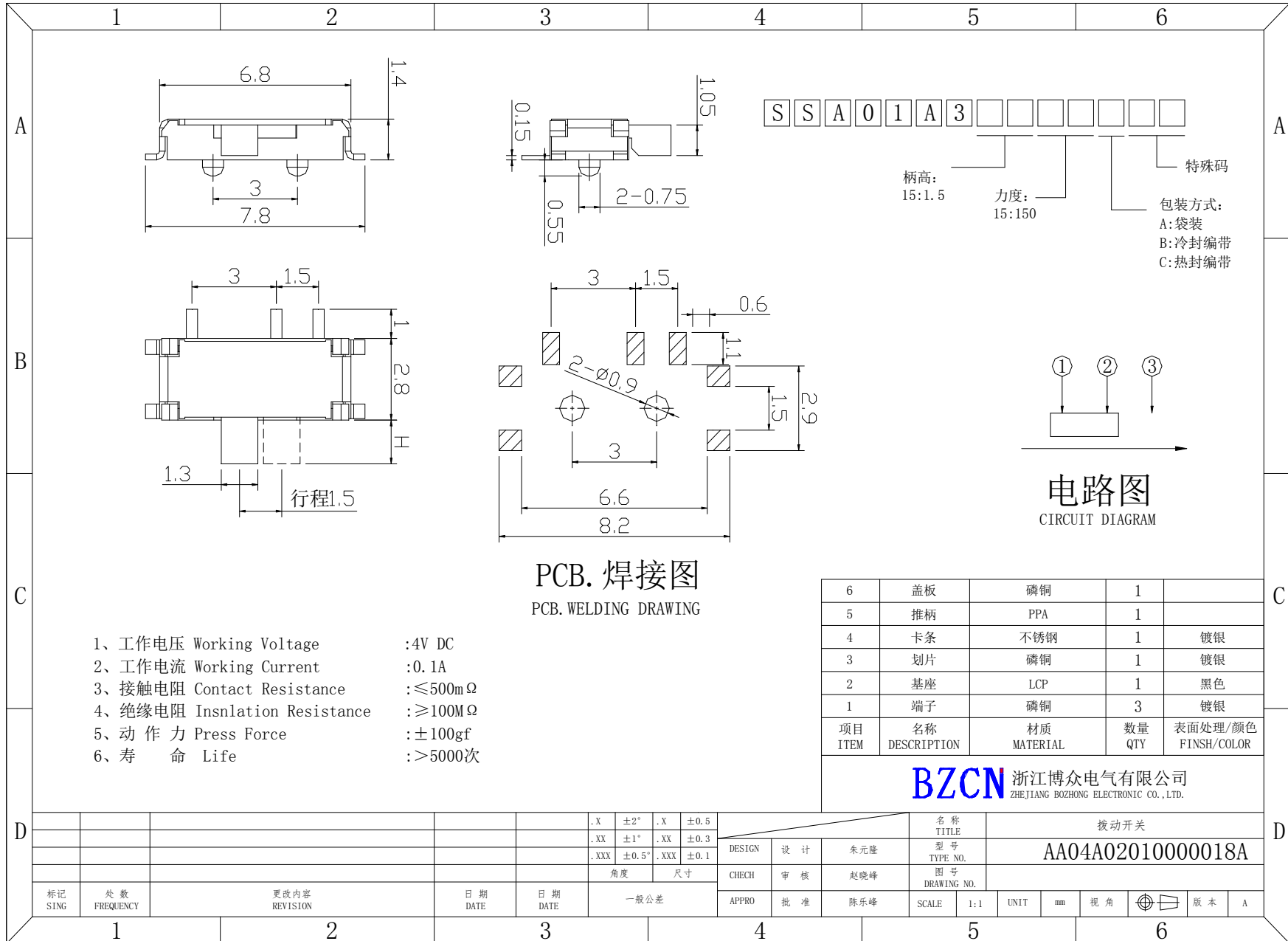
Send us a copy of reference, thank you!

日期 Date: \_\_\_\_\_

地址: 浙江省乐清市虹桥镇信岙工业区  
Add: Xinao Industry Zone Hongqiao Yueqing  
Zhejiang  
电话/Tel: 86-0577-57573366  
传真/Fax: 86-0577-57573373  
Http://www.cnbozhong.com  
Alibaba: Http://dezhimei.cn.alibaba.com

拟制/Drawn	朱光隆
审核/Check	陈乐峰
批准/Approved	陈乐峰





项目 ITEM	名称 DESCRIPTION	材质 MATERIAL	数量 QTY	表面处理/颜色 FINISH/COLOR
6	盖板	磷铜	1	
5	推柄	PPA	1	
4	卡条	不锈钢	1	镀银
3	划片	磷铜	1	镀银
2	基座	LCP	1	黑色
1	端子	磷铜	3	镀银

**BZCN** 浙江博众电气有限公司  
ZHEJIANG BOZHONG ELECTRONIC CO.,LTD.

标记 SING		处数 FREQUENCY	更改内容 REVISION	日期 DATE	日期 DATE	一般公差	名称 TITLE	拨动开关	
						.X ±2° .X ±0.5	DESIGN	设计	朱元隆
						.XX ±1° .XX ±0.3	CHECH	审核	赵晓峰
						.XXX ±0.5° .XXX ±0.1	APPRO	批准	陈乐峰
						角度 尺寸	SCALE	1:1	UNIT mm
							视图	⊕	版本 A
							图号 DRAWING NO.	AA04A02010000018A	

**SPECIFICATION**

1、基本事项 GENERAL SPECIFICATION

1.1 RATING (额定值): DC 4V 0.1A

1.2 使用温度范围: 在-10℃~+60℃温度内使用. PRACTICAL TEMPERATURE RANEG: - 10℃~+60℃.

1.3 测试标准状态: 在沒有指定的情况下测试温度, 湿度, 气压如下:

(1) 温度为5~35℃; (2) 湿度为45%~85%; (3) 气压为86Kpa~106Kpa.

STANDARD ATMOSPHEIC CONDITIONS :

UNLESS OTHERWISE SPECIFIED. THE STANDARD RANGE OF ATMOSPHERIC CONDITIONS FOR MAKING MEASUREMENTS AND TESTS ARE AS FOLLOWS:

(1) AMBIENT TEMPERATURE : 5℃ TO 35℃;

(2) RELATIVE HUMIDITY : 45% TO 85%;

(3) AIR PRESSURE : 86Kpa TO 106Kpa.

2、电气性能规格

ELECTRICAL CHARACTERISTICS

NO.	项目 ITEM	试验条件 CONDITIONS	TEST 要求 REQUIREMENTS
2.1	接触电阻 Contact Resistance	在1KHz微小电流(100mA 以下)测试. MEASURED AT 1KHz SMALL CURRENT(100 mAOR LESS)	≤500mΩ
2.2	绝 缘电阻 Insulation Resistance	输入100V DC电压1分钟, 按以下接触方法测试: (1)接触端子之间. (2)胶座体和排脚之间. APPLY A VOLTAGE OF 100V DC FOR 1 MIN. FOLLOWING CONTACE TEST METHOD:	THE ≥100MΩ

**SPECIFICATION**

2.3	介质耐压 Dielectric voltage proof	输入AC250V(50-60Hz) 电压, 1分钟感度电流 0.5mA, 接触测试方法如下: (1) 接触端子之间. (2) 外壳体和排脚之间. AC 250V(50-60Hz) FOR 1 MIN TRIP CURRENT:0.5mA THE FOLLOWING CONTACT TEST METHOD: (1) BETWEEN TERMINALS. (2) BETWEEN INDIVIDUAL TERMINALS AND FRAME.	没有绝缘破坏等异常 WITHOUT DAMAGE TO PARTS ARCING OR BREAKDOWN ETC.
-----	-------------------------------------	--	---

3、机械性能规格

MECHANICAL CHARACTERISTICS

NO.	项目 ITEM	试验条件 TEST CONDITIONS	要求 REQUIREMENTS
3.1	按力 Operating Force	侧向推动 LATERAL PUSH	参考图面
3.2	作行程 TRAVEL TO CLOSURE 动	在开关推柄运行的水平方向, 以一个等于2倍推力使开关从一个档位运动到下一档位, 测量推柄的移动距离. IN THE HORIZONTAL DIRECTION SWITCH HANDLE OPERATION, WITH AN EQUAL TO 2TIMES THE THRUST OF THE SWITCH FROM ONE POSITION TO THE NEXT GEAR, MOVING DISTANCE MEASURING HANDLE.	参考图面

**SPECIFICATION**

4、 极限电气性能

ENVIRONMENTAL SPECIFICATION

NO.	项目 ITEM	试验条件 TEST CONDITIONS	要求 REQUIREMENTS
4.1	寿命试验 LIFE TEST	操作者以每分钟30次的频率，施加不大于开关1倍的推力做5000次无负荷测试。 AN ACTUATOR SHALL BE WITH A THRUST OF NO GREAT THAN 1 TIMES SWITH POWER TO 5000 CYCLES AT A SPEED OF 30 CYCLES FOR 1 MIN.	1) 接触电阻不超于1MΩ. 2) 寿命:5000次 1) CONTACT RESISTANCESHALL BE 1MΩ MAX. 2) LIFETIME:5000 times
4.2	耐热实验 HEAT TEST	放置在温度85±2℃中96小时后，再放置正常室温中1小时后测定。 THE SWITCH SHALL BE STORED AT A TEMPERATURE OF 85±2℃ FOR 96 HOURS. AND THEN IT SHALL BE SUBJECTED TO THE CONTROLLED RECOVERY CONDITIONS FOR 1 HOUR AFTER WHICH	
4.3	耐冷实验 COLD TEST	放置在温度-20±2℃中96小时后，再放置正常室温中1小时后测定。 THE SWITCH SHALL BE STORED AT A TEMPERATURE OF-25±3℃ FOR 96 HOURS. AND THEN IT SHALL BE SUBJECTED TO THE CONTROLLED RECOVERY CONDITIONS FOR 1 HOUR AFTER WHICH MEASUREMENT SHALL BE MADE.	外观无异常，满足于机械， 电气性能 THERE SHALL BE NO DAMAGE ONAPPEARANCE. MECHANICAL AND ELECTRICAL CHARACTERISTICS SHALL BE SATISFIED.
4.4	潮湿实验 HUMIDITY TEST	放置在40±2℃相对湿度为80~85%环境中96小时后，再将样品放在正常室温中1小时后测定。 THE SWITCH SHALL BE STORED AT A TEMPERATURE OF 40±2℃ AND A HUMIDITY OF 80% TO 85% FOR 96 Hr. THEN THE JACK SHALL BE MAINTAINED AT STANDARD ATMOSPHERIC CONDITION FOR 1 Hr FOR OTHER PROCEDURES.	

**SPECIFICATION**

<p>4.5</p>	<p>盐雾试验 Salt Mist (铁材质不做盐雾要求)</p>	<p>在以下设定条件下进行测量： The switch shall be checked after following test: (1) 温度: 35°C ± 2°C temperature: 35°C ± 2°C (2) 盐溶液浓度: 5 ± 1% (质量百分比) salt solution : 5 ± 1% (solids by mass) (3) 时间: 8h Time: 8h 实验后的盐沉积物后水冲掉 After test, salt deposit shall be removed by running water.</p>	<p>金属件上没有腐蚀斑点 No remarkable corrosion shall be recognized in metal part.</p>
<p>4.6</p>	<p>焊锡条件 SOLDERING CONDITIONS</p>	<p>1) HAND SOLDERING 手焊: DVICE 工具: SOLDER IRON 电烙铁. 270°C MAX., 3 sec Max 2) REFLOW SOLDERING 回流焊: ≤ 250°C</p>	<p>外观无异常, 满足于机械, 电气性能 THERE SHALL BE NO DAMAGE ON APPEARANCE. MECHANICAL AND ELECTRICAL CHARACTERISTICS SHALL BE SATISFIED.</p>