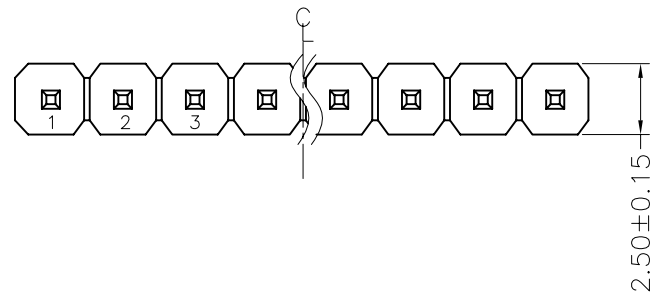


REV.	ECN. NO.	APPD.
A		

NOTES:  
 Current Rating:3.0AMP  
 Contact Resistance:20mΩ max  
 Withstand Voltage:500V AC/DC  
 Insulation Resistance:1000MΩ min  
 Operation Temperature:-40°C to +105°C

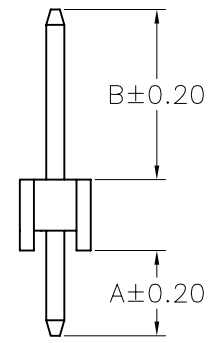
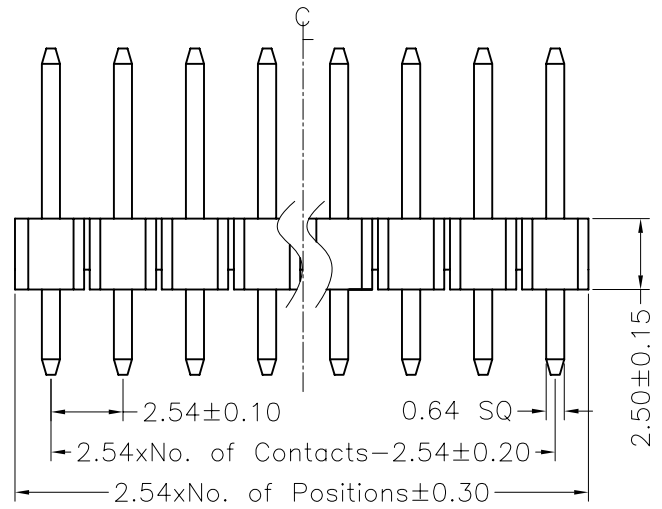
Contact Material:Brass  
 Contact plating:Au or Sn Over Ni  
 Insulator Material:PBT or PA6T+30%GF(UL94V-0)

Recommended P.C.B Layout(Top Side)  
 (PCB BOARD TOLERANCE±0.05)

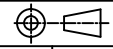


**MTP125-11XXS1- X**

No.of Pins per Row: 01~40  
 Colour  
 R : red  
 Y : yellow  
 W : white  
 G : green  
 B : blue



Dimension antitheses list		
ITEM	A	B
Standard	3.00	6.00
Alternate		

X. ± 0.30	X.° ± 5°	UNITS mm	NAME(INTENDED USE)	MINTRON CO.,LTD.						
.X ± 0.20	.X° ± 2°				MAT'L	TITLE: MTP125-11XXS1-X				
.XX ± 0.10	.XX° ± 1°				FINISH	DWG NO.:				
.XXX ± 0.05	.XXX° ± 0.5°				Q'TY					
PIN HEADER CONNECTOR			APPD: SUNNY	 <table border="1"> <tr> <th>SCALE</th> <th>SHEET</th> <th>REV.</th> </tr> <tr> <td>1/1</td> <td>1/1</td> <td>A</td> </tr> </table>	SCALE	SHEET	REV.	1/1	1/1	A
SCALE	SHEET	REV.								
1/1	1/1	A								
			CHKD: LISA							
			DR: ZOE 2006-11-28							