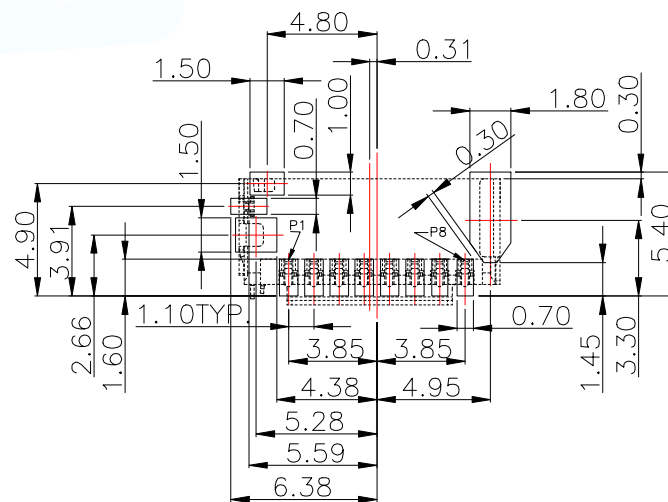
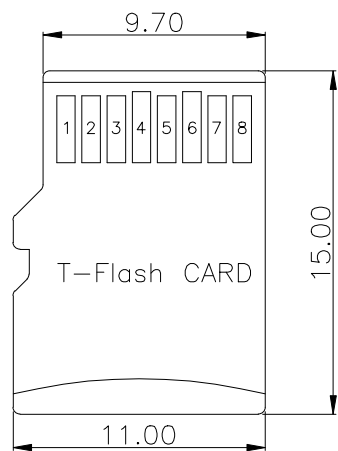
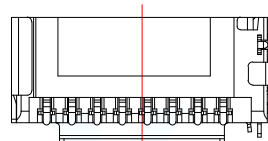
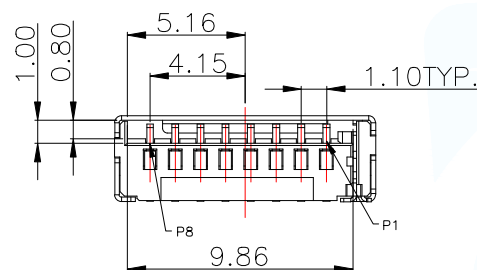
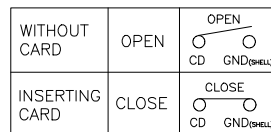


-NOTES-

- Electrical:
  - Contact resistance:50m ohms max.
  - Dielectric withstanding voltage:500V RMS.
  - Insulation resistance:1000M ohms min.
- Mechanical:
  - MATE AND UNMATE FORCE:
  - MATE FORCE:4.5kg MAX
  - UNMATE FORCE:0.5kg MIN
  - Durability:1500cycles MIN.
- Environment:
  - Operating Temperature:-25°to+85°.
- FINISH:
  - TERMINAL: C5191,Ni UNDERPALTED OVERALL  
G/F PALTED ON CONTACT AREA & SOLDER AREA
  - Shell: SUS201, Ni UNDERPLATED OVERALL.  
G/F PALTED ON SOLDER AREA
  - HOUSING: LCP UL94V-0 ,BLACK



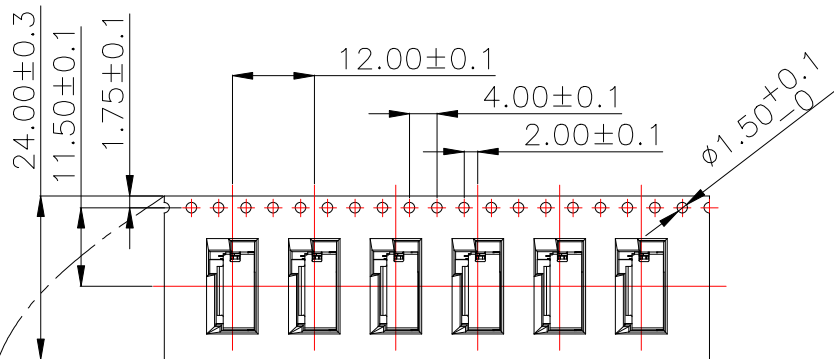
RECOMMENDED PCB LAYOUT  
GENERAL TOLERANCE ±0.05



TF CARD PIN DEFINE			
PIN NO.	NAME	YYPE	DESCRIPTION
1	DAT2	I/O/PP	DATE LINE(BIT2)
2	CD/DAT3	I/O/PP	CARD DETECT DATE LIN(BIT3)
3	CMD	PP	COMMAND RESPONSE
4	VDD	S	SUPPLY VOLTAGE
5	CLX	I	CLOCK
6	VSS	S	SUPPLY VOLTAGE GROUND
7	DAT0	I/O/PP	DATE LINE(BIT0)
8	DAT1	I/O/PP	DATE LINE(DIT1)

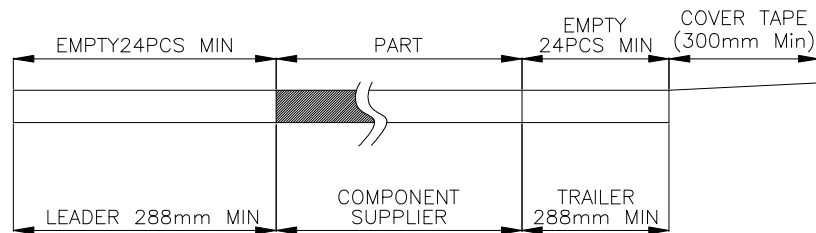
MANUFACTURE DWG			东莞市讯普电子科技有限公司 DongGuan XunPu Electronics Co.,Ltd	
UNLESS OTHERWISE SPECIFIED TOLERANCES			TITLE: TF 规格带侦测PIN	
DECIMALS:	ANGLES:	CUSTOMER COPY	PAR	TF-121-ARP8H30
X.X:±0.30	X':±2'		DWN	
X.XX:±0.20			CHKD	
X.XXX:±0.10			APVD	
		SCALE1:1	UNIT:MM	
		SIZE:A4	SHEET:1F1	REV:A

User Direction of Unreeling



NOTES

1. NUMBER OF CONNECTORS:SEE TABLE 2
2. LEAD TAPE LENGTH

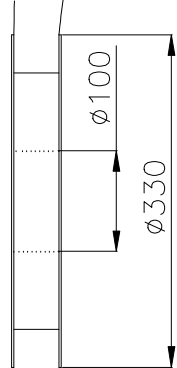


COVER TAPE PEELING ANGLE:165°~180°  
PEELING FORCE:20~130g

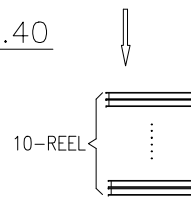
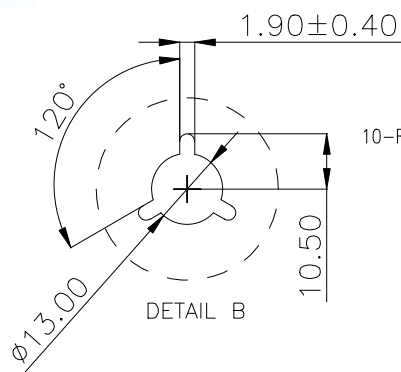
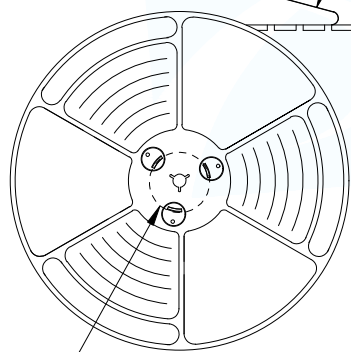
CARRIER TAPE

3. QUANTITY: 10REEL/CARTON

User Direction of Unreeling

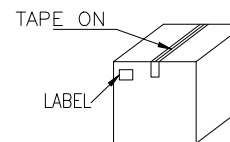


DETAIL B



4-TRIANGLE PARTITION

CARTON  
345\*345\*310mm



序号	DIM A	料号	包装
1	3.0	TF-121-ARP8H30	1500PCS/REEL;15000PCS/CARTON

MANUFACTURE DWG			东莞市讯普电子科技有限公司 DongGuan XunPu Electronics Co.,Ltd	
UNLESS OTHERWISE SPECIFIED TOLERANCES			TITLE: TF 规格带引脚PIN	
DECIMALS:	ANGLES:		PAR	TF-121-ARP8H30
X.X:±0.30	X.':±2'		DWN	
X.XX:±0.20			CHKD	
X.XXX:±0.10			APVD	
		CUSTOMER COPY	SCALE1:1	UNIT:MM
			SIZE:A4	UNIT:MM
			SHEET:1F1	REV:A