

REV.	SPECIFICATION	ECN NO.	APPD.
R4		HCN190103	

Material and Plating:

Housing: PBT, UL94V-0, Beige.

Contacts: Copper Alloy.

Gold Plated on Contact Area and 80u" Min Tin or Gold Flash Plated on Solder Tail over Nickel 50u" Min.

Lock: Phosphor bronze.

Electrical Characteristics:

Current Rating: 2 AMP.

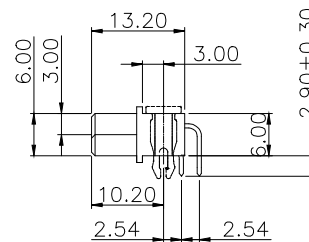
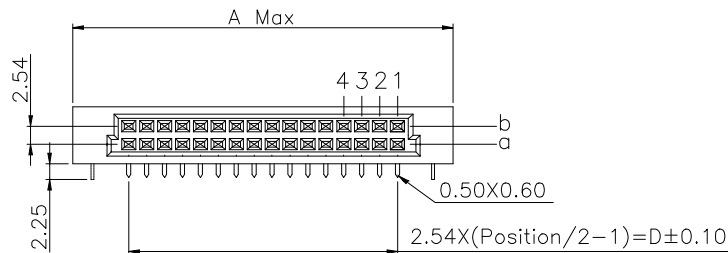
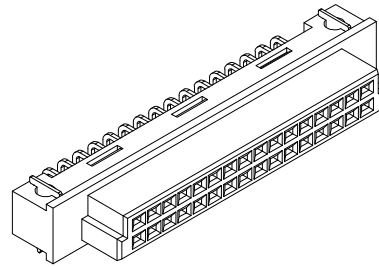
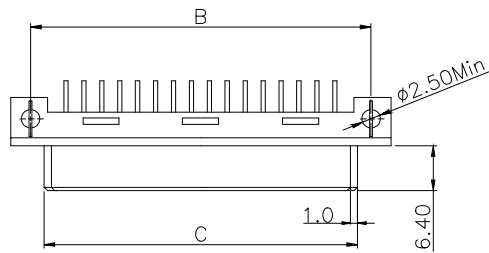
Dielectric Withstanding Voltage: AC1000V For 1 minute.

Insulator Resistance: 1000MΩ min. at DC 500V.

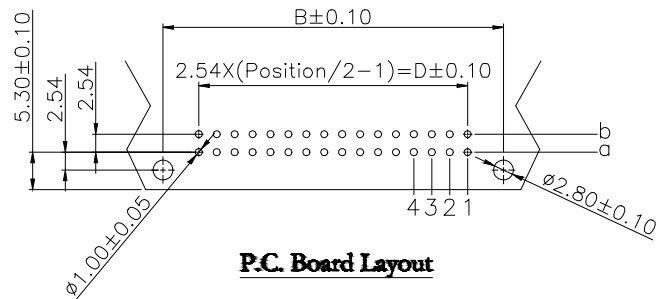
Contact Resistance: 20mΩ max. at DC 100mA.

Operating Temperature: -55°C ~+125°C.

***RoHS Compliant**



Dimension				
Position	A	B	C	D
32/16/8	54.00	48.26	44.40	38.10
20/10	38.80	33.02	29.20	22.86



P.C. Board Layout

9001- 3 8 xx 1 C xx x A
Series
 3: 2.54mm
 4: 5.08mm
Female
Position
 1: Dip Length
A: Tiny Package
Blank: W/O Lock
L: With Lock
00: G/F
 10: 10u"
 15: 15u"
 30: 30u"
C: Dip Tin
Contact Gold
G: Gold

Contact Arrange	Rows with Contacts	Position	Pin	Pitch
	sb	32	32	254mm
	sb	20	20	
	a-	32	16	508mm
	sb	32	16	
	sb	20	10	508mm
	a-	32	8	

Tolerances	Dwg. No.	9001D38001	
x = ±0.5	Projection		
.x = ±0.25	Unit	mm	Scale 1:1
.xx = ±0.15	Drawn By	dyq 01/04'19	

Title: 9001 Series
DIN41612 Half
Q,1/3Q Type Female

P/N: 9001-3(4)8xx1CxxxA			
SHEET	1/1	Ver.No.	R4