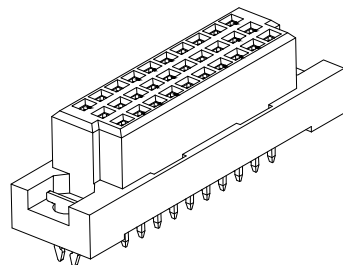
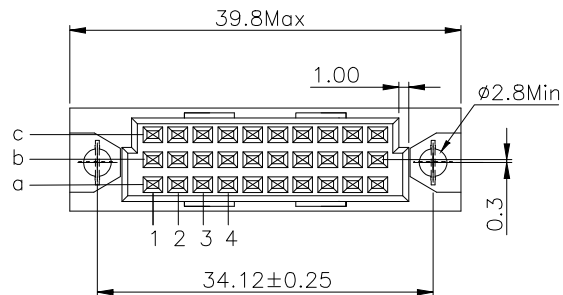


REV.	SPECIFICATION	ECN NO.	APPD.
R5		BCN2203/0	



Material and Plating:

Housing: PBT, UL94V-0, Beige.

Contacts: Copper Alloy

Lock: Phosphor Bronze.

Gold Plated on Contact Area and 80u" Min Tin Plated or Gold Flash on Solder Tail or Press Fit over Nickel 50u" Min.

Electrical Characteristics:

Current Rating: 2 AMP.

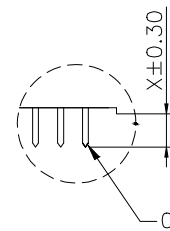
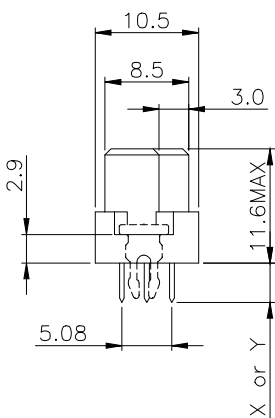
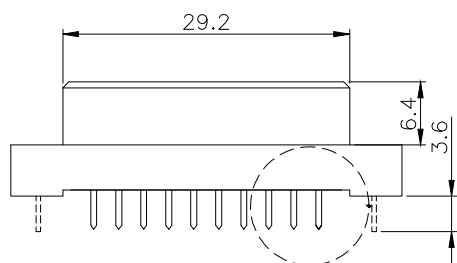
Dielectric Withstanding Voltage: AC 1000V For 1 minute.

Insulator Resistance: 10⁶ MΩ min. at DC 500V.

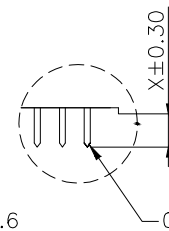
Contact Resistance: 20mΩ max. at DC 100mA.

Operating Temperature: -55°C~+125°C.

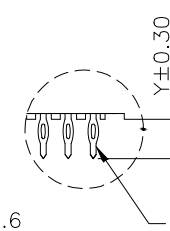
***RoHS Compliant**



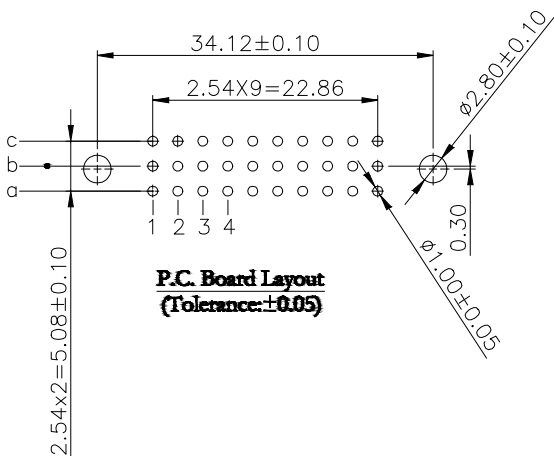
Dip1,2



Dip:W1,W2



Press Fit Type



**P.C. Board Layout
(Tolerance: ±0.05)**

9001- 1 6 xx x C xx x x A

Series: 1: 2.54mm, 6: Female

Position: 1: Dip Length, 2: Dip Length, W1: Dip Length, W2: Dip Length

A: Tray Package
Blank: W/O Lock
L1: With Lock

Blank: Dip
P: Press Fit

00: G/F
10: 10 u"
15: 15 u"
30: 30 u"

C: Selective Gold Plated
G: Gold Plated

Length	1	2	W1	W2
X	4.0	2.5	13	17
Y	4.6	6.3	13	17

2.54mm	30	a b c	
	20	a - c	
	10	a - -	
Pitch	Pin No.	Rows With Contacts	Contact Arrange

Tolerances	Dwg. No.	9001D16025		Title:	
x = ±0.5	Projection			9001 Series	
.x = ±0.25	Unit	mm	Scale	DIN41612 Half	
.xx = ±0.15	Drawn By	ZY 3/23'22	1:1	C Type Female	

WingTAT [®]			
深圳市格林柏电子技术开发有限公司			
P/N: 9001-16xxx CxxxxA			
SHEET	1/1	Ver.No.	R5