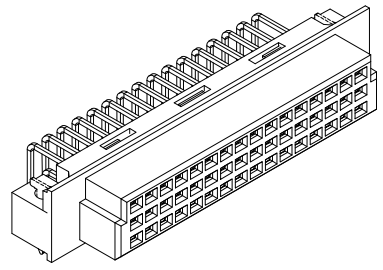
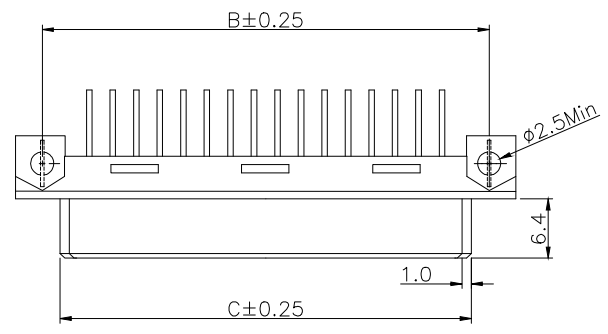


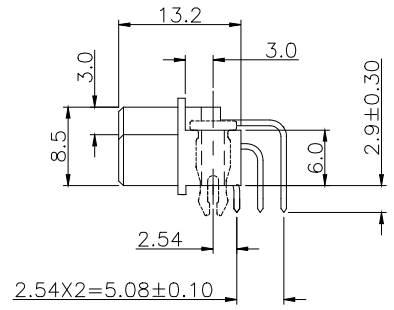
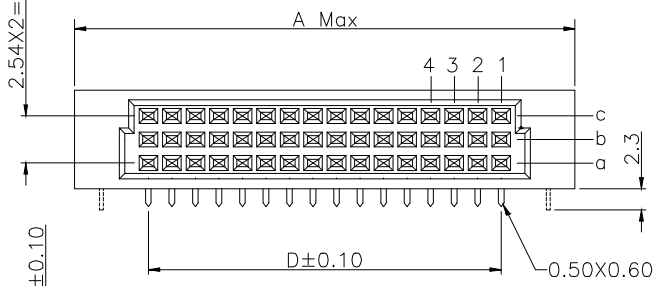
REV.	SPECIFICATION	ECN NO.	APPD.
R5		ECN220502	



**Material and Plating:**  
Housing: PBT, UL94V-0, Beige  
Contacts: Copper Alloy  
Lock: Phosphor Bronze  
Gold plated on Contact Area and 80u" Min Tin Plated on Solder Tail over Nickel 50u" Min.

**Electrical Characteristics:**  
Current Rating: 2 AMP.  
Dielectric Withstanding Voltage: AC 1000V For 1 minute.  
Insulator Resistance: 10<sup>6</sup> MΩ min. at DC 500V.  
Contact Resistance: 20mΩ max. at DC 100mA.  
Operating Temperature: -55°C~+125°C .

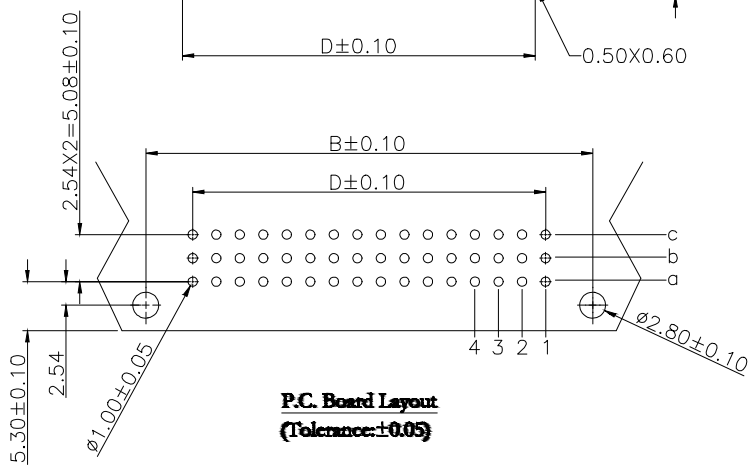
**\*RoHS Compliant**



Dimension				
Position	A	B	C	D
48/32/24/16/8	54.0	48.26	44.40	38.10
30/20/15/10/5	38.8	33.02	29.20	22.86

Pitch	Position (P)	Rows with Contacts	Contact Arrangement	P/N
2.54mm	48	a-b-c		9001-18481C--
	32	a-c		9001-18321C--
	30	a-b-c		9001-18301C--
	20	a-c		9001-18201C--
	16	a--		9001-18161C--
5.08mm	10	a--		9001-18101C--
	24	a-b-c		9001-28241C--
	16	a-c		9001-28161C--
	15	a-b-c		9001-28151C--
	10	a-c		9001-28101C--
	8	a--		9001-28081C--
	5	a--		9001-28051C--



**9001- 1(2) 8 xx 1 C xx L1 A**

Series: 1: 2.54mm, 2: 5.08mm, 8: Female, Position: 1: Dip Length

Blank: W/O Lock, L1: With Lock

00: G/F, 10: 10", 15: 15", 30: 30"

C: Selective Gold Plated

A: Tray Package

Tolerances	Dwg. No.	9001D18001	
x = ±0.5	Projection		
.x = ±0.25	Unit	mm	Scale 1:1
.xx = ±0.15	Drawn By	ZY 05/05'22	

**Title:**  
9001 Series  
DIN41612  
Half R Type Female

**WingTAT**<sup>®</sup>  
深圳市格林柏电子技术开发有限公司  
P/N: 9001-1(2)8xx1CxxL1A

SHEET	1/1	Ver. No.	R5
-------	-----	----------	----