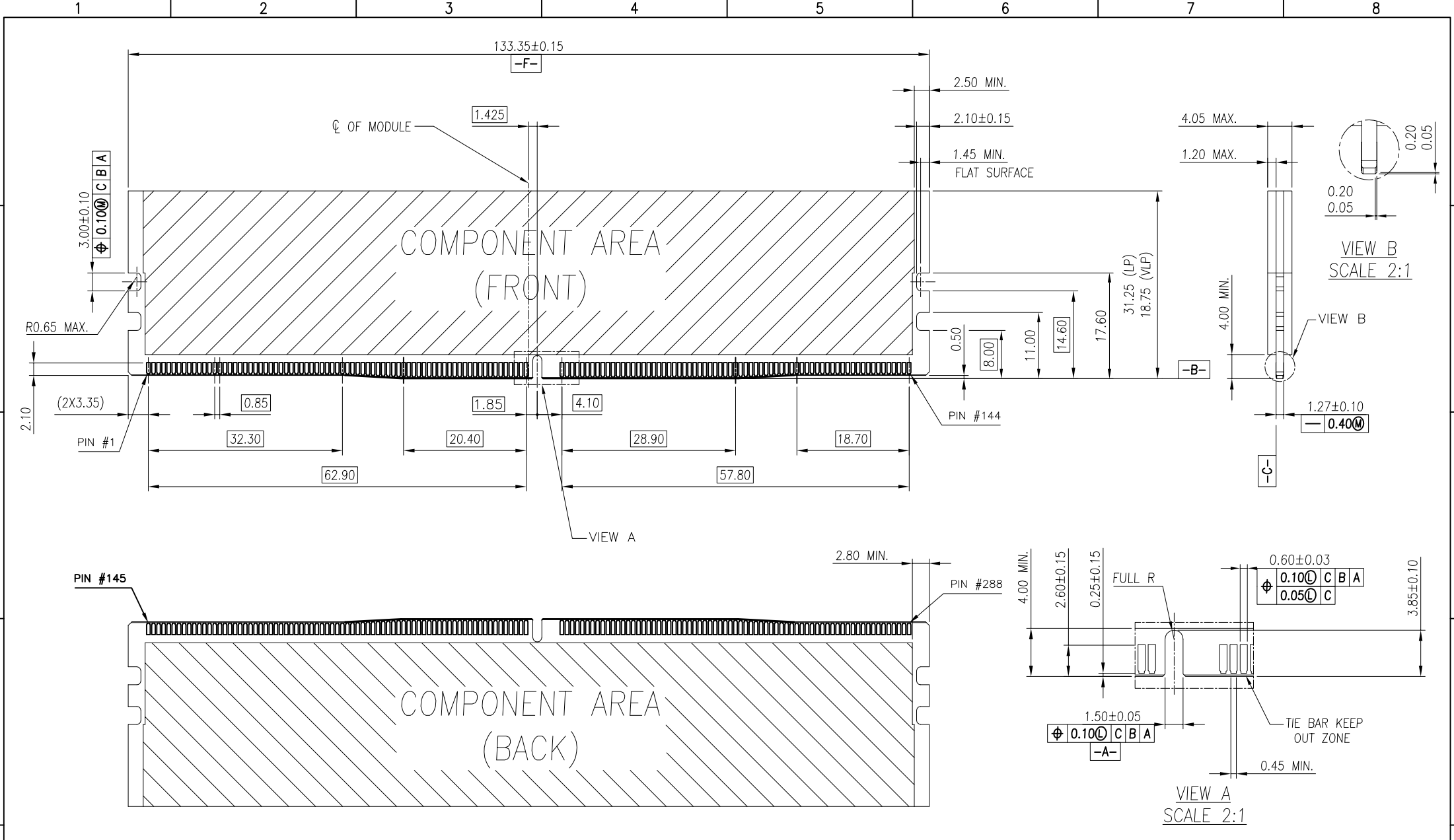
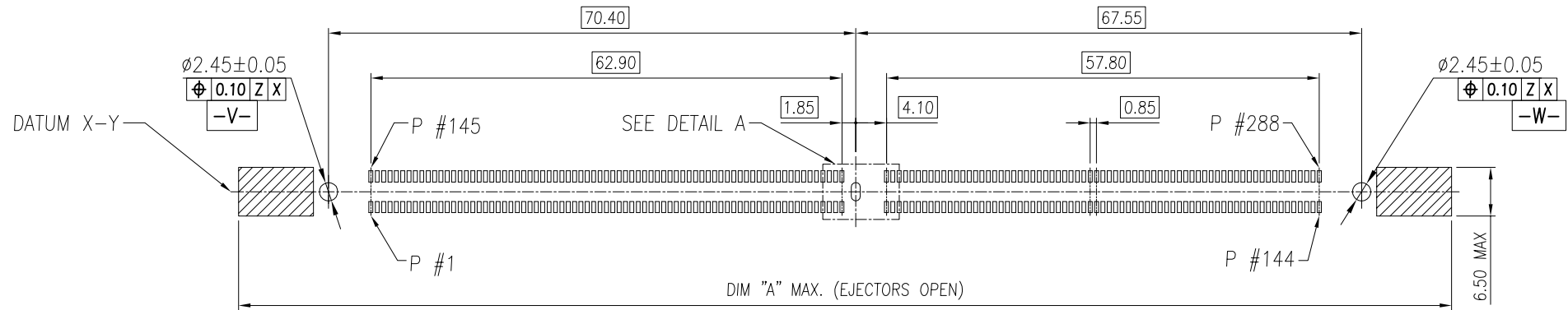


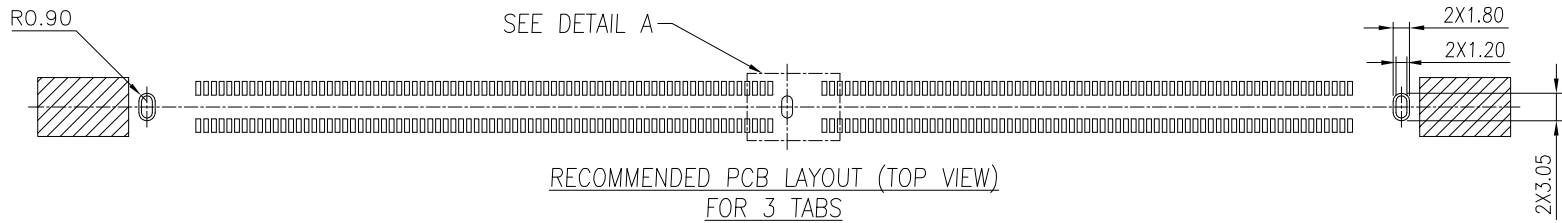
				TOLERANCE		<b>UMax conn</b> 东莞市友贸实业有限公司 DONGGUAN UMAX ENTERPRISE LIMITED		TITLE: DDR 5, 288P MEMORY SOCKET UDIMM, SMT TYPE CONNECTOR				
REV	ECN NO.	NAME	DATE	.XXX±0.10	.XXX'±			APPD:	MAT'L:	DWG NO.	UNITS	SCALE
3	---	Lin xuejun	Oct,12,2022	LINEAR	ANGLES	APPD: Jason	MAT'L:	C-90414	MM	1 : 1	1 OF 4	3
2	---	Lin xuejun	Aug,03,2022	X.±0.40	X'.± 3'							
1	---	Lin xuejun	Jan,10,2022	.X±0.30	.X'±	DRWN: Lei Songping	Q'TY:					
0	---	Lei Songping	Jul,13,2021	.XX±0.20	.XX'±							



				TOLERANCE		<b>UMax conn</b> 东莞市友贸实业有限公司 DONGGUAN UMAX ENTERPRISE LIMITED		TITLE: DDR 5, 288P MEMORY SOCKET UDIMM, SMT TYPE CONNECTOR			
				LINEAR	ANGLES			PART NO. 90414-XX0XX-XX			
				X.±0.40	X'± 3'	APPD: Jason	MAT'L:	DWG NO. C-90414			
				.X±0.30	.X'±	CHKD: Schumi	FINISH:	UNITS	SCALE	SHEET	REV
REV	SEE SHEET 1	NAME	DATE	.XX±0.20	.XX'±	DRWN: Lei Songping	Q'TY:	MM	1 : 1	2 OF 4	3
	ECN NO.			.XXX±0.10	.XXX'±						CUSTOMER



RECOMMENDED PCB LAYOUT (TOP VIEW)  
FOR 3 BOARDLOCKS



RECOMMENDED PCB LAYOUT (TOP VIEW)  
FOR 3 TABS



DETAIL A  
SCALE 2:1

TOLERANCE	
LINEAR	ANGLES
X.±0.40	X'± 3'
.X±0.30	.X'±
.XX±0.20	.XX'±
.XXX±0.10	.XXX'±

**UMax conn** 东莞市友贸实业有限公司  
DONGGUAN UMAX ENTERPRISE LIMITED

APPD: Jason    MAT'L:

CHKD: Schumi    FINISH:

DRWN: Lei Songping    Q'TY:

TITLE: DDR 5, 288P MEMORY SOCKET UDIMM, SMT TYPE CONNECTOR			
PART NO.		90414-XX0XX-XX	
DWG NO.		C-90414	
	UNITS	SCALE	SHEET
	MM	1 : 1	3 OF 4
			REV
			3

SEE SHEET 1			
REV	ECN NO.	NAME	DATE

NOTES:

1. MATERIAL :

- 1.1 HOUSING: HIGH PERFORMANCE RESINS, GLASS FIBER, UL94 V-0, COLOR: SEE PART NO..
- 1.2 LATCH: HIGH PERFORMANCE RESINS, GLASS FIBER, UL94 V-0, COLOR: SEE PART NO..
- 1.3 CONTACTS: COPPER ALLOY.
- 1.4 BOARDLOCK: STAINLESS STEEL.
- 1.5 TABS: STAINLESS STEEL.

2. FINISH :

2.1 CONTACT

- [SEE PART NO..] GOLD PLATING ON THE CONTACT AREA.
- 100u" MIN. MATTE-TIN PLATING ON THE SOLDERING AREA.
- 50u" MIN. NICKEL UNDERPLATING OVERALL.

6	7	8	9	10
20.70	147.50	158.50	162.00	LONG
20.30	145.50	156.00	156.00	MIDDLE
20.20	142.00	151.50	152.00	SHORT
DIM. D	DIM. C	DIM. B	DIM. A	LATCH TYPE

PART NO..

90414-XX 0 X X-X X X

CONTACT

AREA PLATING

15: 15u" Au

30: 30u" Au

SOLDERTAIL LENGTH

0- FOR SMT TYPE

HOUSING COLOR

1: BLACK

2: NATURAL

3: YELLOW

4: BLUE

PACKAGING OPTIONS

BLANK: HARD TRAY

M: HARD TRAY WITH MYLAR

BOARDLOCK TYPE

BLANK: BOARDLOCK

1: TAB

LATCH TYPE

1: SHORT LATCH

2: LONG LATCH

3: MIDDLE LATCH

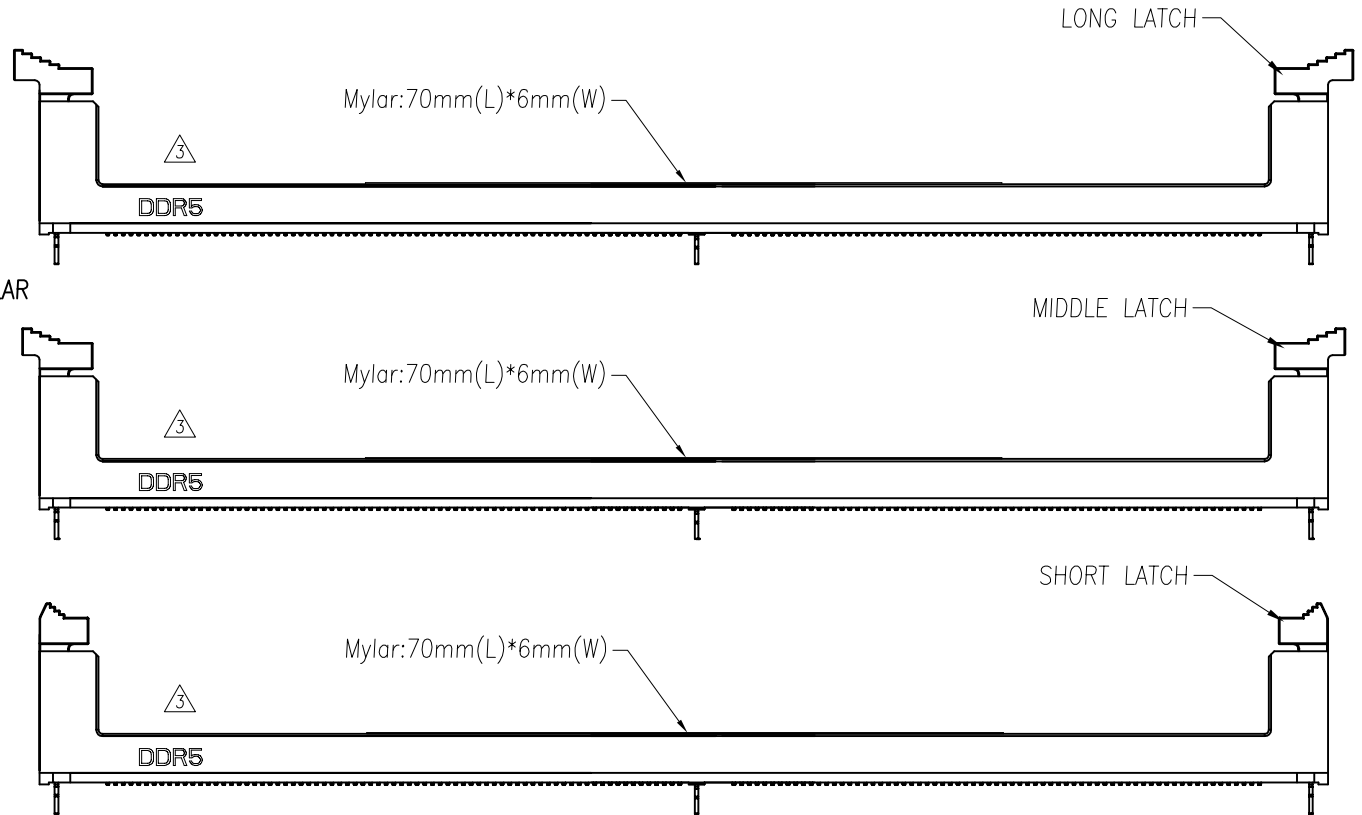
LATCH COLOR

1: BLACK

2: NATURAL

3: YELLOW

4: BLUE



TOLERANCE	
LINEAR	ANGLES
X.±0.40	X'± 3'
.X±0.30	.X'±
.XX±0.20	.XX'±
.XXX±0.10	.XXX'±

**UMax conn** 东莞市友贸实业有限公司  
DONGGUAN UMAX ENTERPRISE LIMITED

TITLE: DDR 5, 288P MEMORY SOCKET UDIMM, SMT TYPE CONNECTOR

PART NO. 90414-XX0XX-XX

DWG NO. C-90414

APPD: Jason MAT'L:  
CHKD: Schumi FINISH:  
DRWN: Lei Songping Q'TY:

UNITS	SCALE	SHEET	REV

SEE SHEET 1			
REV	ECN NO.	NAME	DATE