

REVISION RECORD				
REV	ECN	DESCRIPTION	DRFT	DATE
A		NEW	Z.S.P	22.8.26

NOTES1:
 UL Standard
 1. Rated voltage/current : 300V / 10A
 2. Withstanding voltage : AC1600V/1Min.

IEC Standard

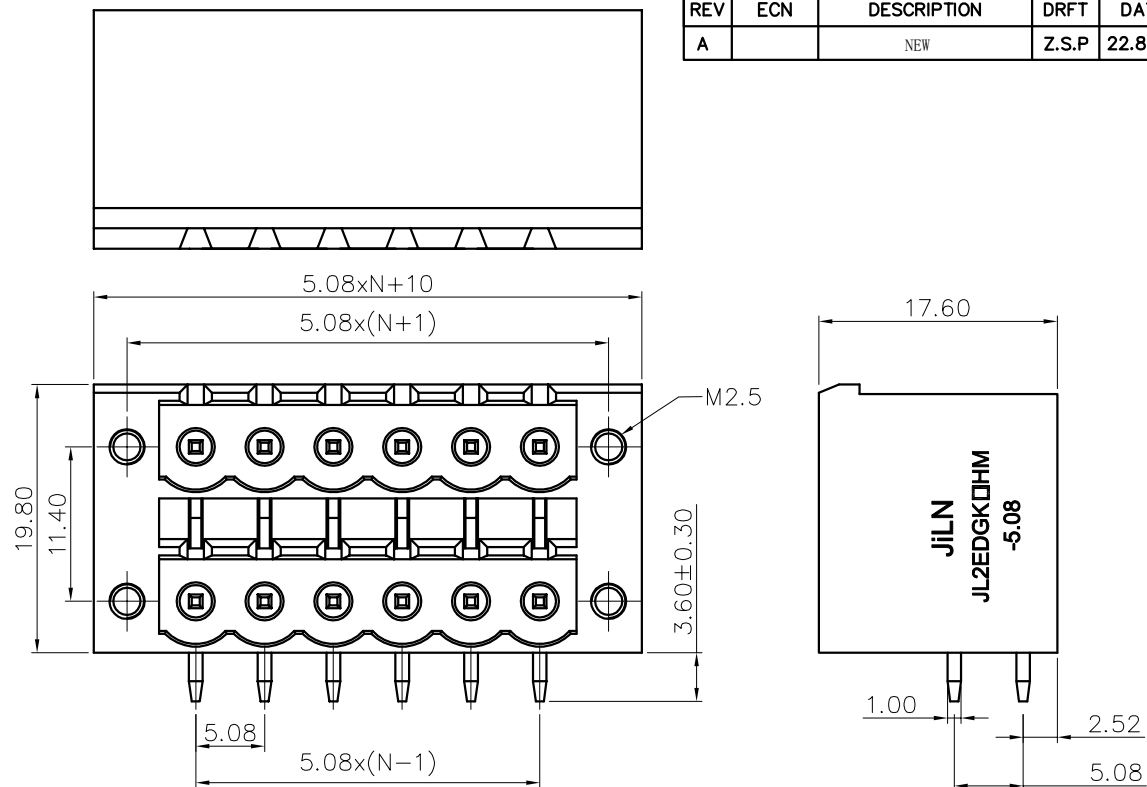
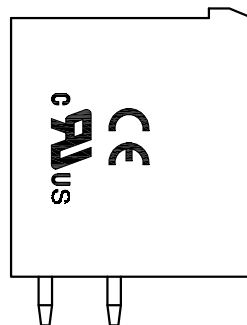
1.

Pollution degree	2	2	3
Overvoltage category	II	III	III
Rate impulse voltage(KV)	4KV	4KV	4KV
Rate voltage(V)	630V	400V	250V
Rate current(A)	8A		

NOTES2:
 1. Dimension shall be interpreted per ASME Y14.5-2009
 2. Pitch : 5.08mm, Poles : N=04~36P
 3. Operating temperature: -40°C~+120°C
 4. Undimensioned tolerances:

Pitch range in mm		Nominal dimension range in mm					-	∩	□
TO	Over	TO	Over	TO	Over	TO	Over	TO	
6	6 TO 10	30	30 TO 60	60	60 TO 100	100	100 TO 150	150	
±0.15	±0.20	±0.30	±0.30	±0.50	±0.70	±1.00	±1.30	±2'	

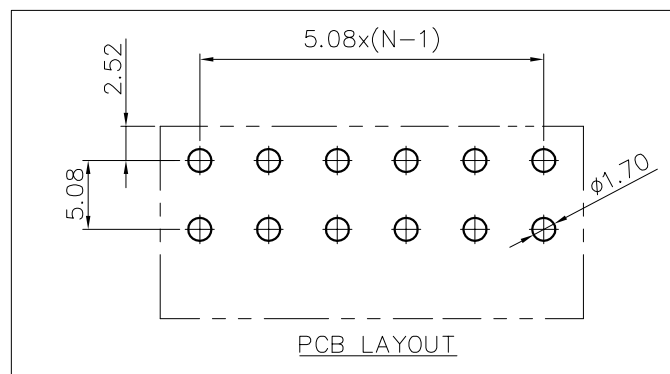
5. RoHS Compliance



Ordering Information

JL2EDGKRHM- 508 XX G 0 1

Pitch 508=5.08PH
 No.of pins 2x2P~2x18P
 Housing Color B=Black, G=Green, U=Blue, R=Red, W=White, Y=Yellow, O=Orange, E=Grey
 Packing 0=Pe bag, A=Tray



DRAW	SHUANGPING ZHENG	SCALE	FIT	东莞市锦凌电子有限公司 DONGGUAN JINLING ELECTRONIC CO.,LTD	
CHECK	LICHAO LIU	UNIT	mm		
APPROVE	YONGLIANG GAO	SIZE	A4	PART NO.	JL2EDGKRHM-508XXG01
		SHEET	1/1	TITLE:	JL2EDGKRHM-THR-5.08-2XNP插拔式公座/弯脚/绿色/带耳
		PROJ.			