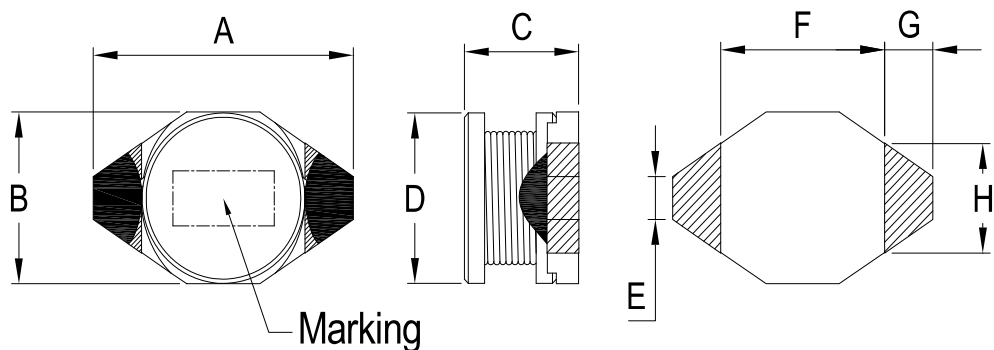
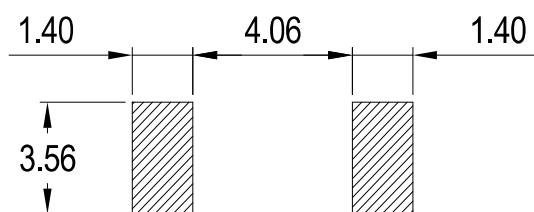


SMD POWER INDUCTORS

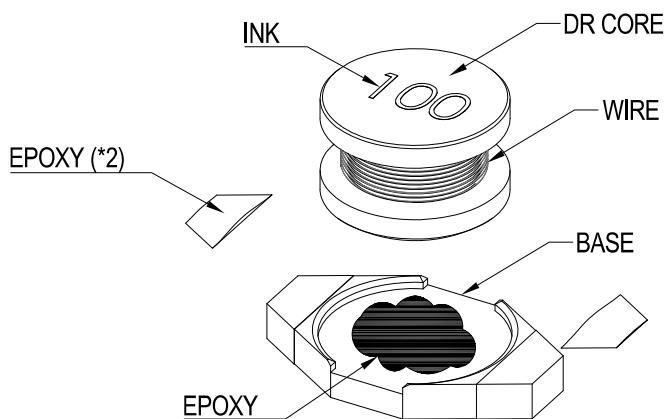
CONFIGURATION AND DIMENSIONS



Land Pattern (unit:mm)



A	6.60	Max.	mm
B	4.45	Max.	mm
C	2.92	Max.	mm
D	4.00	±0.3	mm
E	1.27	±0.3	mm
F	4.32	±0.3	mm
G	1.02	±0.3	mm
H	2.50	±0.3	mm



ELECTRICAL CHARACTERISTICS

PART NO .	Inductance (μ H)	Tolerance (%)	DCR (Ω) Max	Rated DC current (A)
				1.1 IDC Max.
SLQ1608C1R0MTT	1.00	$\pm 20\%$	0.050	2.90
SLQ1608C1R5MTT	1.50	$\pm 20\%$	0.050	2.60
SLQ1608C2R2MTT	2.20	$\pm 20\%$	0.070	2.30
SLQ1608C3R3MTT	3.30	$\pm 20\%$	0.080	2.00
SLQ1608C4R7MTT	4.70	$\pm 20\%$	0.090	1.50
SLQ1608C6R8MTT	6.80	$\pm 20\%$	0.130	1.20
SLQ1608C100MTT	10.00	$\pm 20\%$	0.160	1.10
SLQ1608C150MTT	15.00	$\pm 20\%$	0.230	0.90
SLQ1608C220MTT	22.00	$\pm 20\%$	0.370	0.70
SLQ1608C330MTT	33.00	$\pm 20\%$	0.510	0.58
SLQ1608C470MTT	47.00	$\pm 20\%$	0.640	0.50
SLQ1608C680MTT	68.00	$\pm 20\%$	0.860	0.40
SLQ1608C101MTT	100.00	$\pm 20\%$	1.270	0.31
SLQ1608C151MTT	150.00	$\pm 20\%$	2.000	0.27
SLQ1608C221MTT	220.00	$\pm 20\%$	3.110	0.22
SLQ1608C331MTT	330.00	$\pm 20\%$	3.800	0.18
SLQ1608C471MTT	470.00	$\pm 20\%$	5.060	0.16
SLQ1608C681MTT	680.00	$\pm 20\%$	9.200	0.14
SLQ1608C102MTT	1000.00	$\pm 20\%$	13.800	0.10

Note :

1. Rated Current (IDC) :

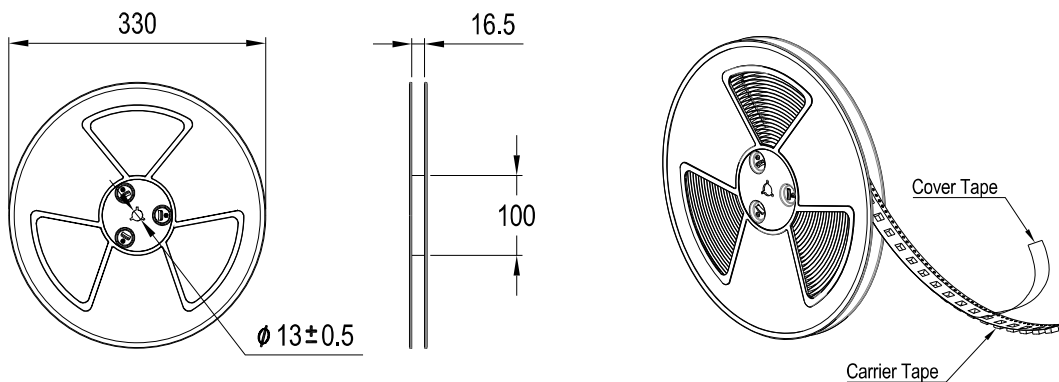
1.1 IDC : Base on Inductance change($|\Delta L/L_0| \leq 10\%$)

$$\Delta L = L_{(IDC)} - L_{0A}$$

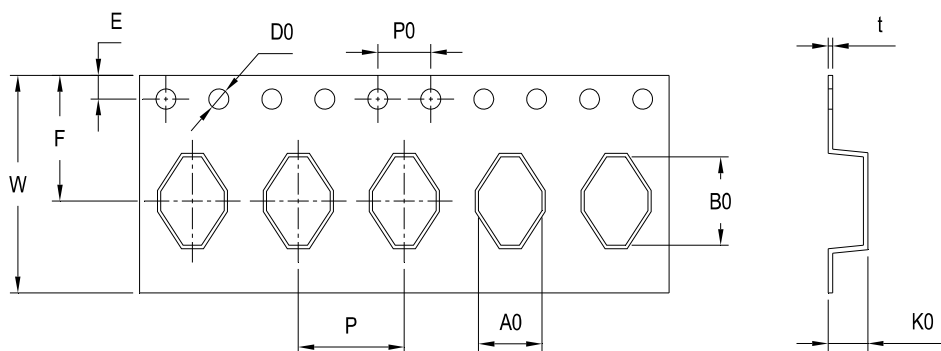
1.2 Test Freq. : 100KHz 、0.1V

PACKAGING INFORMATION

REEL DIMENSIONS :

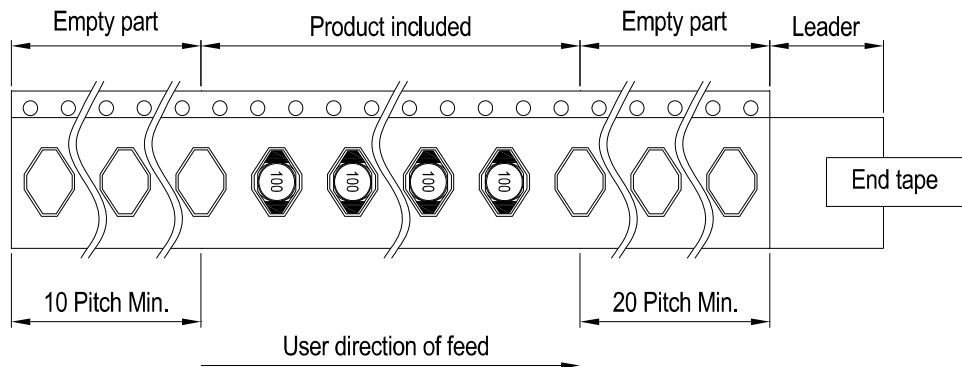


CARRIER TAPE DIMENSIONS :



W	E	F	P	A0	B0	D0	P0	K0	t
16 \pm 0.2	1.75 \pm 0.1	9.25 \pm 0.1	12.0 \pm 0.1	4.8 \pm 0.1	6.5 \pm 0.1	1.5 \pm 0.1	4.0 \pm 0.1	3.0 \pm 0.1	0.35 \pm 0.05

TAPE DIMENSIONS :



Packaging Quantity :

The quantity 2500pcs is standard for 1 reel.