

# 产 品 规 格 确 认 书

## Specification Approval Sheet

客户名称: \_\_\_\_\_

**Customer name**

产品名称: \_\_\_\_\_ CR2477T 3.0V

**Model Name**

物料编码: \_\_\_\_\_ FLY. CR2477T

**Model Numbe**

送样日期: \_\_\_\_\_

**Date**

◆ 出厂签章:

工程部	品质部	业务部	批准
黄烈清	王仁树	王培	陈远洪
送样数量:		确认书份数:	

◆ 客户确认签章:

审 核	批 准	确认签章

效 率 服 务 创 造 品 牌      诚 信 品 质 铸 就 未 来

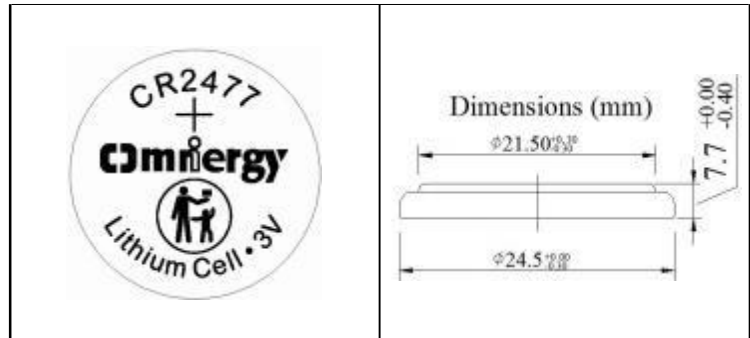
电话:0769-83269986 地址: 东莞市寮步镇松湖智谷产业园A4栋4F

# Lithium Manganese Dioxide Battery

## Model CR2477T

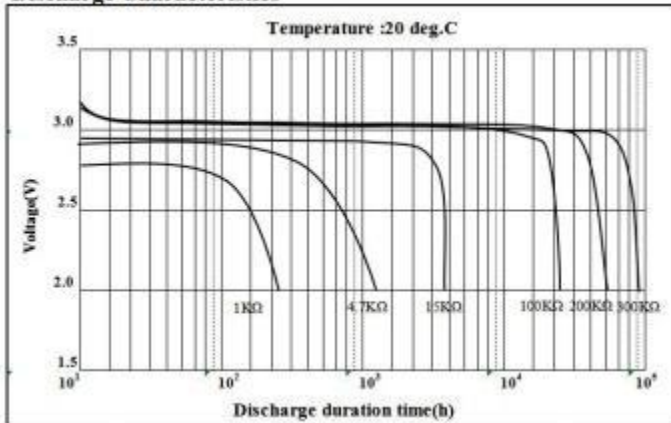
### Specifications

Nominal Discharge current	0.6mA
Nominal Voltage	3V
Nominal Capacity	1000(mAh)
Continuous standard load	4.7(k $\Omega$ )
Maximum pulse current	25mA
Operating temperature	-40°C~85°C
Weight	10.5 (g)
UL Recognition	MH29853
Storage temperature range	0C~30 °C
Storage humidity range	35%~75%

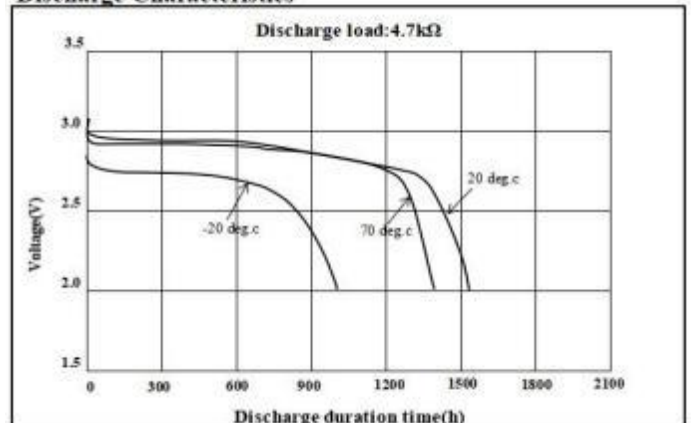


### Characteristics

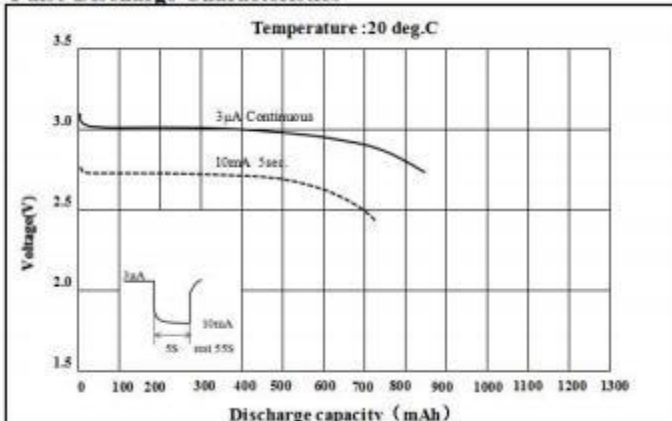
Discharge Characteristics



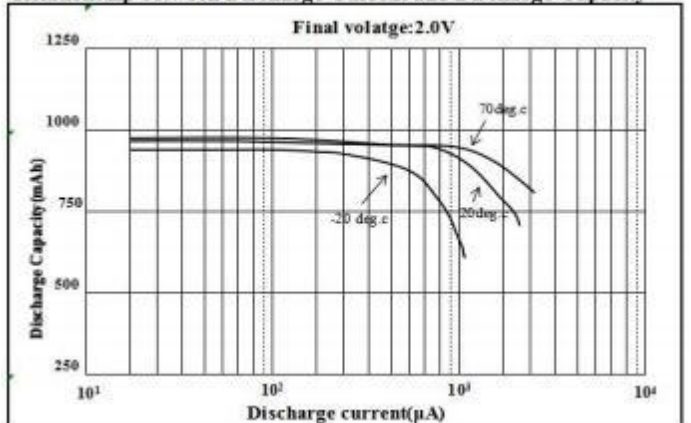
Discharge Characteristics



Pulse Discharge Characteristics



Relationship between Discharge Current and Discharge Capacity



### < WARNING >

- (1) Never charge the battery. Charging the battery may cause seethe of the battery electrolyte or increase of the battery internal pressure. Leakage, heating, explosion or ignition of the battery may be caused as a result of it.
- (2) Keep away from infants. If infant happens to swallow the battery, consult a doctor Immediately
- (3) Note: if the temperature is higher than the continuous use + 70 °C or below -20 °C. Please contact the Power Glory

## ■ Characteristics :

[TABLE 1]

TEST ITEMS	TEMPERATURE	INITIAL	AFTER 12 MONTHS	REMARKS
Open- circuit Voltage	20±2°C	3.0V TO 3.4V	3.0V TO 3.4V	
Closed- circuit Voltage	20±2°C	3.0V TO 3.4V	3.0V TO 3.4V	Standard Load Resistance . 0.8 Sec.

[ TABLE 2 ]

TEST ITEMS	TEMPERATURE	INITIAL	AFTER 12 MONTHS	REMARKS
Service Life	20±2°C	See graph for details	≥ 98% of initial capacity	Continuous Discharge Under Standard Load to 2.0 V End-Voltage

[ TABLE 3 ]

TEST ITEM	STORAGE TEMP	STORAGE PERIOD	REQUIREMENT	REMARKS
Service Life After Storage At High Temperature	60 ±2°C	20 Days	≥ 98% of initial capacity	Continuous Discharge At 2.0 ± 2 °C Under Standard Load To 2.0 V End- Voltage After Storage.

[ TABLE 4 ]

TEST ITEM	REQUIREMENT	TEST CONDITIONS
Leakage Characteristics	No Leakage	Temperature: 45 ± 2°C , Relative Humidity: 75% Storage: 30 Days Shall Be Inspected By Visual Means

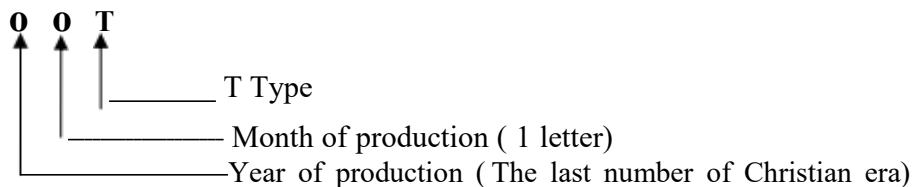
[ TABLE 5 ]

TEST ITEM	REQUIREMENT	TEST CONDITIONS
Self- discharge	2% or Below	Continuous Discharge Under Standard Load To 2.0 V End- voltage After 12 Months Storage At 20°C . ( To Obtain From The Mean Value Of The Same Lot )

## ■ Markings:

Markings on batteries :

5. 1. 1 Battery type : CR2477T
5. 1. 2 Brand of battery: **Omnergy**
5. 1. 3 Polarity : + [(-) shall not be indicated]
5. 1. 4 Manufacturing marks : The year and month of production shall be marked on the negative (-) terminal side



[[Example] 61T..... Manufactured in January 2016

6XT     Manufactured in October 2016

6YT     Manufactured in November 2016

6ZT     Manufactured in December 2016

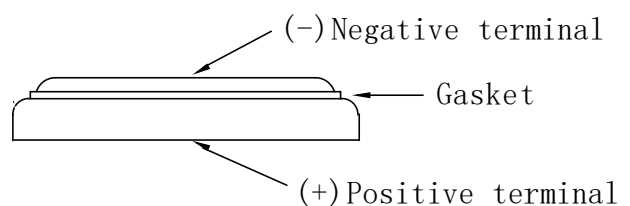
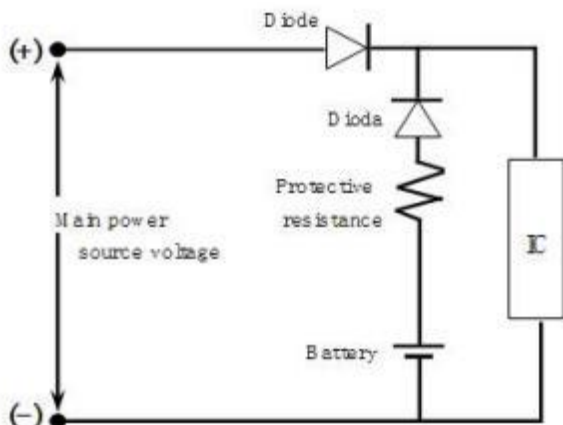
Month of production.

- January to September -- 1- 9

- Oct, Nov, Dec, -----X, Y, Z

## ■ Precautions in Designing a Memory Backup Circuit

A primary lithium battery is not rechargeable. When used for memory backup in combination with another power source, current may flow into the battery from the other source. To prevent this, include a protection diode and resistor in the circuit so that no battery charging or over discharging can occur. Allowable Range of Diode Back-Leakage Current .To prevent the battery from being charged by the main power source, be sure to use a back-current prevention diode and a protection resistor. Select a silicon diode or a Schottky diode with minimum leakage current, and design the circuit so that the amount of charging due to leakage current does not exceed 1% of the nominal battery capacity over the total period of use.



Back-current Prevention Diode and Protection Resistor Used

---

**■ Maximum Allowable Charge Current to Battery**

Model	Maximum Abnormal charging current	Model	Maximum Abnormal charging current	Maximum Abnormal charging voltage
CR1216	2.5mA	CR2032	10mA	5V
CR1220	10mA	CR2330	10mA	
CR1225	10mA	CR2354	10mA	
CR1616	10mA	CR2430	15mA	
CR1620	10mA	CR2450	15mA	
CR1632	10mA	CR2477	15mA	
CR2016	10mA	CR3032	15mA	
CR2025	10mA			

Protection resistance R must exceed the value calculated in the following formula:

$$R \geq \frac{V(\text{Main power source voltage})}{I(\text{Maximum allowable charge current per battery})}$$

**■ Precautions for Mounting****1. Overlapping Batteries**

Lithium Manganese Dioxide Battery is shaped as shown below. It has exposed positive(+) and negative(-) metallic surfaces with a thin cylindrical seal, called the gasket, in between them. When the batteries are overlapped or mixed together in a disorderly way, their positive(+) and negative(-) terminals touch each other, causing short-circuits.

**2. The Batteries Put in a Metallic Container or on a Metallic Plate**

Similar to the overlapping battery problem, when the batteries are put in a metallic container or on a metallic plate, their positive(+) and negative(-) terminals may short-circuit through the conductive surface, depending on how the batteries are positioned.

**3. When The Battery is Held with Metallic Tweezers**

When held with a pair of metallic tweezers as shown, the battery short-circuits through the tweezers.

**4. When The Battery Lead Plates Touch Each Other**

When the battery lead plates bend and touch each other or either terminal, the battery short-circuits.

**5. Solder Bridges**

Solder may bridge between circuit board conductors, causing a short-circuit and draining the battery.

**6. Short-circuits through Soldering Irons**

Similar to solder bridging, when the circuit board wiring is short-circuited by a soldering iron for an extended period the battery is drained and consumed. Complete short-circuits through soldering irons within 5 seconds.

**7. Short-circuits through Piled Circuit Boards**

When circuit boards with the batteries are piled on top of one another, their conductive traces may touch and form a battery discharge circuit that consumes the battery's power.

---

#### 8 . Discharge through Conductive Electrostatic Prevention Mats

Conductive mats are widely used to prevent static electricity from destroying semiconductors. If a circuit board with mounted battery is put on a conductive mat, the soldered conductors may touch the mat, providing a discharge path for the battery.

#### 9 . Improper Battery Mounting Polarity

When the battery's positive (+) and negative (-) terminals are reversed with respect to the battery mounting's polarity marks, the battery may be discharged, depending on the type of electric circuit.

#### 10. Solder

When the battery lead plates are dipped in a molten solder bath, the battery is temporarily short-circuited. Therefore, complete dipping within 5 seconds.

### ■ Handling Precautions

Please read and observe the following precautions thoroughly.

Lithium Manganese Dioxide Battery contains flammable materials, such as organic solvent. Improper battery handling may cause leakage, heating, explosion or ignition of the battery, which may lead to injury or product failure.

### ■ PRECAUTIONS

1. Do not put the battery into microwave oven or drying machine.
2. Do not drop, apply excessive damage or deform the battery.
- 3 . Do not mix the used battery together with the new battery or different type of batteries.
4. Do not store the battery in high temperature and high humidity location and where the battery is exposed to sunlight to avoid performance deterioration, swelling or leakage, of the battery.