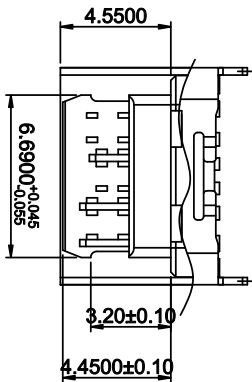
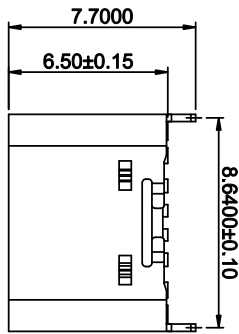
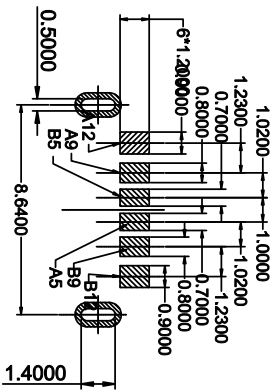
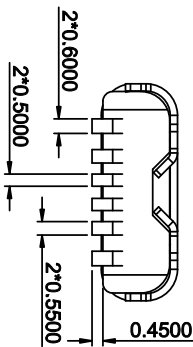
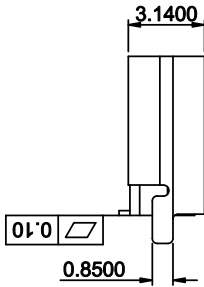
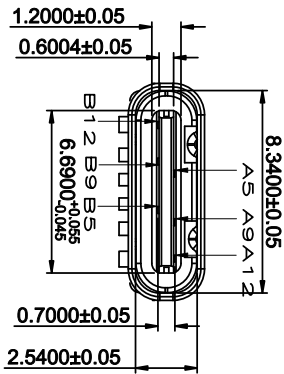


ROHS



B12	GND
B9	VBUS
B5	CC2
A5	CC1
A9	VBUS
A12	GND
PIN	SIGNAL NAME

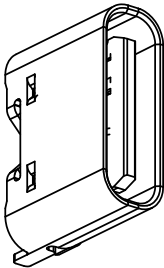
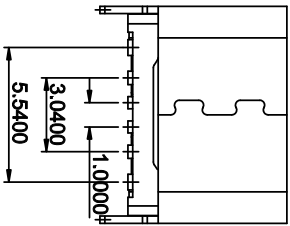


RECOMMENDED P.C.B. LAYOUT
TOLERANCE UNSPECIFIED ±0.05mm

TABLE 1:

NO.	PART NAME	QTY	MATERIAL	DESCRIPTION	REMARK
①	Shell	1	SUS 304	NI PLATING	T=0.30mm
②	MID PLATE	1	SUS 304		T=0.15mm
③	Terminal	16	C280	Au-1u" PLATING	T=0.15mm
④	Housing	3	LCF 1301		

- NOTES:
1. MATERIAL: SEE "TABLE 1";
 2. FINISH: SEE "TABLE 1";
 3. ELECTRICAL:
 - 3-1. CONTACT CURRENT RATING:
 - 3A (VBUS PIN 1, 5A/PIN MAX),
 - 3A (GND PIN 1, 25A/PIN MAX), 0.25A/PIN (OTHER PIN).
 - 3-2. INSULATION RESISTANCE:
 - 100 MEGOHMS MIN. AT 250VDC.
 - 3-3. DIELECTRIC WITHSTANDING VOLTAGE:
 - 100VAC MIN.
 - 3-4. LOW LEVEL CONTACT RESISTANCE:
 - INITIAL 40mΩ MAX.
 - AFTER 50mΩ MAX.
 4. MECHANICAL CHARACTERISTICS:
 - 4-1. MATING FORCE: 5~20N;
 - 4-2. UNMATING FORCE: 6~20N (INITIAL);
 - 4-3. OPERATING TEMPERATURE: -40° C TO +80° C



产品图
PRODUCT CHART DWG

公差一览表

TOLERANCE UNLESS OTHERWISE	公差	单位	MM
X	±0.25	X	±5.°
X	±0.20	X	±2.°
.XX	±0.15	.XX	±1.°
.XXX	±0.10	.XXX	±0.5°

RECOMMENDED P.C.B. LAYOUT
TOLERANCE UNSPECIFIED ±0.05mm

深圳市精拓金电子有限公司
Shenzhen Jing Tuo Jin Electronics Co., Ltd.

制图	林属升	制图料号	918-418K2028V40000
审核	郭治富	产品名称	TYPE-C3.1母座两脚立式插板6.5/7.7
核准	黄国荣	产品图号	不绣钢CP黑胶 6PIN母座
日期	2020-05-22	角法	版本
DATE		角法	AD