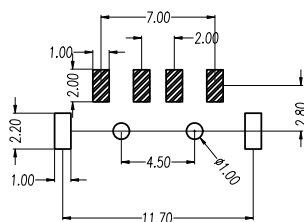
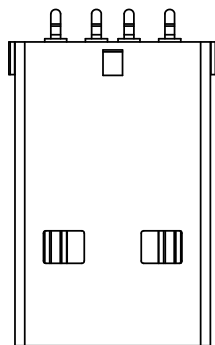
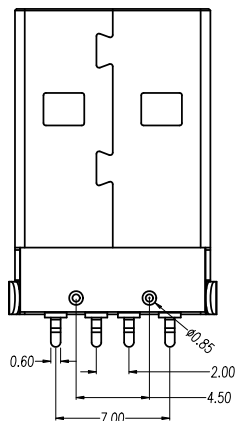
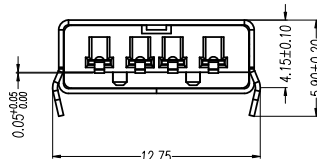
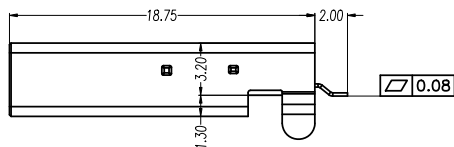
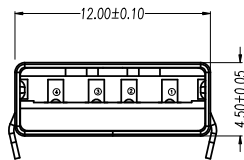


目錄 MAPX	設變內容 MODIFICATION	日期 DATE



RECOMMENDED P.C.B LAYOUT



电气特性:Electrical:

1. 额定电流: Current Rating
1.5A/contact terminal
2. 额定电压: Voltage Rating
30V DC
3. 接触阻抗: Contact Resistance
30 milliohms MAX
4. 耐电压: Dielectric Withstanding Voitage:
500 V AC AT Sea Level
5. 绝缘阻抗: Lnsulation Resistance:
1000MEGA ohms MIN

物理性能: Mechanical:

1. 插拔力: Cnector Mate and Unmate Force
Mate force: 3.57kgf (MAX)
Unmate force: 1.02kgf (MIN)
2. 端子保持力: Terminal Retenion
1.2kgf (MIN)
3. 寿命: 1500次

原材料: Matorial:

1. 塑胶: Housing: LCP BK
2. 端子: Contact: Copper Alloy C2680
3. 外壳: Shell: SPCC

电镀: Finish:

1. 端子 Contact: Au 0.7u" Plated on contact area
Tin50u" Plated on solder area
Nickel 50u" Plated underplating over all.
2. 外壳 Shell: Nickel 50u" Min plating over all.

Pin NUMBER		SIGNAL NAME	产品图 PRODUCT CHART DWG			深圳市精拓金电子有限公司						
1	VBUS		公差一览表 TOLERANCE UNLESS OTHERWISE			单位 UNITS	MM	制图 DRAWING	林属升	产品料号 PRODUCT PART NO.	917-P81A202ES60203	
2	D-		X.	±0.35	X'	±5'	比例 SCALE	1:1	审核 CHKD	郭志富	产品名称 PRODUCT NO.	
3	D+	.X	±0.30	.X'	±2'	AM SMT弯脚铁壳带柱LCP黑胶1U 24H						
4	GND	.XX	±0.25	.XX'	±1'	角法 VIEW					核准 APPD	黄国荣
您正在使用 ZWCAD 2022 个人版, 不得用于商业用途, 详情请咨询 4007-182-588.			日期 DATE			2015/10/20	核 APPD		角法 VIEW		版本 VER	