

Test Report

No.: SHAEC23001493003

Date: Feb 28, 2023

Page 1 of 16

Client Name: JCET SEMICONDUCTOR (CHUZHOU) CO.,LTD

Client Address: NO.999 SHIJI RD., NORTH INDUSTRIAL PARK, CHUZHOU, ANHUI CHINA

Sample Name: FBP1.0*0.6-2L GREEN PRODUCT

Client Ref. Information: Includin FBP1.0*0.6-3L; FBP1.6*0.8-2L; FBP1.0*1.0-4L; DFN0.6*0.3-2L;
DFN0.8*0.4-4L; DFN1.0*0.6-2L/3L; DFN1.1*1.0-3L;

The above sample(s) and information were provided by the client.

SGS Job No.: SP23-003535

Sample Receiving Date: Feb 20, 2023

Testing Period: Feb 20, 2023 ~ Feb 24, 2023

Test Requested: Select test(s) as requested by the client.

Test Method(s): Please refer to next page(s).

Test Result(s): Please refer to next page(s).

| Test Requirement | Conclusion |
|----------------------------------------------------------------------------------------------------------------------------------------------------------------------------------------------------------------------------------------------------------------------------------------------------------------------------|-------------|
| Element(s) | See Results |
| Halogen | See Results |
| Hexabromocyclododecane (HBCDD) | See Results |
| Phthalates | See Results |
| EU RoHS Directive (EU) 2015/863 amending Annex II to Directive 2011/65/EU- Lead, Mercury, Cadmium, Hexavalent chromium, Polybrominated biphenyls (PBBs), Polybrominated diphenyl ethers (PBDEs), Bis(2-ethylhexyl) phthalate (DEHP), Butyl benzyl phthalate (BBP), Dibutyl phthalate (DBP) and Diisobutyl phthalate (DIBP) | Pass |
| Perfluorooctanesulfonate (PFOS) and its derivatives and Perfluorooctanoic Acid (PFOA) | See Results |
| Polycyclic Aromatic Hydrocarbons (PAHs) | See Results |

Signed for and on behalf of
SGS-CSTC Standards Technical Services (Shanghai) Co., Ltd.

Jenny Lan

Jenny Lan

Approved Signatory

scan to see the report



99922551



Unless otherwise agreed in writing, this document is issued by the Company subject to its General Conditions of Service printed overleaf, available on request or accessible at <http://www.sgs.com/en/Terms-and-Conditions.aspx> and, for electronic format documents, subject to Terms and Conditions for Electronic Documents at <http://www.sgs.com/en/Terms-and-Conditions/Terms-e-Documents.aspx>. Attention is drawn to the limitation of liability, indemnification and jurisdiction issues defined therein. Any holder of this document is advised that information contained hereon reflects the Company's findings at the time of its intervention only and within the limits of Client's instructions, if any. The Company's sole responsibility is to its Client and this document does not exonerate parties to a transaction from exercising all their rights and obligations under the transaction documents. This document cannot be reproduced except in full, without prior written approval of the Company. Any unauthorized alteration, forgery or falsification of the content or appearance of this document is unlawful and offenders may be prosecuted to the fullest extent of the law. Unless otherwise stated the results shown in this test report refer only to the sample(s) tested.

Attention: To check the authenticity of testing /inspection report & certificate, please contact us at telephone: (86-755) 8307 1443, or email: CN.Doccheck@sgs.com

3rd Building, No. 889 Yishan Road Xuhui District, Shanghai China 200233 t E&E (86-21) 61402553 f E&E (86-21) 64953679 www.sgsgroup.com.cn
中国·上海·徐汇区宜山路889号3号楼 邮编: 200233 t HL (86-21) 61402594 f HL (86-21) 61156899 e sgs.china@sgs.com

Test Report

No.: SHAEC23001493003

Date: Feb 28, 2023

Page 2 of 16

Test Result(s):

Test Part Description:

| SN ID | Sample No. | SGS Sample ID | Description |
|-------|------------|-------------------------|-------------------------------|
| SN1 | A2 | SHA23-0014930-0001.C002 | Black body with silvery metal |

Remarks:

- (1) 1 mg/kg = 1 ppm = 0.0001%
- (2) MDL = Method Detection Limit
- (3) ND = Not Detected (< MDL)
- (4) “-” = Not Regulated

Element(s)

Test Method: With reference to US EPA 3052:1996, analysis was performed by ICP-OES.

| Test Item(s) | Unit(s) | MDL | A2 |
|---------------|---------|-----|-----|
| Phosphorus(P) | mg/kg | 20 | 134 |
| Antimony(Sb) | mg/kg | 10 | ND |

Halogen

Test Method: With reference to EN 14582:2016, analysis was performed by IC.

| Test Item(s) | Unit(s) | MDL | A2 |
|--------------|---------|-----|----|
| Fluorine(F) | mg/kg | 50 | ND |
| Chlorine(Cl) | mg/kg | 50 | ND |
| Bromine(Br) | mg/kg | 50 | ND |
| Iodine(I) | mg/kg | 50 | ND |

Hexabromocyclododecane (HBCDD)

Test Method: With reference to IEC 62321-9:2021, analysis was performed by GC-MS.

| Test Item(s) | CAS No. | Unit(s) | MDL | A2 |
|--------------------------------|--------------------------------------------------------------------------|---------|-----|----|
| Hexabromocyclododecane (HBCDD) | 134237-50-6 /134237-51-7 /134237-52-8 /25637-99-4 /3194-55-6 | mg/kg | 20 | ND |

Phthalates

Test Method: With reference to IEC 62321-8:2017, analysis was performed by GC-MS.

| Test Item(s) | Unit(s) | MDL | A2 |
|------------------------------------|---------|-----|----|
| Diisononyl Phthalate (DINP) | mg/kg | 50 | ND |
| Di-n-Octyl Phthalate(DNOP) | mg/kg | 50 | ND |
| Diisodecyl Phthalate (DIDP) | mg/kg | 50 | ND |
| Bis(2-methoxyethyl)phthalate(DMEP) | mg/kg | 50 | ND |
| Di-n-Hexyl Phthalate(DnHP) | mg/kg | 50 | ND |
| Dipentyl Phthalate | mg/kg | 50 | ND |

EU RoHS Directive (EU) 2015/863 amending Annex II to Directive 2011/65/EU- Lead, Mercury,

Cadmium, Hexavalent chromium, Polybrominated biphenyls (PBBs), Polybrominated diphenyl ethers



Unless otherwise agreed in writing, this document is issued by the Company subject to its General Conditions of Service printed overleaf, available on request or accessible at <http://www.sgs.com/en/Terms-and-Conditions.aspx> and, for electronic format documents, subject to Terms and Conditions for Electronic Documents at <http://www.sgs.com/en/Terms-and-Conditions/Terms-e-Documents.aspx>. Attention is drawn to the limitation of liability, indemnification and jurisdiction issues defined therein. Any holder of this document is advised that information contained hereon reflects the Company's findings at the time of its intervention only and within the limits of Client's instructions, if any. The Company's sole responsibility is to its Client and this document does not exonerate parties to a transaction from exercising all their rights and obligations under the transaction documents. This document cannot be reproduced except in full, without prior written approval of the Company. Any unauthorized alteration, forgery or falsification of the content or appearance of this document is unlawful and offenders may be prosecuted to the fullest extent of the law. Unless otherwise stated the results shown in this test report refer only to the sample(s) tested.

Attention: To check the authenticity of testing/inspection report & certificate, please contact us at telephone: (86-755) 8307 1443, or email: CN.Doccheck@sgs.com

SGS-CSTC (Shanghai) Technical Services (Shanghai) Co., Ltd.
Testing Center-Chemical Laboratory

3rd Building, No.889 Yishan Road Xuhui District, Shanghai China 200233 t E&E (86-21) 61402553 f E&E (86-21) 64953679 www.sgsgroup.com.cn
中国·上海·徐汇区宜山路889号3号楼 邮编: 200233 t HL (86-21) 61402594 f HL (86-21) 61156899 e sgs.china@sgs.com

Test Report

No.: SHAEC23001493003

Date: Feb 28, 2023

Page 3 of 16

(PBDEs), Bis(2-ethylhexyl) phthalate (DEHP), Butyl benzyl phthalate (BBP), Dibutyl phthalate (DBP) and Diisobutyl phthalate (DIBP)

Test Method: With reference to IEC 62321-4:2013+AMD1:2017, IEC 62321-5:2013, IEC 62321-7-2:2017, IEC 62321-6:2015 and IEC 62321-8:2017, analysis was performed by ICP-OES, AAS, UV-Vis and GC-MS.

| Test Item(s) | Limit | Unit(s) | MDL | A2 |
|------------------------------------|-------|---------|-----|----|
| Cadmium(Cd) | 100 | mg/kg | 2 | ND |
| Lead (Pb) | 1000 | mg/kg | 2 | ND |
| Mercury (Hg) | 1000 | mg/kg | 2 | ND |
| Hexavalent Chromium (Cr(VI)) | 1000 | mg/kg | 8 | ND |
| Polybromobiphenyl (PBBs) | 1000 | mg/kg | - | ND |
| Monobromobiphenyl (MonoBB) | - | mg/kg | 5 | ND |
| Dibromobiphenyl (DiBB) | - | mg/kg | 5 | ND |
| Tribromobiphenyl (TriBB) | - | mg/kg | 5 | ND |
| Tetrabromobiphenyl (TetraBB) | - | mg/kg | 5 | ND |
| Pentabromobiphenyl (PentaBB) | - | mg/kg | 5 | ND |
| Hexabromobiphenyl (HexaBB) | - | mg/kg | 5 | ND |
| Heptabromobiphenyl (HeptaBB) | - | mg/kg | 5 | ND |
| Octabromobiphenyl (OctaBB) | - | mg/kg | 5 | ND |
| Nonabromobiphenyl (NonaBB) | - | mg/kg | 5 | ND |
| Decabromobiphenyl (DecaBB) | - | mg/kg | 5 | ND |
| Polybromodiphenyl ether(PBDEs) | 1000 | mg/kg | - | ND |
| Monobromodiphenylether (MonoBDE) | - | mg/kg | 5 | ND |
| Dibromodiphenylether (DiBDE) | - | mg/kg | 5 | ND |
| Tribromodiphenylether (TriBDE) | - | mg/kg | 5 | ND |
| Tetrabromodiphenylether (TetraBDE) | - | mg/kg | 5 | ND |
| Pentabromodiphenylether (PentaBDE) | - | mg/kg | 5 | ND |
| Hexabromodiphenylether (HexaBDE) | - | mg/kg | 5 | ND |
| Heptabromodiphenylether (HeptaBDE) | - | mg/kg | 5 | ND |
| Octabromodiphenylether (OctaBDE) | - | mg/kg | 5 | ND |
| Nonabromodiphenylether (NonaBDE) | - | mg/kg | 5 | ND |
| Decabromodiphenylether (DecaBDE) | - | mg/kg | 5 | ND |
| Dibutyl Phthalate(DBP) | 1000 | mg/kg | 50 | ND |
| Benzyl Butyl Phthalate(BBP) | 1000 | mg/kg | 50 | ND |
| Bis-(2-ethylhexyl) Phthalate(DEHP) | 1000 | mg/kg | 50 | ND |
| Diisobutyl Phthalate(DIBP) | 1000 | mg/kg | 50 | ND |

Notes:

- (1) The maximum permissible limit is quoted from RoHS Directive (EU) 2015/863.
- (2) IEC 62321 series is equivalent to EN 62321 series.
- (3) The restriction of DEHP, BBP, DBP and DIBP shall apply to medical devices, including in vitro medical devices, and monitoring and control instruments, including industrial monitoring and control instruments, from 22 July 2021.

Perfluorooctanesulfonate (PFOS) and its derivatives and Perfluorooctanoic Acid (PFOA)

Test Method: With reference to CEN/TS 15968:2010, analysis was performed by HPLC-MS or LC-MS/MS.



Unless otherwise agreed in writing, this document is issued by the Company subject to its General Conditions of Service printed overleaf, available on request or accessible at <http://www.sgs.com/en/Terms-and-Conditions.aspx> and, for electronic format documents, subject to Terms and Conditions for Electronic Documents at <http://www.sgs.com/en/Terms-and-Conditions/Terms-e-Documents.aspx>. Attention is drawn to the limitation of liability, indemnification and jurisdiction issues defined therein. Any holder of this document is advised that information contained hereon reflects the Company's findings at the time of its intervention only and within the limits of Client's instructions, if any. The Company's sole responsibility is to its Client and this document does not exonerate parties to a transaction from exercising all their rights and obligations under the transaction documents. This document cannot be reproduced except in full, without prior written approval of the Company. Any unauthorized alteration, forgery or falsification of the content or appearance of this document is unlawful and offenders may be prosecuted to the fullest extent of the law. Unless otherwise stated the results shown in this test report refer only to the sample(s) tested.

Attention: To check the authenticity of testing/inspection report & certificate, please contact us at telephone: (86-755) 8307 1443, or email: CN.Doccheck@sgs.com

3rd Building, No. 889 Yishan Road Xuhui District, Shanghai China 200233 t E&E (86-21) 61402553 f E&E (86-21) 64953679 www.sgsgroup.com.cn
中国·上海·徐汇区宜山路889号3号楼 邮编: 200233 t HL (86-21) 61402594 f HL (86-21) 61156899 e sgs.china@sgs.com

Test Report

No.: SHAEC23001493003

Date: Feb 28, 2023

Page 4 of 16

| Test Item(s) | CAS No. | Unit(s) | MDL | A2 |
|-------------------------------------------------------------|------------|---------|------|----|
| PFOS and Its Derivatives | - | mg/kg | - | ND |
| Perfluorooctanesulfonic acid (PFOS) [^] | 1763-23-1 | mg/kg | 0.01 | ND |
| N-ethylperfluoro-1-octanesulfonamide (N-Et-FOSA) | 4151-50-2 | mg/kg | 0.01 | ND |
| N-methylperfluoro-1-octanesulfonamide (MeFOSA) | 31506-32-8 | mg/kg | 0.01 | ND |
| 2-(N-ethylperfluoro-1-octanesulfonamido)-ethanol (EtFOSE) | 1691-99-2 | mg/kg | 0.01 | ND |
| 2-(N-methylperfluoro-1-octanesulfonamido)- ethanol (MeFOSE) | 24448-09-7 | mg/kg | 0.01 | ND |
| Perfluorooctane Sulfonamide (PFOSA) | 754-91-6 | mg/kg | 0.01 | ND |
| Perfluorooctanoic Acid (PFOA) and its salts+ | 335-67-1 | mg/kg | 0.01 | ND |

Notes:

(1) + PFOA refer to its salts including PFOA-Na (CAS No.: 335-95-5), PFOA-K (CAS No.: 2395-00-8), PFOA-Ag (CAS No.: 335-93-3), PFOA-F (CAS No.: 335-66-0) and APFO (CAS No.: 3825-26-1);
 (2) ^ PFOS including PFOS-K (CAS No.: 2795-39-3), PFOS-Li (CAS No.: 29457-72-5), PFOS-NH₄ (CAS No.: 29081-56-9), PFOS-NH(OH)₂ (CAS No.: 70225-14-8), PFOS-N(C₂H₅)₄ (CAS No.: 56773-42-3), PFOS-DDA (CAS No.: 251099-16-8) and POSF (CAS No.: 307-35-7).

Polycyclic Aromatic Hydrocarbons (PAHs)

Test Method: With reference to AfPS GS 2019:01 PAK, analysis was performed by GC-MS.

| Test Item(s) | CAS No. | Unit(s) | MDL | A2 |
|---------------------------------------------------------------------------|----------|---------|-----|----|
| Benzo(a)pyrene(BaP) | 50-32-8 | mg/kg | 0.1 | ND |
| Benzo(e)pyrene(BeP) | 192-97-2 | mg/kg | 0.1 | ND |
| Benzo(a)anthracene(BaA) | 56-55-3 | mg/kg | 0.1 | ND |
| Benzo(b)Fluoranthene(BbF) | 205-99-2 | mg/kg | 0.1 | ND |
| Benzo(j)fluoranthene(BjF) | 205-82-3 | mg/kg | 0.1 | ND |
| Benzo(k)Fluoranthene(BkF) | 207-08-9 | mg/kg | 0.1 | ND |
| Chrysene(CHR) | 218-01-9 | mg/kg | 0.1 | ND |
| Dibenzo(a,h)Anthracene(DBA) | 53-70-3 | mg/kg | 0.1 | ND |
| Benzo(g,h,i)perylene(BPE) | 191-24-2 | mg/kg | 0.1 | ND |
| Indeno(1,2,3-c,d)pyrene(IPY) | 193-39-5 | mg/kg | 0.1 | ND |
| Phenanthrene(PHE) | 85-01-8 | mg/kg | 0.1 | ND |
| Pyrene(PYR) | 129-00-0 | mg/kg | 0.1 | ND |
| Anthracene(ANT) | 120-12-7 | mg/kg | 0.1 | ND |
| Fluoranthene(FLT) | 206-44-0 | mg/kg | 0.1 | ND |
| Sum of Phenanthrene(PHE), Pyrene(PYR), Anthracene(ANT), Fluoranthene(FLT) | - | mg/kg | - | ND |
| Naphthalene(NAP) | 91-20-3 | mg/kg | 0.1 | ND |
| Sum of 15 PAHs | - | mg/kg | - | ND |
| Material Category | - | - | - | - |

Notes:

AfPS (German commission for Product Safety) : PAHs requirements

| Parameter | Category 1 | Category 2 | Category 3 |
|-----------|------------|------------|------------|
|-----------|------------|------------|------------|



Unless otherwise agreed in writing, this document is issued by the Company subject to its General Conditions of Service printed overleaf, available on request or accessible at <http://www.sgs.com/en/Terms-and-Conditions.aspx> and, for electronic format documents, subject to Terms and Conditions for Electronic Documents at <http://www.sgs.com/en/Terms-and-Conditions/Terms-e-Documents.aspx>. Attention is drawn to the limitation of liability, indemnification and jurisdiction issues defined therein. Any holder of this document is advised that information contained hereon reflects the Company's findings at the time of its intervention only and within the limits of Client's instructions, if any. The Company's sole responsibility is to its Client and this document does not exonerate parties to a transaction from exercising all their rights and obligations under the transaction documents. This document cannot be reproduced except in full, without prior written approval of the Company. Any unauthorized alteration, forgery or falsification of the content or appearance of this document is unlawful and offenders may be prosecuted to the fullest extent of the law. Unless otherwise stated the results shown in this test report refer only to the sample(s) tested.

Attention: To check the authenticity of testing / inspection report & certificate, please contact us at telephone: (86-755) 8307 1443, or email: CN.Doccheck@sgs.com

3rd Building, No. 889 Yishan Road Xuhui District, Shanghai China 200233 t E&E (86-21) 61402553 f E&E (86-21) 64953679 www.sgsgroup.com.cn
 中国·上海·徐汇区宜山路889号3号楼 邮编: 200233 t HL (86-21) 61402594 f HL (86-21) 61156899 e sgs.china@sgs.com

Test Report

No.: SHAEC23001493003

Date: Feb 28, 2023

Page 5 of 16

| | Materials intended to be placed in the mouth, or materials coming into long-term contact with skin (more than 30s) during the intended use -in toys according to Directive 2009/48/EC or -for the use by children ^{a,b} up to 3 years of age. | Materials not covered by category 1, coming into long-term contact (more than 30s) or short-term repetitive contact ^c with skin during the intended or foreseeable use ^d . | | Materials covered neither by category 1 nor by category 2, coming into short-term contact (up to 30s) with skin during the intended or foreseeable use. | |
|-------------------------------------------------------------------------------|--------------------------------------------------------------------------------------------------------------------------------------------------------------------------------------------------------------------------------------------------------------|--------------------------------------------------------------------------------------------------------------------------------------------------------------------------------------------------|-------------------------------|---------------------------------------------------------------------------------------------------------------------------------------------------------|-------------------------------|
| | | a. use by children | b. other consumer products | a. use by children | b. other consumer products |
| Benzo(a)pyrene (BaP) mg/kg | < 0.2 | < 0.2 | < 0.5 | < 0.5 | < 1 |
| Benzo(e)pyrene (BeP) mg/kg | < 0.2 | < 0.2 | < 0.5 | < 0.5 | < 1 |
| Benzo(a)anthracene (BaA) mg/kg | < 0.2 | < 0.2 | < 0.5 | < 0.5 | < 1 |
| Benzo(b)fluoranthene (BbF) mg/kg | < 0.2 | < 0.2 | < 0.5 | < 0.5 | < 1 |
| Benzo(j)fluoranthene (BjF) mg/kg | < 0.2 | < 0.2 | < 0.5 | < 0.5 | < 1 |
| Benzo(k)fluoranthene (BkF) mg/kg | < 0.2 | < 0.2 | < 0.5 | < 0.5 | < 1 |
| Chrysene (CHR) mg/kg | < 0.2 | < 0.2 | < 0.5 | < 0.5 | < 1 |
| Dibenzo(a,h)anthracene (DBA) mg/kg | < 0.2 | < 0.2 | < 0.5 | < 0.5 | < 1 |
| Benzo(g,h,i)perylene (BPE) mg/kg | < 0.2 | < 0.2 | < 0.5 | < 0.5 | < 1 |
| Indeno(1,2,3-cd)pyrene (IPY) mg/kg | < 0.2 | < 0.2 | < 0.5 | < 0.5 | < 1 |
| Phenanthrene (PHE), pyrene (PYR), anthracene (ANT), fluoranthene (FLT), mg/kg | < 1 Sum | < 5 Sum | < 10 Sum | < 20 Sum | < 50 Sum |



Unless otherwise agreed in writing, this document is issued by the Company subject to its General Conditions of Service printed overleaf, available on request or accessible at <http://www.sgs.com/en/Terms-and-Conditions.aspx> and, for electronic format documents, subject to Terms and Conditions for Electronic Documents at <http://www.sgs.com/en/Terms-and-Conditions/Terms-e-Documents.aspx>. Attention is drawn to the limitation of liability, indemnification and jurisdiction issues defined therein. Any holder of this document is advised that information contained hereon reflects the Company's findings at the time of its intervention only and within the limits of Client's instructions, if any. The Company's sole responsibility is to its Client and this document does not exonerate parties to a transaction from exercising all their rights and obligations under the transaction documents. This document cannot be reproduced except in full, without prior written approval of the Company. Any unauthorized alteration, forgery or falsification of the content or appearance of this document is unlawful and offenders may be prosecuted to the fullest extent of the law. Unless otherwise stated the results shown in this test report refer only to the sample(s) tested.

Attention: To check the authenticity of testing / inspection report & certificate, please contact us at telephone: (86-755) 8307 1443, or email: CN.Doccheck@sgs.com

SGS-CSTC (Shanghai) Technical Services (Shanghai) Co., Ltd.
Testing Center-Chemical Laboratory

3rd Building, No. 889 Yishan Road Xuhui District, Shanghai China 200233
中国·上海·徐汇区宜山路889号3号楼 邮编: 200233

t E&E (86-21) 61402553 f E&E (86-21) 64953679 www.sgsgroup.com.cn
t HL (86-21) 61402594 f HL (86-21) 61156899 e sgs.china@sgs.com

Test Report

No.: SHAEC23001493003

Date: Feb 28, 2023

Page 6 of 16

| | | | |
|----------------------------|------|------|------|
| Naphthalene (NAP) mg/kg | < 1 | < 2 | < 10 |
| Sum of 15 PAHs | <1 | < 5 | < 10 |
| | < 20 | < 50 | |

Notes:

^a A "Child" is legally defined as a person before reaching the age of 14 years.

^b Use by children includes both active and passive contact by children.

^c Definition "short-term repetitive contact" taken from REACH Annex XVII entry 50 amendment (Regulation (EC) No.1272/2013)

^d According to the definition of the German Product Safety Act (ProdSG) (chapter 1 Article 2 No. 28)

"foreseeable use" shall mean the use of a product in a manner that the person placing it on the market, has not intended, but which could be reasonably foreseeable.

Remark:

The German committee on Product Safety (AfPS) published a new PAHs document (AfPS GS 2019:01 PAK) on April 10, 2020, which will be binding for the issue of GS mark certificate from July 1, 2020.

Unless otherwise stated, the decision rule for conformity reporting is based on Binary Statement for Simple Acceptance Rule ($w=0$) stated in ILAC-G8:09/2019.



Unless otherwise agreed in writing, this document is issued by the Company subject to its General Conditions of Service printed overleaf, available on request or accessible at <http://www.sgs.com/en/Terms-and-Conditions.aspx> and, for electronic format documents, subject to Terms and Conditions for Electronic Documents at <http://www.sgs.com/en/Terms-and-Conditions/Terms-e-Documents.aspx>. Attention is drawn to the limitation of liability, indemnification and jurisdiction issues defined therein. Any holder of this document is advised that information contained hereon reflects the Company's findings at the time of its intervention only and within the limits of Client's instructions, if any. The Company's sole responsibility is to its Client and this document does not exonerate parties to a transaction from exercising all their rights and obligations under the transaction documents. This document cannot be reproduced except in full, without prior written approval of the Company. Any unauthorized alteration, forgery or falsification of the content or appearance of this document is unlawful and offenders may be prosecuted to the fullest extent of the law. Unless otherwise stated the results shown in this test report refer only to the sample(s) tested.

Attention: To check the authenticity of testing/inspection report & certificate, please contact us at telephone: (86-755) 8307 1443, or email: CN.Doccheck@sgs.com

SGS-CSTC (Shanghai) Co., Ltd.
Testing Center-Chemical Laboratory

3rd Building, No. 889 Yishan Road Xuhui District, Shanghai China 200233 t E&E (86-21) 61402553 f E&E (86-21) 64953679 www.sgsgroup.com.cn
中国·上海·徐汇区宜山路889号3号楼 邮编: 200233 t HL (86-21) 61402594 f HL (86-21) 61156899 e sgs.china@sgs.com

Test Report

No.: SHAEC23001493003

Date: Feb 28, 2023

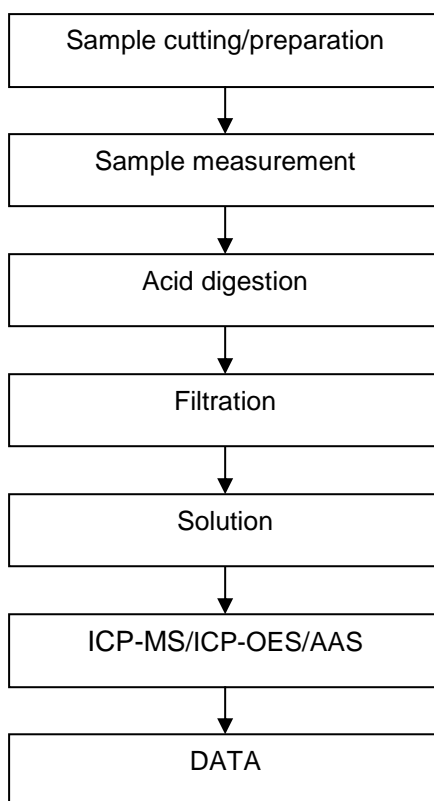
Page 7 of 16

ATTACHMENTS

Elements Testing Flow Chart

Name of the person who made testing: Meria Jin/Sielina Song

Name of the person in charge of testing: Luna Xu/Bob Zhang



SGS CSTC (Shanghai) Co., Ltd.
Testing Center-Chemical Laboratory

Unless otherwise agreed in writing, this document is issued by the Company subject to its General Conditions of Service printed overleaf, available on request or accessible at <http://www.sgs.com/en/Terms-and-Conditions.aspx> and, for electronic format documents, subject to Terms and Conditions for Electronic Documents at <http://www.sgs.com/en/Terms-and-Conditions/Terms-e-Document.aspx>. Attention is drawn to the limitation of liability, indemnification and jurisdiction issues defined therein. Any holder of this document is advised that information contained hereon reflects the Company's findings at the time of its intervention only and within the limits of Client's instructions, if any. The Company's sole responsibility is to its Client and this document does not exonerate parties to a transaction from exercising all their rights and obligations under the transaction documents. This document cannot be reproduced except in full, without prior written approval of the Company. Any unauthorized alteration, forgery or falsification of the content or appearance of this document is unlawful and offenders may be prosecuted to the fullest extent of the law. Unless otherwise stated the results shown in this test report refer only to the sample(s) tested.

Attention: To check the authenticity of testing / inspection report & certificate, please contact us at telephone: (86-755) 8307 1443, or email: CN.Doccheck@sgs.com

3rd Building, No. 889 Yishan Road Xuhui District, Shanghai China 200233 t E&E (86-21) 61402553 f E&E (86-21) 64953679 www.sgsgroup.com.cn
中国·上海·徐汇区宜山路889号3号楼 邮编: 200233 t HL (86-21) 61402594 f HL (86-21) 61156899 e sgs.china@sgs.com

Test Report

No.: SHAEC23001493003

Date: Feb 28, 2023

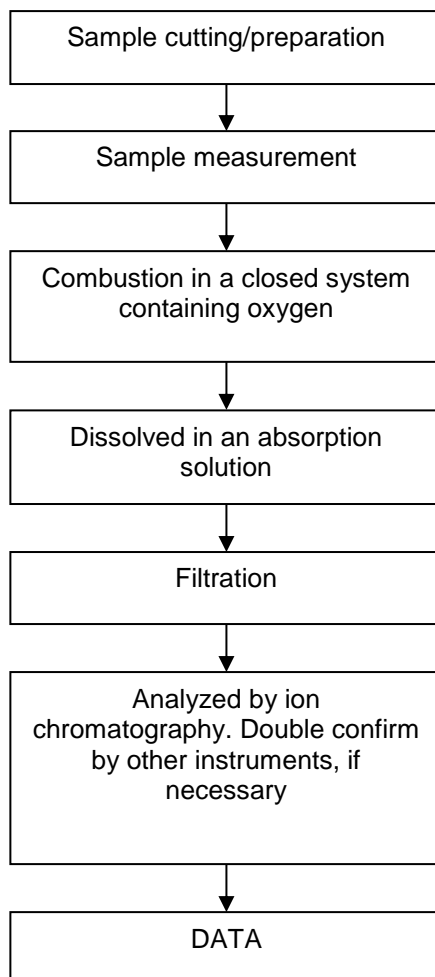
Page 8 of 16

ATTACHMENTS

Halogen Testing Flow Chart

Name of the person who made testing: Andy Zhang

Name of the person in charge of testing: Allen Chen



Unless otherwise agreed in writing, this document is issued by the Company subject to its General Conditions of Service printed overleaf, available on request or accessible at <http://www.sgs.com/en/Terms-and-Conditions.aspx> and, for electronic format documents, subject to Terms and Conditions for Electronic Documents at <http://www.sgs.com/en/Terms-and-Conditions/Terms-e-Documents.aspx>. Attention is drawn to the limitation of liability, indemnification and jurisdiction issues defined therein. Any holder of this document is advised that information contained hereon reflects the Company's findings at the time of its intervention only and within the limits of Client's instructions, if any. The Company's sole responsibility is to its Client and this document does not exonerate parties to a transaction from exercising all their rights and obligations under the transaction documents. This document cannot be reproduced except in full, without prior written approval of the Company. Any unauthorized alteration, forgery or falsification of the content or appearance of this document is unlawful and offenders may be prosecuted to the fullest extent of the law. Unless otherwise stated the results shown in this test report refer only to the sample(s) tested.

Attention: To check the authenticity of testing/inspection report & certificate, please contact us at telephone: (86-755) 8307 1443, or email: CN.Doccheck@sgs.com

SGS-CSTC (Shanghai) Co., Ltd.
Testing Center-Chemical Laboratory

3rd Building, No. 889 Yishan Road Xuhui District, Shanghai China 200233
中国·上海·徐汇区宜山路889号3号楼 邮编: 200233

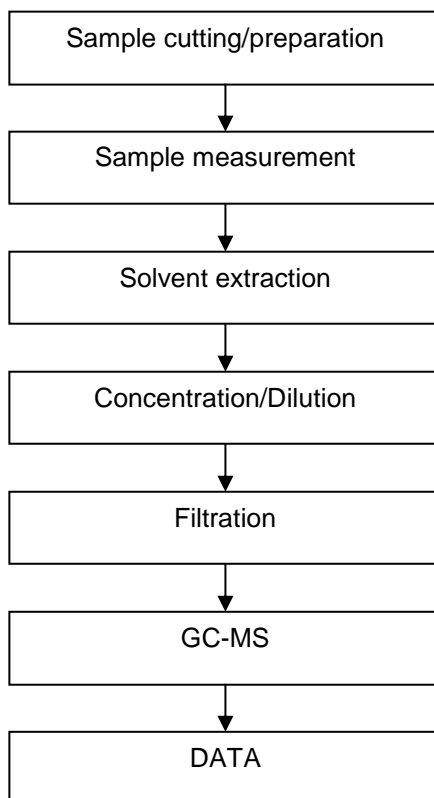
t E&E (86-21) 61402553 f E&E (86-21) 64953679 www.sgsgroup.com.cn
t HL (86-21) 61402594 f HL (86-21) 61156899 e sgs.china@sgs.com

ATTACHMENTS

HBCDD Testing Flow Chart

Name of the person who made testing: Gary Xu

Name of the person in charge of testing: Jason Zhang



Unless otherwise agreed in writing, this document is issued by the Company subject to its General Conditions of Service printed overleaf, available on request or accessible at <http://www.sgs.com/en/Terms-and-Conditions.aspx> and, for electronic format documents, subject to Terms and Conditions for Electronic Documents at <http://www.sgs.com/en/Terms-and-Conditions/Terms-e-Documents.aspx>. Attention is drawn to the limitation of liability, indemnification and jurisdiction issues defined therein. Any holder of this document is advised that information contained hereon reflects the Company's findings at the time of its intervention only and within the limits of Client's instructions, if any. The Company's sole responsibility is to its Client and this document does not exonerate parties to a transaction from exercising all their rights and obligations under the transaction documents. This document cannot be reproduced except in full, without prior written approval of the Company. Any unauthorized alteration, forgery or falsification of the content or appearance of this document is unlawful and offenders may be prosecuted to the fullest extent of the law. Unless otherwise stated the results shown in this test report refer only to the sample(s) tested.

Attention: To check the authenticity of testing / inspection report & certificate, please contact us at telephone: (86-755) 8307 1443, or email: CN.Doccheck@sgs.com

SGS-CSTC (Shanghai) Co., Ltd.
Testing Center-Chemical Laboratory

3rd Building, No. 889 Yishan Road Xuhui District, Shanghai China 200233
中国·上海·徐汇区宜山路889号3号楼 邮编: 200233

t E&E (86-21) 61402553 f E&E (86-21) 64953679 www.sgsgroup.com.cn
t HL (86-21) 61402594 f HL (86-21) 61156899 e sgs.china@sgs.com

Test Report

No.: SHAEC23001493003

Date: Feb 28, 2023

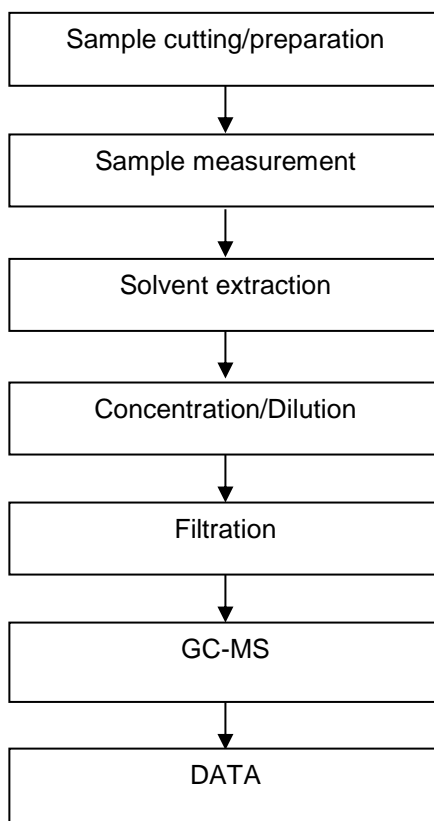
Page 10 of 16

ATTACHMENTS

Phthalates Testing Flow Chart

Name of the person who made testing: Iris Han

Name of the person in charge of testing: Jason Zhang



Unless otherwise agreed in writing, this document is issued by the Company subject to its General Conditions of Service printed overleaf, available on request or accessible at <http://www.sgs.com/en/Terms-and-Conditions.aspx> and, for electronic format documents, subject to Terms and Conditions for Electronic Documents at <http://www.sgs.com/en/Terms-and-Conditions/Terms-e-Documents.aspx>. Attention is drawn to the limitation of liability, indemnification and jurisdiction issues defined therein. Any holder of this document is advised that information contained hereon reflects the Company's findings at the time of its intervention only and within the limits of Client's instructions, if any. The Company's sole responsibility is to its Client and this document does not exonerate parties to a transaction from exercising all their rights and obligations under the transaction documents. This document cannot be reproduced except in full, without prior written approval of the Company. Any unauthorized alteration, forgery or falsification of the content or appearance of this document is unlawful and offenders may be prosecuted to the fullest extent of the law. Unless otherwise stated the results shown in this test report refer only to the sample(s) tested.

Attention: To check the authenticity of testing / inspection report & certificate, please contact us at telephone: (86-755) 8307 1443, or email: CN.Doccheck@sgs.com

SGS-CSTC Standards Technical Services (Shanghai) Co., Ltd.
Testing Center-Chemical Laboratory

3rd Building, No. 889 Yishan Road Xuhui District, Shanghai China 200233
中国·上海·徐汇区宜山路889号3号楼 邮编: 200233

t E&E (86-21) 61402553 f E&E (86-21) 64953679 www.sgsgroup.com.cn
t HL (86-21) 61402594 f HL (86-21) 61156899 e sgs.china@sgs.com

Test Report

No.: SHAEC23001493003

Date: Feb 28, 2023

Page 11 of 16

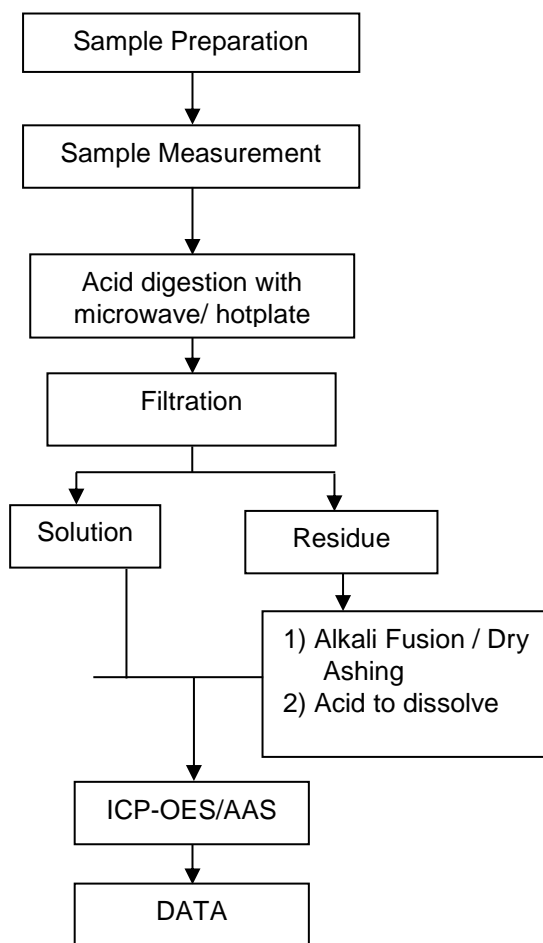
ATTACHMENTS

Elements (IEC62321) Testing Flow Chart

Name of the person who made testing: Meria Jin/Sielina Song

Name of the person in charge of testing: Luna Xu/Bob Zhang

These samples were dissolved totally by pre-conditioning method according to below flow chart.



Unless otherwise agreed in writing, this document is issued by the Company subject to its General Conditions of Service printed overleaf, available on request or accessible at <http://www.sgs.com/en/Terms-and-Conditions.aspx> and, for electronic format documents, subject to Terms and Conditions for Electronic Documents at <http://www.sgs.com/en/Terms-and-Conditions/Terms-e-Documents.aspx>. Attention is drawn to the limitation of liability, indemnification and jurisdiction issues defined therein. Any holder of this document is advised that information contained hereon reflects the Company's findings at the time of its intervention only and within the limits of Client's instructions, if any. The Company's sole responsibility is to its Client and this document does not exonerate parties to a transaction from exercising all their rights and obligations under the transaction documents. This document cannot be reproduced except in full, without prior written approval of the Company. Any unauthorized alteration, forgery or falsification of the content or appearance of this document is unlawful and offenders may be prosecuted to the fullest extent of the law. Unless otherwise stated the results shown in this test report refer only to the sample(s) tested.

Attention: To check the authenticity of testing / inspection report & certificate, please contact us at telephone: (86-755) 8307 1443, or email: CN.Doccheck@sgs.com

SGS-CSTC (Shanghai) Technical Services Co., Ltd.
Testing Center-Chemical Laboratory

3rd Building, No. 889 Yishan Road Xuhui District, Shanghai China 200233
中国·上海·徐汇区宜山路889号3号楼 邮编: 200233

t E&E (86-21) 61402553 f E&E (86-21) 64953679 www.sgsgroup.com.cn
t HL (86-21) 61402594 f HL (86-21) 61156899 e sgs.china@sgs.com

Test Report

No.: SHAEC23001493003

Date: Feb 28, 2023

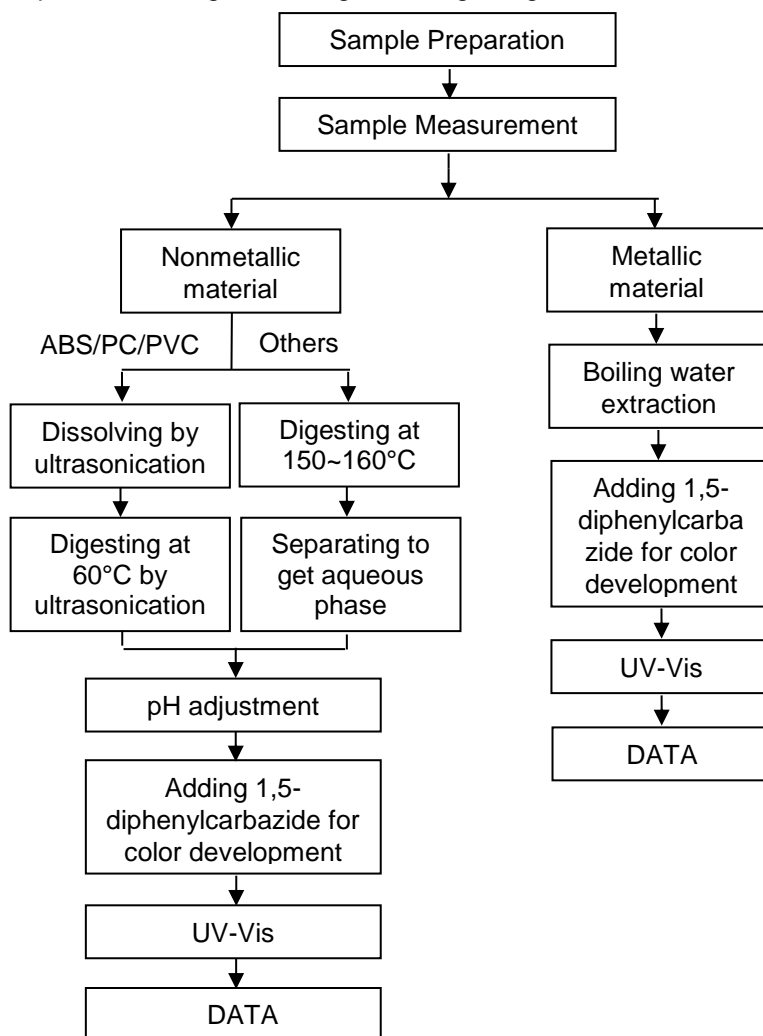
Page 12 of 16

ATTACHMENTS

Hexavalent Chromium (Cr(VI)) Testing Flow Chart

Name of the person who made testing: Alex Wang

Name of the person in charge of testing: Xiaolong Yang



Unless otherwise agreed in writing, this document is issued by the Company subject to its General Conditions of Service printed overleaf, available on request or accessible at <http://www.sgs.com/en/Terms-and-Conditions.aspx> and, for electronic format documents, subject to Terms and Conditions for Electronic Documents at <http://www.sgs.com/en/Terms-and-Conditions/Terms-e-Documents.aspx>. Attention is drawn to the limitation of liability, indemnification and jurisdiction issues defined therein. Any holder of this document is advised that information contained hereon reflects the Company's findings at the time of its intervention only and within the limits of Client's instructions, if any. The Company's sole responsibility is to its Client and this document does not exonerate parties to a transaction from exercising all their rights and obligations under the transaction documents. This document cannot be reproduced except in full, without prior written approval of the Company. Any unauthorized alteration, forgery or falsification of the content or appearance of this document is unlawful and offenders may be prosecuted to the fullest extent of the law. Unless otherwise stated the results shown in this test report refer only to the sample(s) tested.

Attention: To check the authenticity of testing/inspection report & certificate, please contact us at telephone: (86-755) 8307 1443, or email: CN.Doccheck@sgs.com

SGS-CSTC (Shanghai) Inspection & Testing Services Co., Ltd.
Testing Center-Chemical Laboratory

3rd Building, No. 889 Yishan Road Xuhui District, Shanghai China 200233
中国·上海·徐汇区宜山路889号3号楼 邮编: 200233

t E&E (86-21) 61402553 f E&E (86-21) 64953679 www.sgsgroup.com.cn
t HL (86-21) 61402594 f HL (86-21) 61156899 e sgs.china@sgs.com

Test Report

No.: SHAEC23001493003

Date: Feb 28, 2023

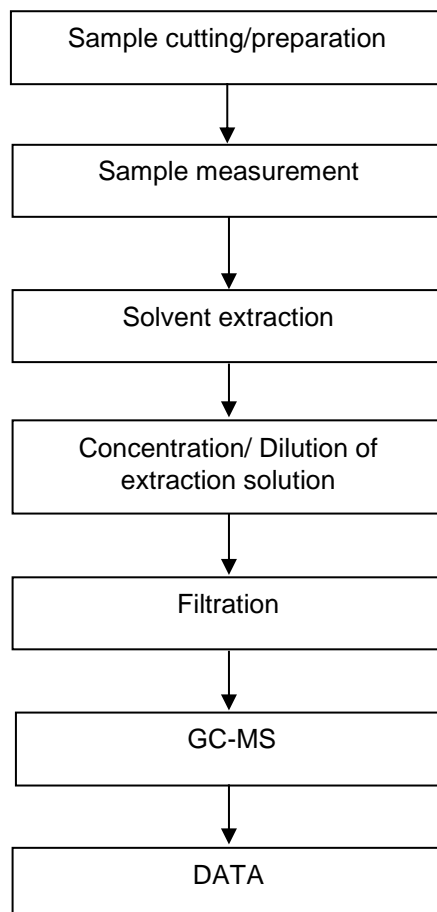
Page 13 of 16

ATTACHMENTS

PBBs/PBDEs Testing Flow Chart

Name of the person who made testing: Gary Xu

Name of the person in charge of testing: Jason Zhang



Unless otherwise agreed in writing, this document is issued by the Company subject to its General Conditions of Service printed overleaf, available on request or accessible at <http://www.sgs.com/en/Terms-and-Conditions.aspx> and, for electronic format documents, subject to Terms and Conditions for Electronic Documents at <http://www.sgs.com/en/Terms-and-Conditions/Terms-e-Documents.aspx>. Attention is drawn to the limitation of liability, indemnification and jurisdiction issues defined therein. Any holder of this document is advised that information contained hereon reflects the Company's findings at the time of its intervention only and within the limits of Client's instructions, if any. The Company's sole responsibility is to its Client and this document does not exonerate parties to a transaction from exercising all their rights and obligations under the transaction documents. This document cannot be reproduced except in full, without prior written approval of the Company. Any unauthorized alteration, forgery or falsification of the content or appearance of this document is unlawful and offenders may be prosecuted to the fullest extent of the law. Unless otherwise stated the results shown in this test report refer only to the sample(s) tested.

Attention: To check the authenticity of testing / inspection report & certificate, please contact us at telephone: (86-755) 8307 1443, or email: CN.Doccheck@sgs.com

SGS-CSTC (Shanghai) Co., Ltd.
Testing Center-Chemical Laboratory

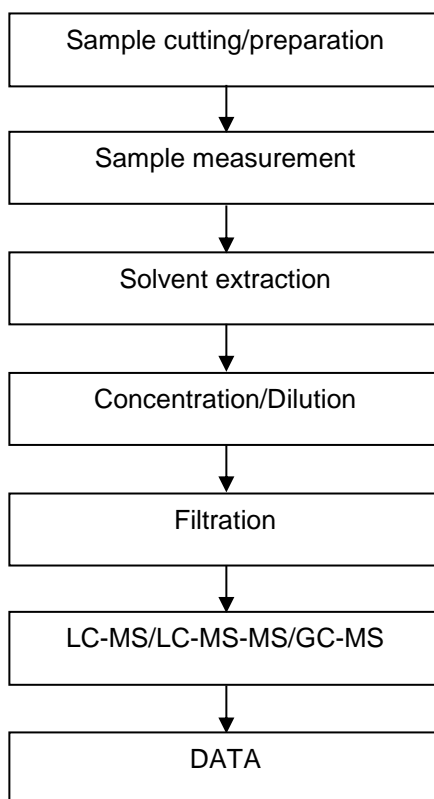
3rd Building, No. 889 Yishan Road Xuhui District, Shanghai China 200233
中国·上海·徐汇区宜山路889号3号楼 邮编: 200233

t E&E (86-21) 61402553 f E&E (86-21) 64953679 www.sgsgroup.com.cn
t HL (86-21) 61402594 f HL (86-21) 61156899 e sgs.china@sgs.com

ATTACHMENTS

PFASs/ PFOS/PFOA Testing Flow Chart

Name of the person who made testing: Mia Zeng
Name of the person in charge of testing: Richer Yu



Unless otherwise agreed in writing, this document is issued by the Company subject to its General Conditions of Service printed overleaf, available on request or accessible at <http://www.sgs.com/en/Terms-and-Conditions.aspx> and, for electronic format documents, subject to Terms and Conditions for Electronic Documents at <http://www.sgs.com/en/Terms-and-Conditions/Terms-e-Documents.aspx>. Attention is drawn to the limitation of liability, indemnification and jurisdiction issues defined therein. Any holder of this document is advised that information contained hereon reflects the Company's findings at the time of its intervention only and within the limits of Client's instructions, if any. The Company's sole responsibility is to its Client and this document does not exonerate parties to a transaction from exercising all their rights and obligations under the transaction documents. This document cannot be reproduced except in full, without prior written approval of the Company. Any unauthorized alteration, forgery or falsification of the content or appearance of this document is unlawful and offenders may be prosecuted to the fullest extent of the law. Unless otherwise stated the results shown in this test report refer only to the sample(s) tested.

Attention: To check the authenticity of testing / inspection report & certificate, please contact us at telephone: (86-755) 8307 1443, or email: CN.Doccheck@sgs.com

SGS-CSTC (Shanghai) Co., Ltd.
Testing Center-Chemical Laboratory

3rd Building, No. 889 Yishan Road Xuhui District, Shanghai China 200233
中国·上海·徐汇区宜山路889号3号楼 邮编: 200233

t E&E (86-21) 61402553 f E&E (86-21) 64953679 www.sgsgroup.com.cn
t HL (86-21) 61402594 f HL (86-21) 61156899 e sgs.china@sgs.com

Test Report

No.: SHAEC23001493003

Date: Feb 28, 2023

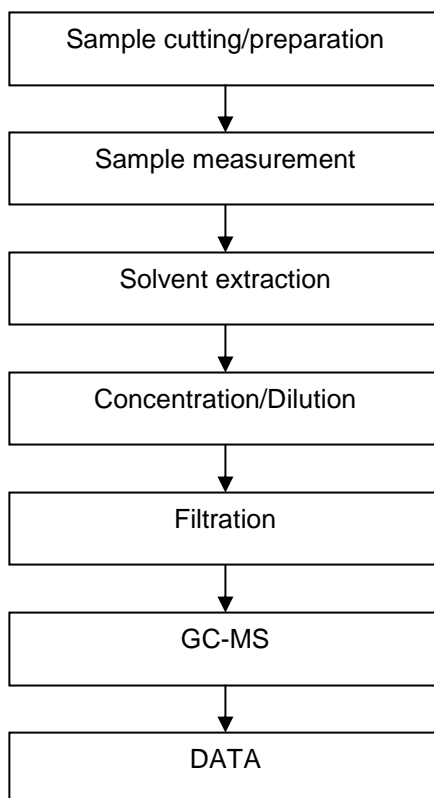
Page 15 of 16

ATTACHMENTS

PAHs Testing Flow Chart

Name of the person who made testing: Nina Fang

Name of the person in charge of testing: Leon Tang



SGS-CSTC (Shanghai) Co., Ltd.
Testing Center-Chemical Laboratory

Unless otherwise agreed in writing, this document is issued by the Company subject to its General Conditions of Service printed overleaf, available on request or accessible at <http://www.sgs.com/en/Terms-and-Conditions.aspx> and, for electronic format documents, subject to Terms and Conditions for Electronic Documents at <http://www.sgs.com/en/Terms-and-Conditions/Terms-e-Documents.aspx>. Attention is drawn to the limitation of liability, indemnification and jurisdiction issues defined therein. Any holder of this document is advised that information contained hereon reflects the Company's findings at the time of its intervention only and within the limits of Client's instructions, if any. The Company's sole responsibility is to its Client and this document does not exonerate parties to a transaction from exercising all their rights and obligations under the transaction documents. This document cannot be reproduced except in full, without prior written approval of the Company. Any unauthorized alteration, forgery or falsification of the content or appearance of this document is unlawful and offenders may be prosecuted to the fullest extent of the law. Unless otherwise stated the results shown in this test report refer only to the sample(s) tested.

Attention: To check the authenticity of testing / inspection report & certificate, please contact us at telephone: (86-755) 8307 1443, or email: CN.Doccheck@sgs.com

3rd Building, No. 889 Yishan Road Xuhui District, Shanghai China 200233 t E&E (86-21) 61402553 f E&E (86-21) 64953679 www.sgsgroup.com.cn
中国·上海·徐汇区宜山路889号3号楼 邮编: 200233 t HL (86-21) 61402594 f HL (86-21) 61156899 e sgs.china@sgs.com

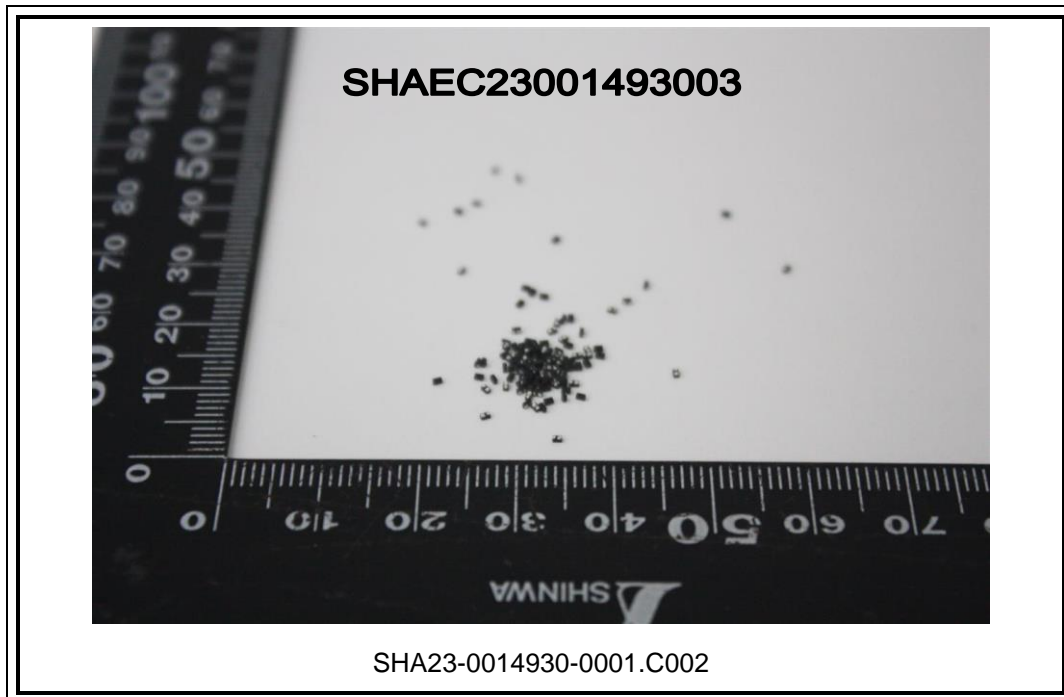
Test Report

No.: SHAEC23001493003

Date: Feb 28, 2023

Page 16 of 16

Sample Photo:



SGS authenticate the photo on original report only
*** End of Report ***



SGS-CSTC (Shanghai) Technical Services (Shanghai) Co., Ltd.
Testing Center-Chemical Laboratory

Unless otherwise agreed in writing, this document is issued by the Company subject to its General Conditions of Service printed overleaf, available on request or accessible at <http://www.sgs.com/en/Terms-and-Conditions.aspx> and, for electronic format documents, subject to Terms and Conditions for Electronic Documents at <http://www.sgs.com/en/Terms-and-Conditions/Terms-e-Documents.aspx>. Attention is drawn to the limitation of liability, indemnification and jurisdiction issues defined therein. Any holder of this document is advised that information contained hereon reflects the Company's findings at the time of its intervention only and within the limits of Client's instructions, if any. The Company's sole responsibility is to its Client and this document does not exonerate parties to a transaction from exercising all their rights and obligations under the transaction documents. This document cannot be reproduced except in full, without prior written approval of the Company. Any unauthorized alteration, forgery or falsification of the content or appearance of this document is unlawful and offenders may be prosecuted to the fullest extent of the law. Unless otherwise stated the results shown in this test report refer only to the sample(s) tested.

Attention: To check the authenticity of testing / inspection report & certificate, please contact us at telephone: (86-755) 8307 1443, or email: CN.Doccheck@sgs.com

3rd Building, No. 889 Yishan Road Xuhui District, Shanghai China 200233 t E&E (86-21) 61402553 f E&E (86-21) 64953679 www.sgsgroup.com.cn
中国·上海·徐汇区宜山路889号3号楼 邮编: 200233 t HL (86-21) 61402594 f HL (86-21) 61156899 e sgs.china@sgs.com