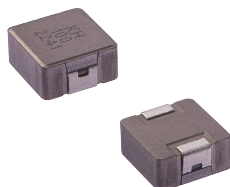


MDA Series

SMD Low Profile High Current Molded Inductor

Size 1360



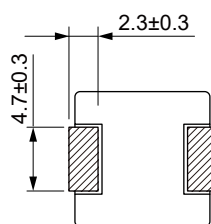
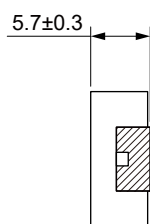
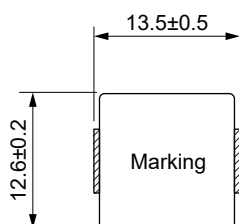
FEATURES

- Shielded construction
- Capable of corresponding high frequency .
- Low loss realized with low DCR.
- High performance (Isat) realized by metal dust core.
- Ultra low buzz noise, due to composite construction.
- 100% Lead(Pb)-Free and RoHS compliant.
- AEC-Q200 qualified
- Operating temperature: -55 to +155 °C (including self-temperature rise)
- Quantity: 500PCS

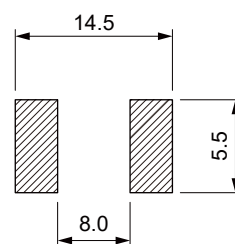
APPLICATION

- Headlamps, tail lamps and interior lighting
- HVAC
- Doors, window lift and seat control
- Audio subsystem
- Digital instrument cluster
- In-Vehicle Infotainment and navigation

Dimensions: [mm]



Land Pattern: [mm]



Electrical Properties:

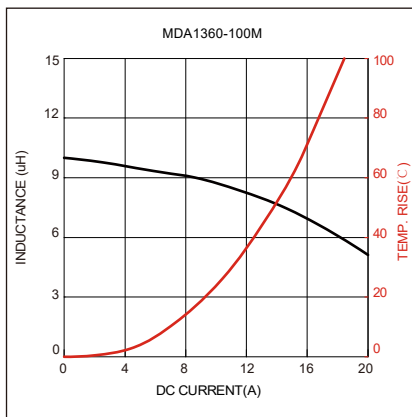
Part No	Inductance @ 100KHz/1V (μH)	Tolerance	Temperature Rise Current Typ. (A)	Temperature Rise Current Max. (A)	Saturation Current Typ. (A)	Saturation Current Max. (A)	DC Resistance Typ. (mΩ)	DC Resistance Max. (mΩ)
MDA1360-100M	10.0	±20%	12.0	10.5	16.0	14.5	15.5	18.6

Saturation Current will cause L to drop approximately 30%

Temperature Rise Current: The actual value of DC current when the temperature rise is $\Delta T=40^{\circ}\text{C}$

				UNIT: MM	KOHER elec KOHER (Shanghai) Electronic Co.,Ltd
				SHEET: 1/2	
				APPROVAL: WS	
A0	19-MAY-23	PDF	WL	SIZE: A4	DESCRIPTION: SMD Low Profile High Current Molded Inductor
REV	DATE	FILE	BY	PACKING UNIT: 500 pcs	PART NO: MDA1360-100M

Typical Electrical Characteristics:



				UNIT: MM	KOHERelec KOHER (Shanghai) Electronic Co.,Ltd
				SHEET: 2/2	
				APPROVAL: WS	
A0	19-MAY-23	PDF	WL	SIZE: A4	DESCRIPTION: SMD Low Profile High Current Molded Inductor
REV	DATE	FILE	BY	PACKING UNIT: 500 pcs	PART NO: MDA1360-100M