


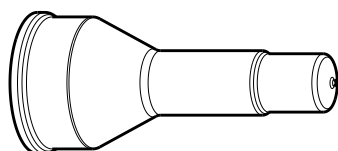
2019

RELEASED FOR PUBLICATION

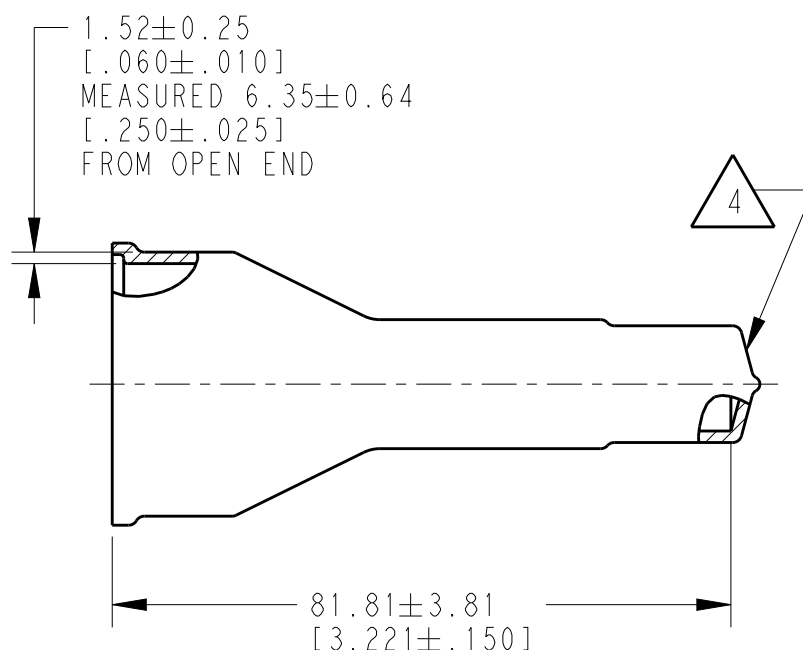
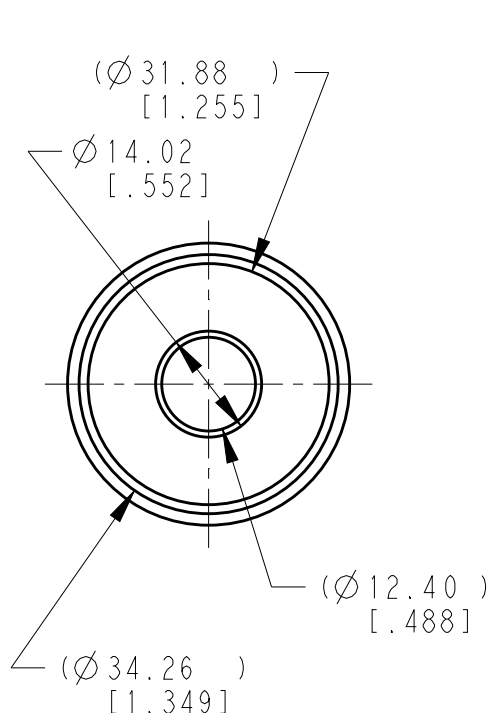
THIS DRAWING IS UNPUBLISHED.

© COPYRIGHT 2014 TE Connectivity. All Rights Reserved.

LOC	DIST	REVISIONS					
		P	LTR	DESCRIPTION	DATE	DWN	APVD
			A	NEW RELEASE PER ECO-14-012864	27AUG2014	DM	DM
			A1	REVISED PER PCN E-19-017229	06NOV2019	JA	IG




SCALE 1:2



- 4 SMALL MATERIAL EXTENSION IS ACCEPTABLE ON THIS END ALL AROUND,
3. THIS ACCESSORY PART IS PROVIDED WITHOUT TYPICAL TRANSPORTATION INDUSTRY PROCESS CONTROL. NO VALIDATION TESTING HAS BEEN PERFORMED. CUSTOMER IS RESPONSIBLE FOR DETERMINING PRODUCT PERFORMANCE AND SUITABILITY FOR APPLICATION.
2. TEMPERATURE RATING: -29° TO +100°C [-20°F TO +121°F].
1. THIS PART IS USED ON:
 HD10-9-XXX RECEPTACLES
 HD14-9-XXX RECEPTACLES
 HD16-9-XXX PLUG
 WHERE XXX IS PIN ARRANGEMENTS

NOTES:

TE INTERNAL PN	DEUTSCH PN
HD10-9BT	HD10-9BT

DIMENSIONS: mm [INCHES]		DWN D.MEYER	27AUG2014	MATERIAL PVC		FINISH GRAY		
<div>TOLERANCES UNLESS OTHERWISE SPECIFIED:</div> <div>0 PLC ±</div> <div>1 PLC ±</div> <div>2 PLC ±</div> <div>3 PLC ±0.64 [.025]</div> <div>4 PLC ±</div> <div>ANGLES ±5°</div>		CHK I. GRANTCHAROVA	27AUG2014	<div> TE Connectivity</div>				
		APVD D.MEYER	27AUG2014					
		PRODUCT SPEC		NAME BOOT, RECEPTACLE, SIZE 9 HD10 SERIES				
		APPLICATION SPEC						
		WEIGHT 9.08g		SIZE A 4	CAGE CODE 4AFU8	DRAWING NO C-HD10-9BT		RESTRICTED TO -
CUSTOMER DRAWING				SCALE 1 : 1		SHEET 1	OF 1	REV A1