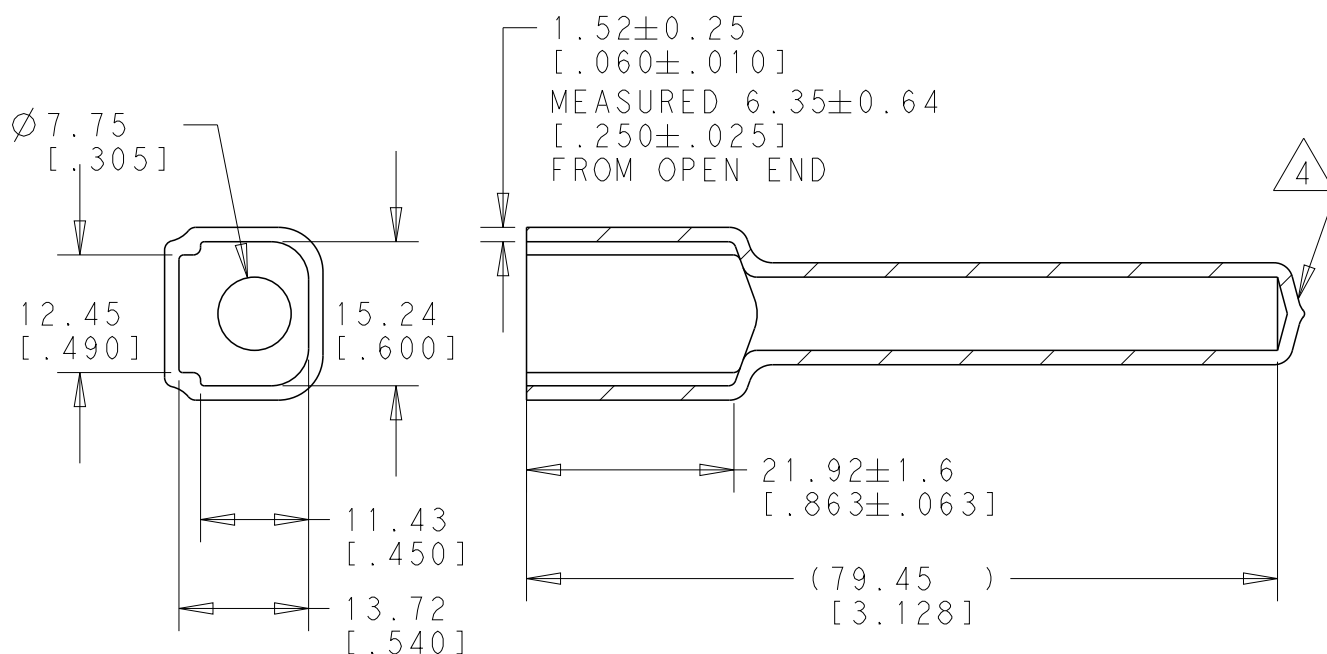
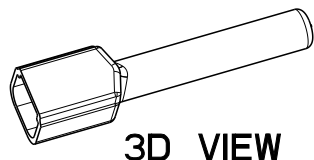



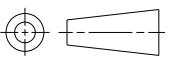
REVISIONS

P	LTR	DESCRIPTION	DATE	DWN	APVD
	A	NEW RELEASE PER ECO-14-010242	07-07-14	DM	DM
	A1	REVISED PER PCN E-20-003641	24FEB2020	AP	IG



5. SMALL NON-FILLS ARE ACCEPTABLE INSIDE OF PART, INCLUDING SUPPLIER MARKING.
4. SMALL MATERIAL EXTENSION IS ACCEPTABLE ON THIS END ALL AROUND. WALL THICKNESS ON THIS END MAY VARY.
3. THIS ACCESSORY PART IS PROVIDED WITHOUT TYPICAL TRANSPORTATION INDUSTRY PROCESS CONTROLS. NO VALIDATION TESTING HAS BEEN PERFORMED. CUSTOMER IS RESPONSIBLE FOR DETERMINING PRODUCT PERFORMANCE AND SUITABILITY FOR APPLICATION.
2. TEMPERATURE RATING: -29°C TO +100°C [-20°F TO +212°F]
1. THIS PART IS USED ON DTM04-4P RECEPTACLES WITH ANY MODIFICATION THAT DOES NOT INCLUDE AN END CAP.

TE INTERNAL PN	DEUTSCH PN
DTM4P-BT	DTM4P-BT

DIMENSIONS: MM [INCHES]		DWN D. MEYER	07JUL2014	MATERIAL PVC		FINISH GRAY					
TOLERANCES UNLESS OTHERWISE SPECIFIED: 0 PLC ± 1 PLC ± 2 PLC ±0.63[.025] 3 PLC ± 4 PLC ± ANGLES ±5°		CHK B. MILLIGAN	07JUL2014	 TE Connectivity							
		APVD D. MEYER	07JUL2014								
		PRODUCT SPEC -		NAME BOOT, RECEPTACLE, 4PIN DTM SERIES							
		APPLICATION SPEC -									
		WEIGHT 7.00		SIZE A 4		CAGE CODE 4AFU8	DRAWING NO C-DTM4P-BT	RESTRICTED TO -			
		CUSTOMER DRAWING							SCALE 5:4	SHEET 1 OF 1	REV A1