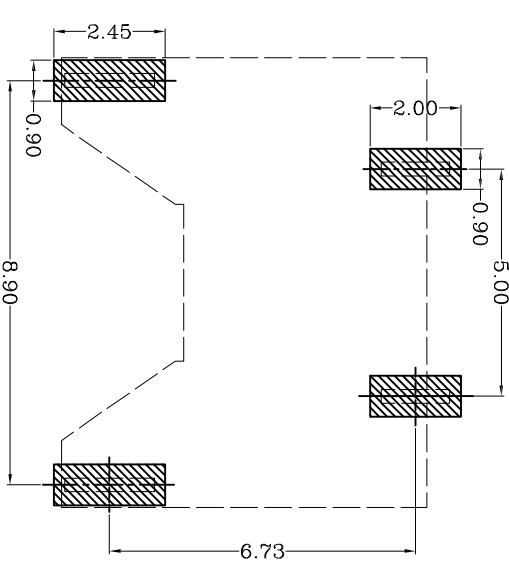
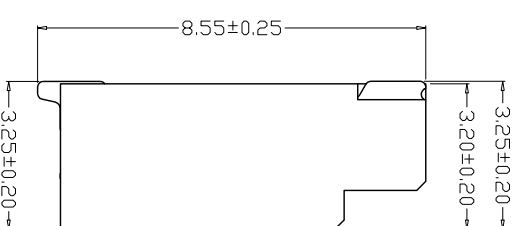
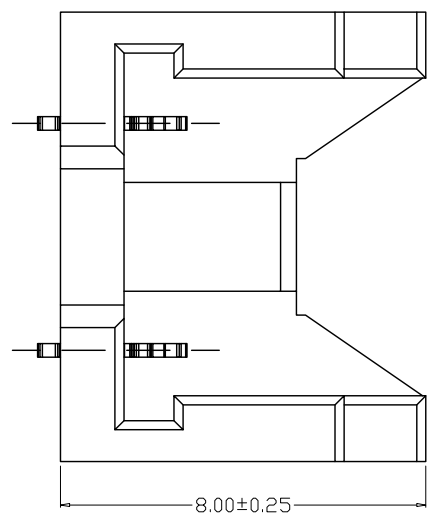
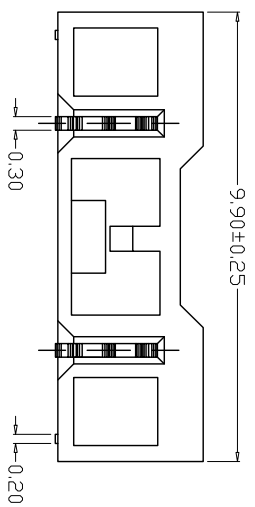
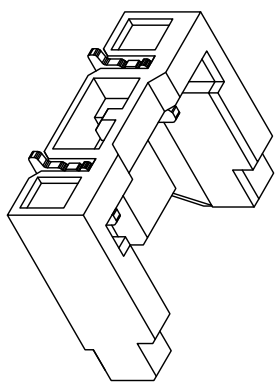


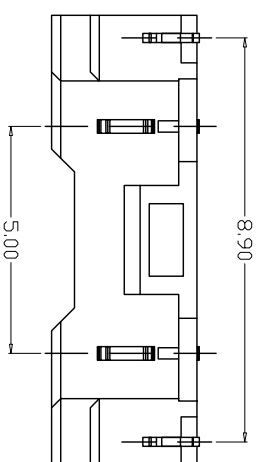
REV.	ECN. NO.	APPD.
A		

**SPECIFICATIONS**

Current Rating: 1A AC, DC  
Voltage Rating: 250V AC, DC  
Temperature Range: -25°C ~ +130°C  
Contact Resistance: 20mΩ Max  
Insulation Resistance: 1000MΩ Min  
Withstanding Voltage: 1000V AC/minute  
Material: PA9T UL94V-0  
Wafer: C2680 Tin-plated  
Fixed piece: C2680 Tin-plated



**PCB LAYOUT**



X. ±0.30	X.° ±5°	UNITS mm
.X ±0.20	.X° ±2°	MAT'L
.XX ±0.10	.XX° ±1°	FINISH
.XXX ±0.05	.XXX° ±0.5°	
FLAT CABLE CONNECTOR		Q'TY

NAME (INTENDED USE)	PART NO. (INTENDED USE)
CHKD: LISA	DR: ZOE
APPD: SUNNY	2023-06-16

MINTRON CO., LTD.	
TITLE:	5002系列 2P贴片板
DWG NO.:	MT5002-02A
SCALE	1/1
SHEET	1/1
REV.	A