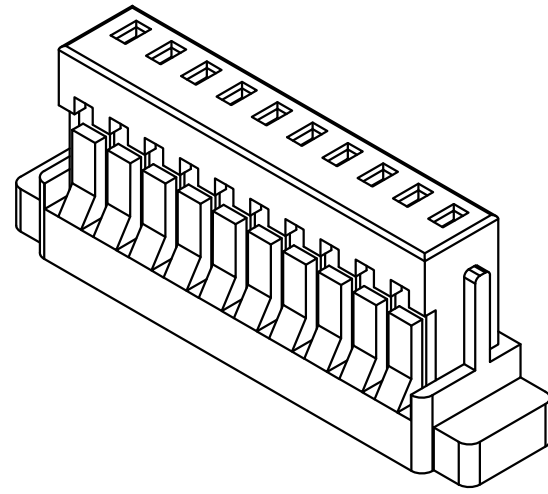
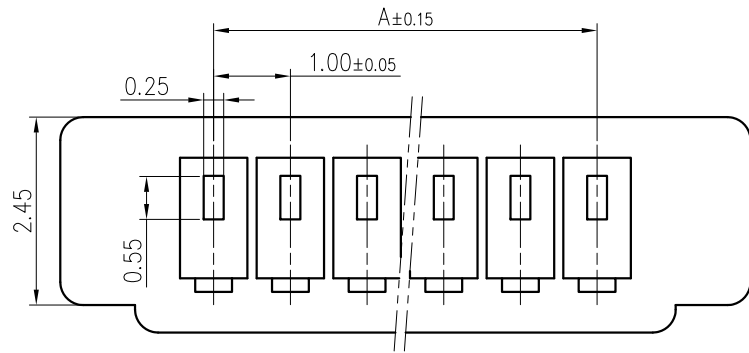


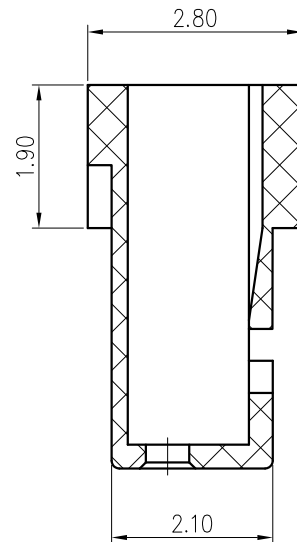
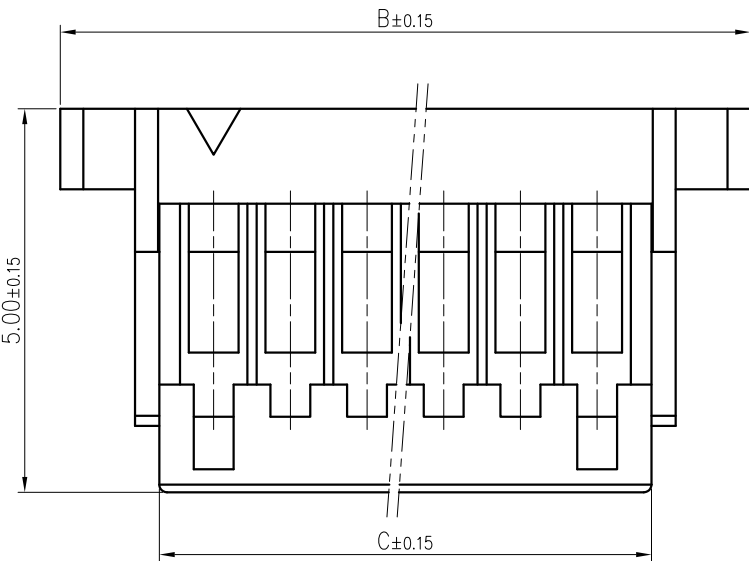
| 标记 MARK. | 更改内容 MODIFICATION | 日期 DATE | 修改 DRAW | 核准 APPROVE |
|-------------|----------------------|------------|------------|---------------|
| | | | | |
| | | | | |



技术要求Specification:

- 1、材质Material: PA66 UL94V-0;
- 2、塑件表面平整光洁, 无明显的毛刺、气泡、变形、浇口拉伤、缺料等不良现象。

Plastic surface smooth and clean, no obvious burrs, bubbles, distortion, gate strain, lack of material and other undesirable phenomena.



| 线数 | 型号 | 尺寸 | | |
|----|-------------|-------|-------|-------|
| | | A | B | C |
| 2 | SH10000-2Y | 1.00 | 5.00 | 2.40 |
| 3 | SH10000-3Y | 2.00 | 6.00 | 3.40 |
| 4 | SH10000-4Y | 3.00 | 7.00 | 4.40 |
| 5 | SH10000-5Y | 4.00 | 8.00 | 5.40 |
| 6 | SH10000-6Y | 5.00 | 9.00 | 6.40 |
| 7 | SH10000-7Y | 6.00 | 10.00 | 7.40 |
| 8 | SH10000-8Y | 7.00 | 11.00 | 8.40 |
| 9 | SH10000-9Y | 8.00 | 12.00 | 9.40 |
| 10 | SH10000-10Y | 9.00 | 13.00 | 10.40 |
| 11 | SH10000-11Y | 10.00 | 14.00 | 11.40 |
| 12 | SH10000-12Y | 11.00 | 15.00 | 12.40 |
| 13 | SH10000-13Y | 12.00 | 16.00 | 13.40 |
| 14 | SH10000-14Y | 13.00 | 17.00 | 14.40 |
| 15 | SH10000-15Y | 14.00 | 18.00 | 15.40 |
| 16 | SH10000-16Y | 15.00 | 19.00 | 16.40 |
| 17 | SH10000-17Y | 16.00 | 20.00 | 17.40 |
| 18 | SH10000-18Y | 17.00 | 21.00 | 18.40 |
| 19 | SH10000-19Y | 18.00 | 22.00 | 19.40 |
| 20 | SH10000-20Y | 19.00 | 23.00 | 20.40 |

| | | | | | | | |
|--------------------------------------|---------|--------------------|------------------------------|----------------|---------------|-----|--------------|
| TOLERANCE UNLESS OTHERWISE SPECIFIED | | *: Inspection Item | | 兆星精密电子(深圳)有限公司 | | | |
| .X±0.30 | X.° ±1° | (NO.) | :Cp/Cpk and SPC Control Item | | | | |
| .XX±0.20 | .X° ± | | | 材料 | PA66 | 名称 | SH1.0胶壳-8Pin |
| .XXX±0.10 | .XX° ± | 料厚 | | 编号 | ZX-SH1.0-8PJK | 单位 | m m |
| 制图 | | 料宽 | | 比例 | 1:1 | 版本 | A |
| 审核 | | 日期 | | 角法 | | 规格书 | |
| 批准 | | | | | | | |