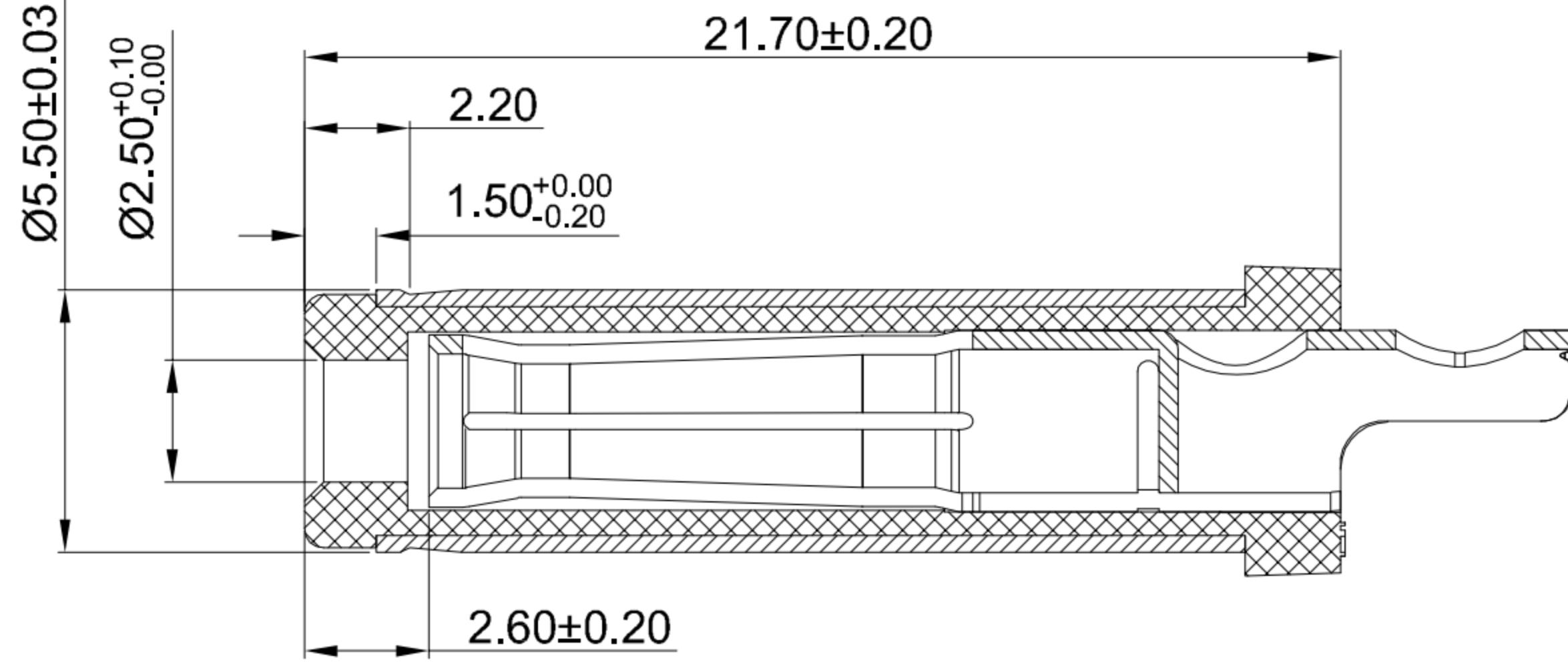
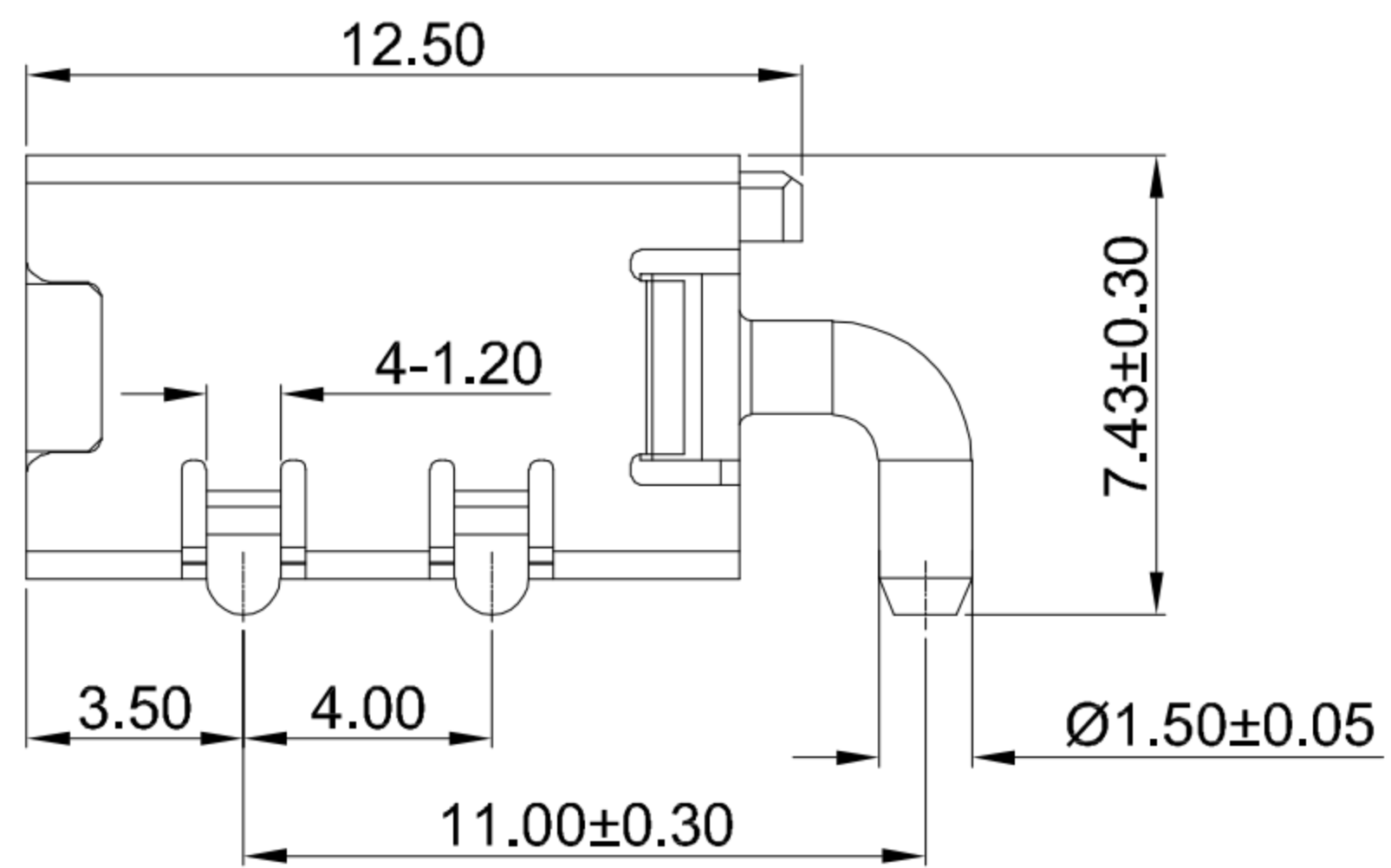
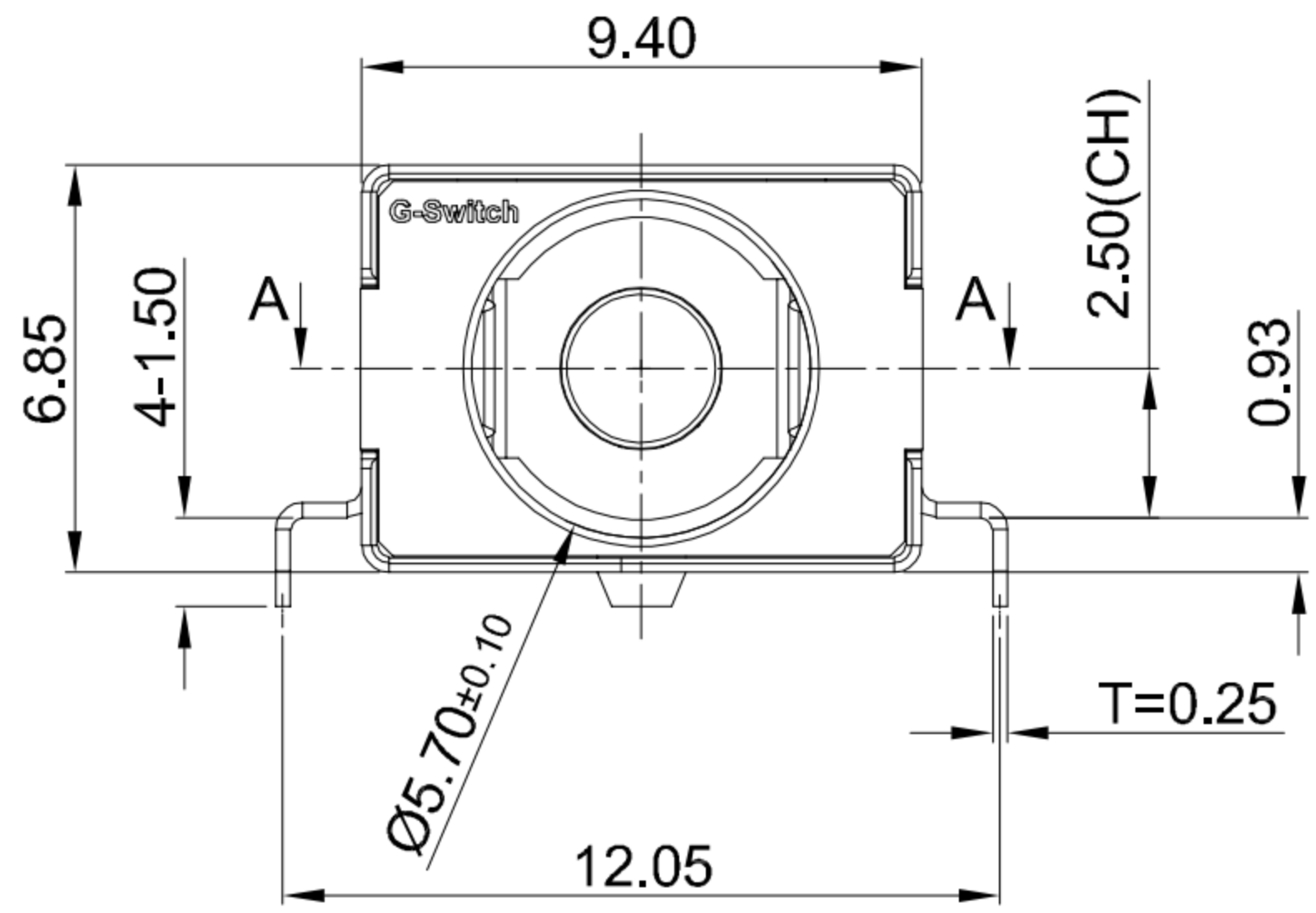
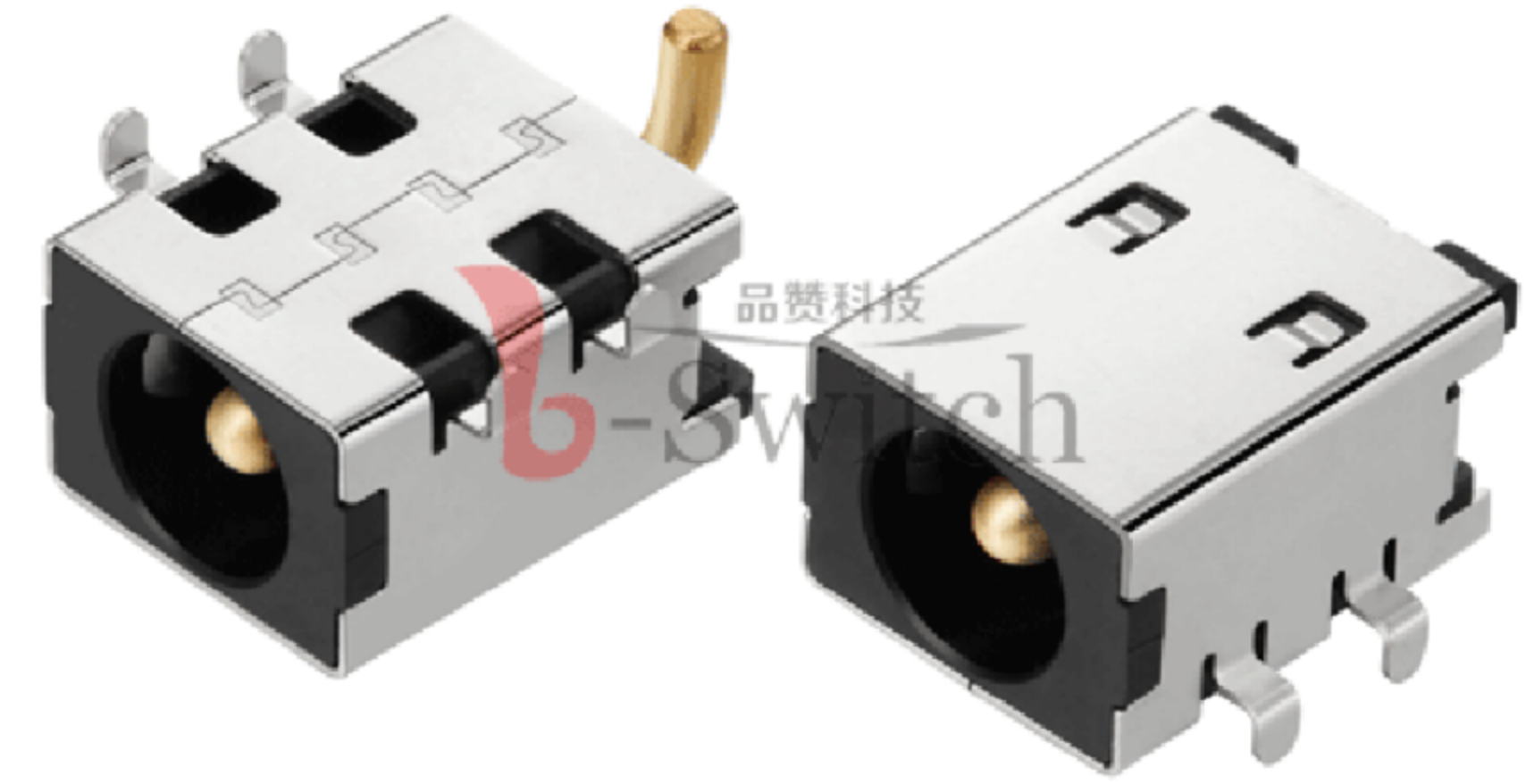
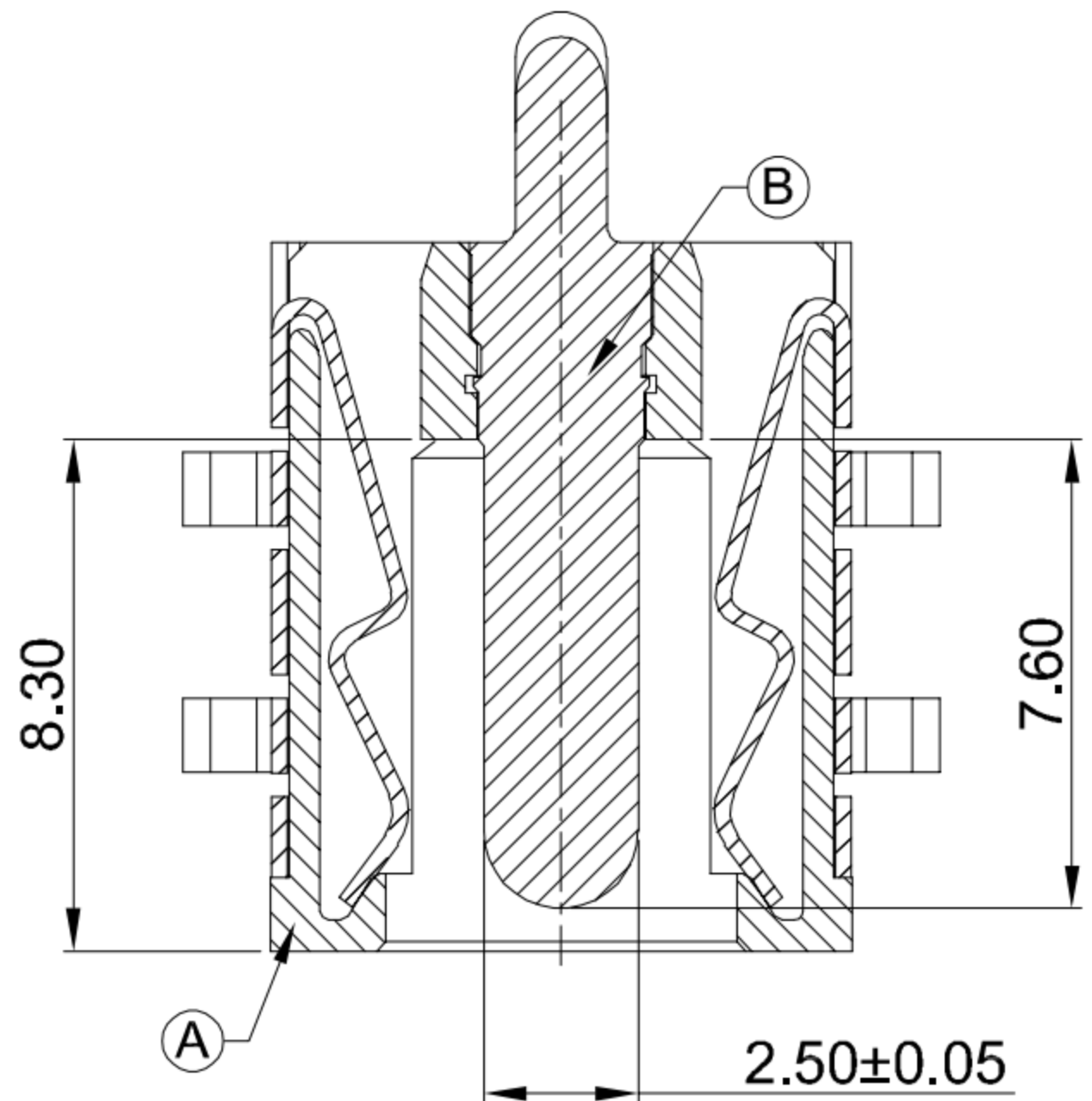


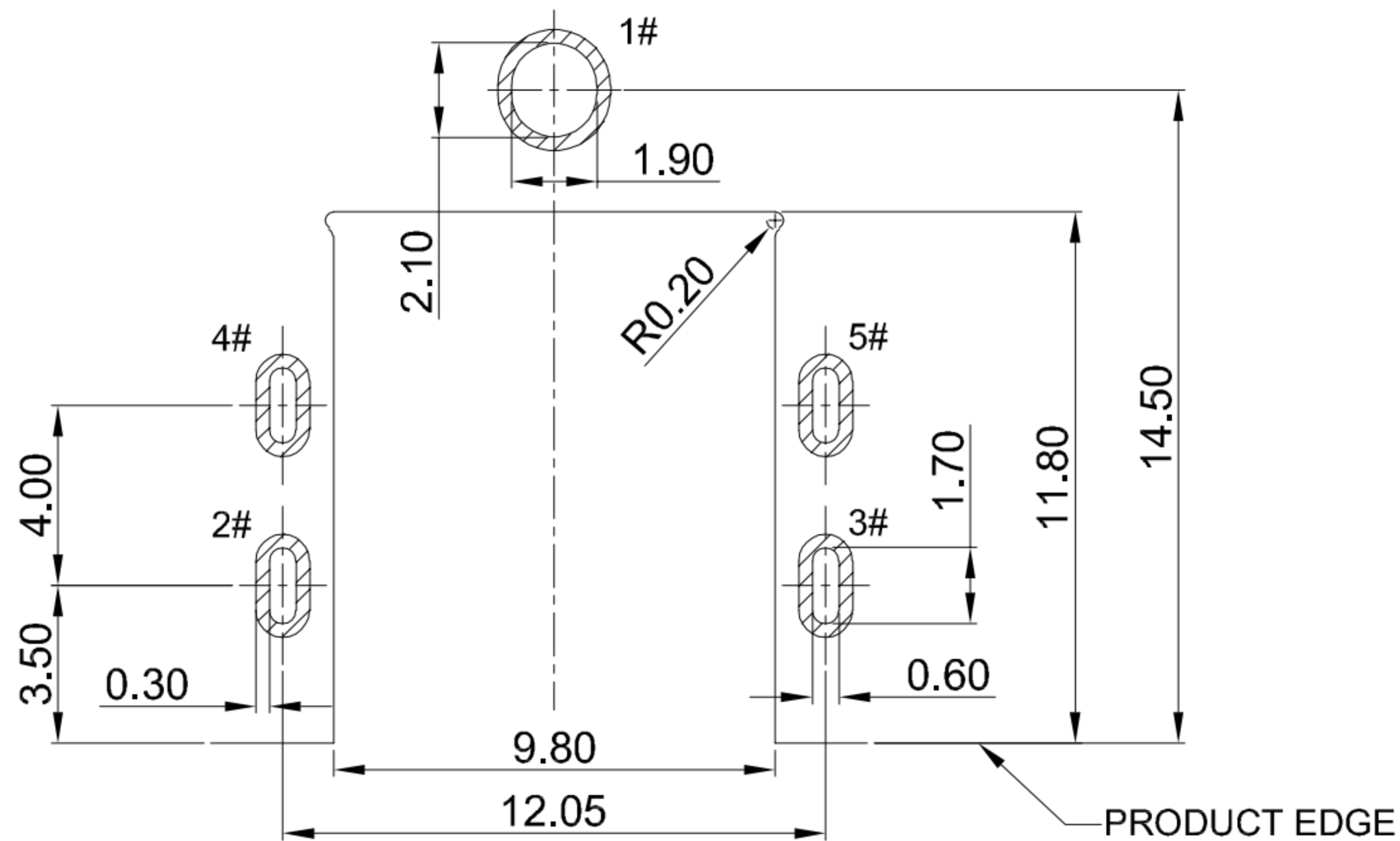
CIRCUIT DIAGRAM



MATING PLUG Ø5.5xØ2.5mm



SECTION A-A



RECOMMENDED PCB LAYOUT
TOLERANCE:±0.05

- G-Switch Specification:**
1. Operating temperature range: -40°C ~ +85°C
 2. Rated load: 15A.30V DC
 3. Insulation resistance: 100MΩ min
 4. Withstand voltage: 500V AC/min
 5. Contact resistance: 30mΩ max
 6. Durability cycle: 5000 Cycles
 7. Insertion and extraction force: 3-30N

| | | | |
|-----|------------|--------------------------|---------------|
| A | HOUSING | HIGH TEMPERATURE PLASTIC | PA10T BLACK |
| B | CENTER PIN | BRASS | GOLD FLASH/Ni |
| C | SHELL | C5210 | Ni PLATING |
| NO. | PART NAME | MATERIAL | REMARK |



| | |
|-------------------------------------|----------|
| SCALE: 1:1 | UNIT: mm |
| SIZE: A4 | |
| Unless otherwise General tolerance: | |
| X | ±0.50 |
| X.x | ±0.30 |
| X.xx | ±0.20 |
| X.xxx | ±0.10 |
| X.x° | ±3° |

| | | | |
|---------------------------------------------------------------------------|---------|----------|------------|
| Title: Horizontal DC Power Jack 5525 DIP Sink0.93 CH=2.5 L=12.5 Ø2.5mm | | | |
| Molde Code: DC-S007A-D025-15A | | | |
| DRAWN | CHECKED | APPROVED | DATE |
| Xia | Chen | Chen | 2023.02.01 |



REV: A0 SHEET: 1/1