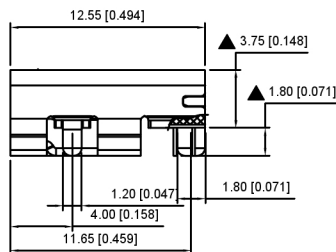
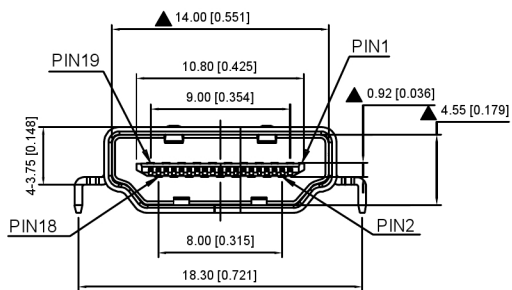


TOLERANCE: ±0.05  
 RECOMMENDED PCB LAYOUT  
 (TOP VIEW)  
 XKB CONNECTIVITY



XKB CONNECTIVITY

### A71-05H8-1X1N2

1:AU 1U"  
 5:AU 15U"  
 6:AU 30U"

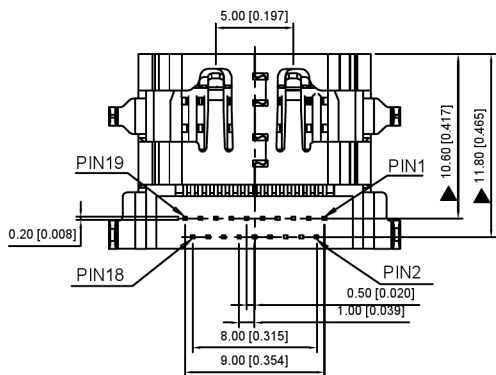
XKB CONNECTIVITY

#### NOTES:

- 1.电子电路 ELECTRONIC:  
 接触电阻 CONTACT RESISTANCE:20mohm MAX  
 绝缘电阻 INSULATION RESISTANCE:1000 Mohm MIN  
 耐电压 WITHSTAND VOLTAGE:AC 500V.1min.
- 2.机械 MECHANICAL:  
 耐用性 DURABILITY:10000 CYCLE.
- 3.环境特性 ENVIRONMENT CHARACTERISTICS:  
 工作温度 OPERTING TEMPERATURE:-55°C TO +105°C
- 4.RECOMMANDER PCB THICKNESS 1.2
- 5.标标"▲"符的尺寸为重点检验尺寸:
- 6.MATERIAL LIST:

XKB CONNECTIVITY

No.	PART NAME	QTY	MATERIAL	REMARK
3	SHELL	1	COPPER ALLOY T=0.50	NI PLATED
2	CONTACT	19	COPPER ALLOY T=0.20	AU/TIN PLATED
1	HOUSING	1	THERMOPLASTIC	(UL 94V-0) BLACK



广东星坤科技股份有限公司  
 文件工程章

MARK	DATE	DESCRIPTION	DATE	REVISED	APPROVED	UNSPECIFIED TOLERANCES
▲						ANGLAR ±5°
▲						L ≤ 4 ±0.2
▲						4 < L ≤ 16 ±0.3
▲						16 < L ≤ 63 ±0.4
▲						L > 63 ±0.5

DSND		SCALE: N/A	MODEL TYPE: HDMI CONNECTOR
DWN		VIEW:	PART NO.:
CHKD		UNIT: mm/in	DWG NO.:
APPD		SIZE: A4	A71-05H8-1X1N2
		WEIGHT	SHEET
			REVISION
		1/1	A0



XKB INDUSTRIAL PRECISION CO., LIMITED