

### Features/Benefits

- Up to 10 poles per module
- Various contact terminals
- Various mounting & switch ganging configurations
- Mechanical indicator buttons
- RoHS compliant

### Typical Applications

- Audio selection
- Digital equipment interface
- Medical equipment interface

### Specifications

SWITCHING POWER: F module max. AC/DC: Silver: 50 VA/15W, Gold: 1 VA/300 mW.

SWITCHING VOLTAGE: F module max. AC/DC: Silver: 125/30V, Gold: 50/30 V.

SWITCHING CURRENT: F module max. AC/DC: Silver: 0.5A/0.5A, Gold: 0.04A/0.01A.

CARRYING CURRENT: Max at  $\Delta u = 20^\circ\text{C}$ : Silver: < 2A, Gold: <0.5A.

DIELECTRIC STRENGTH (50 Hz, 1 min.): Chassis/contact:  $\geq 1500\text{V}$  Between contacts:  $\geq 1500\text{V}$ .

OPERATING LIFE "OA/EE" (24V/200mA):  $> 10^5$  operations "GR":  $> 3.5 \times 10^4$  operations.

CONTACT RESISTANCE: Initial: Typical  $\leq 10\text{ m}\Omega$ , max. 20 m $\Omega$  After operating life:  $\leq 100\text{ m}\Omega$

INSULATION RESISTANCE:  $\geq 10^9\ \Omega$  between open contacts,  $\geq 10^9\ \Omega$  between chassis and contacts.

CAPACITANCE (at  $f = 10\text{ kHz}$ ):  $\leq 0.7\text{ pF}$  between 2 contacts.

TOTAL TRAVEL/LATCHING TRAVEL: 4.7mm/3.3mm (.185 inch/.130 inch).

All models and options are RoHS compliant and compatible.

**NOTE:** All models and options are RoHS compliant and compatible.

**NOTE:** Specifications and materials listed above are for switches with standard options. For information on specific and custom switches, consult Customer Service Center.

TYPICAL F OPERATING FORCE: 2U: 6.5N (650 grams); 4U: 6.5N (650 grams); 6U: 7.5N (750 grams); 8U: 9.0N (900 grams); 10U: 9.0N (900 grams).

EUROPEAN TYPICAL SF OPERATING FORCE: 2U:  $3.5\text{N} \pm 0.5\text{N}$  (350 grams  $\pm$  100 grams); 4U:  $5\text{N} \pm 1\text{N}$  (500 grams  $\pm$  100 grams); 6U:  $6.5\text{N} \pm 1\text{N}$  (650 grams  $\pm$  100 grams); 8U:  $9.0\text{N} \pm 1\text{N}$  (900 grams  $\pm$  100 grams).

OPERATING TEMPERATURE RANGE:  $-40^\circ\text{C}$  to  $70^\circ\text{C}$ .

### Materials

HOUSING: Polycarbonate UL 94V-0 or polyester UL 94V-0.

ACTUATOR: Polyester UL 94V-0.

MOVABLE CONTACTS: Bimetal brass, silver plated, gold plate over nickel.

STATIONARY CONTACTS & TERMINALS: Brass, silver plated, gold plated.

TERMINAL BOARD: Polyester UL 94V-0.

RETURN SPRING: Music wire.

TERMINAL SEAL: RTV adhesive sealant.

CHASSIS: Steel.

LOCKOUT PIN: Steel.

BLOCKERS: Steel.

### Build-A-Switch

To order, simply select desired option from each category and place in the appropriate box. Available options are shown and described on pages A-88 thru A-95. For additional options not shown in catalog, consult Customer Service Center.

If requesting only a switch, select either a North American or European switch as noted below. Chassis and buttons are sold separately. If multiple stations are selected, we will assume all switches are the same unless noted otherwise.

### North American Order Code - Switch Only



#### Designation

- F** F Series
- FLT** Light touch F series
- ZF** Central mounted F series

#### Contact Arrangement

- 2U** 2PDT
- 4U** 4PDT
- 6U** 6PDT
- 8U** 8PDT
- 10U** 10PDT

#### Mechanical Function

- OA** Momentary
- EE** Alternate (push-push)
- GR** Interlock
- AOR** Central release
- OASP** Momentary with lockout
- GRSP** Interlock with lockout

#### Terminal Sealing

- (NONE)** None
- TB** Top/bottom

#### Terminal Style

- (NONE)** Solder lugs & PC pins
- 01A** Cut solder lugs
- 01B** Cut PC pins, for other configurations, consult factory

#### Electrical Function

- (NONE)** BBM Break-Before-Make
- M** MBB (special) Make-Before-Break

#### Contact Material

- (NONE)** Silver, AG
- AU** Gold

#### Dress nut\*

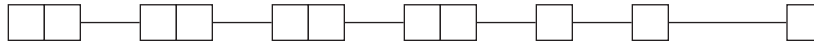
- \*Central mounted F series only
- (NONE)** No dress nut
- B** Black
- C** Chrome



# F Series Pushbutton Switches

Pushbutton  
A

## European Order Code - Switch Only



### Designation

**SF** F Series  
**ZF** Central mounted F series

### Contact Arrangement

**2U** 2PDT  
**4U** 4PDT  
**6U** 6PDT  
**8U** 8PDT

### Mechanical Function

**OA** Momentary  
**EE** Alternate (push-push)  
**GR** Interlock

### Terminal Style

**(NONE)** Solder lugs & PC pins

**LB** Cut solder lugs  
**PB** Cut PC pins, for other configurations, consult factory

### Electrical Function

**(NONE)** BBM

### Contact Material

**(NONE)** Silver, AG  
**P** Gold

### Dress nut\*

\*Central mounted F series only

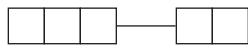
**(NONE)** No dress nut

**B** Black  
**C** Chrome

\*Minimum order quantities apply.

## Order Code - Buttons

### Solid Buttons



### Style

**F01** FMR  
**F02** FG\*  
**F12** FSC  
**F13** FSD  
**F14** FU12  
**F15** FSB  
**F16** FE  
**F19** FA  
**F21** F001

### Button Color

**01** Black  
**02** White  
**03** Red  
**04** Light gray

### Mechanical Indicator Buttons



### Style

**F01** FA100  
**F02** FA101  
**F07** FA120  
**F08** FA201  
**F11** FA200\*

**Shell Color**  
**01** Black

### Out Position Color

**01** Black

### In Position Color

**02** White  
**06** Yellow  
**07** Blue  
**08** Green  
**12** Orange

\*Button options for central mounting configurations, use 'FG' for central mount with chrome dress nut, use 'FA200' for central mount with black dress nut.

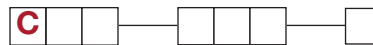
## BUTTON REMOVAL

A button of a push-push switch should only be removed in the "OFF" non-latching position.

## Order Code - Chassis

To order a switch with chassis, create the switch part number listed above and add the Chassis part number configurator information at the end of the part number.

Note: We do not guarantee or recommend interlocking beyond 10 stations.



### No. of Stations

**01 thru 23** Comes with standard .094 (2,4mm) mounting holes  
Note: Single station chassis available with special mounting configurations, consult factory.

### Spacing between Stations

**00** Single station  
**10** 10mm  
**12.5** 12.5mm  
**15** 15mm  
**17.5** 17.5mm  
**20** 20mm

### Special Acknowledgements

See note

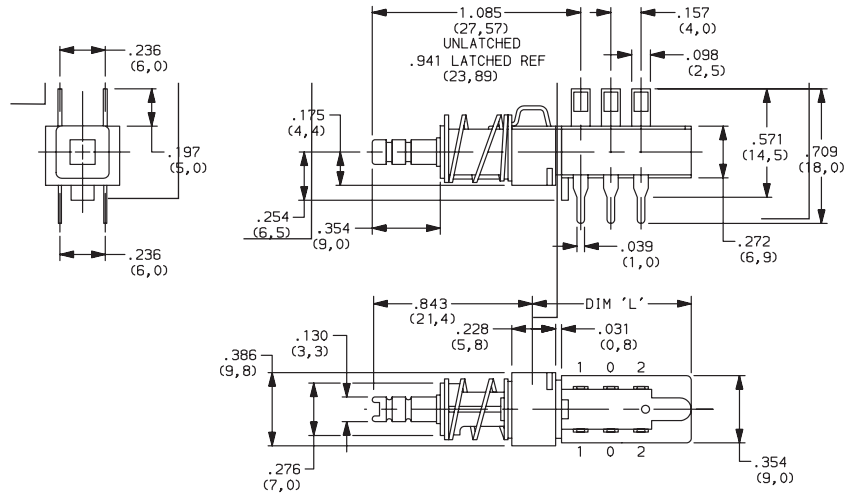
\*Minimum order quantities apply.



### SWITCHES WITH STANDARD OPTIONS

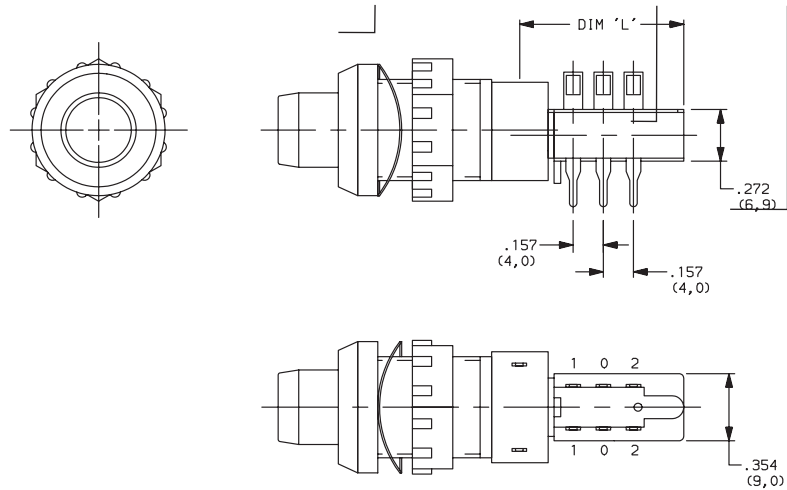
#### F2UEE

CONTACT ARRANGEMENT	LENGTH DIM 'L'
2U	0.827 (21,00)
4U	1.300 (33,00)
6U	1.770 (45,00)
8U	2.240 (57,00)
10U	2.720 (69,00)



#### ZF2UEEBF11010108

CONTACT ARRANGEMENT	LENGTH DIM 'L'
2U	0.827 (21,00)
4U	1.300 (33,00)
6U	1.770 (45,00)
8U	2.240 (57,00)
10U	2.720 (69,00)



### DESIGNATION



#### Designation, North America

- F** F Series
- FLT** Light touch F series
- ZF** Central mounted F series

#### Designation, Europe

- SF** F Series
- ZF** Central mounted F series



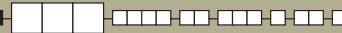
Third Angle Projection

Dimensions are shown: Inches (mm)  
Specifications and dimensions subject to change



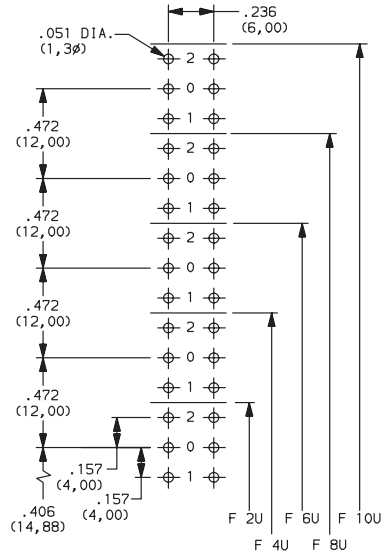
# F Series Pushbutton Switches

## CONTACT ARRANGEMENT



OPTION CODE	NO. OF POLES	SCHEMATIC
<b>2U</b>	2PDT	
<b>4U</b>	4PDT	2X
<b>6U</b>	6PDT	3X
<b>8U</b>	8PDT	4X
<b>10U</b>	10PDT	5X

## PC MOUNTING



## MECHANICAL FUNCTION



### North America

OPTION CODE	FUNCTION
<b>OA</b>	Momentary
<b>EE</b>	Alternate (push-push)
<b>GR</b>	Interlock
<b>AOR</b>	Central release
<b>OASP</b>	Momentary with lockout
<b>GRSP</b>	Interlock with lockout

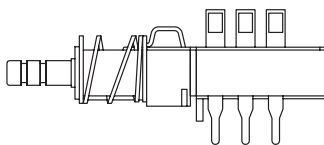
### Europe

OPTION CODE	FUNCTION
<b>OA</b>	Momentary
<b>EE</b>	Alternate (push-push)
<b>GR</b>	Interlock

## TERMINAL SEALING

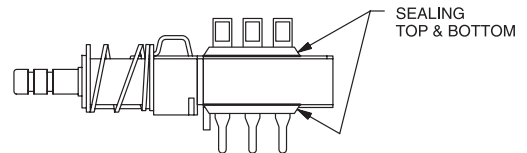


**(NONE)** NO SEAL



F2UEE shown in example above.

**TB** TOP & BOTTOM



**NOTE:** Available for North America only



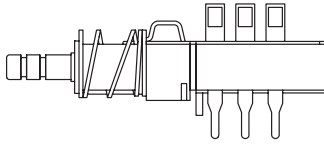
Third Angle Projection



### TERMINAL STYLE

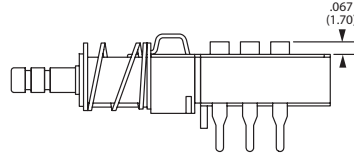


**(NONE)** SOLDER LUGS & PC PINS



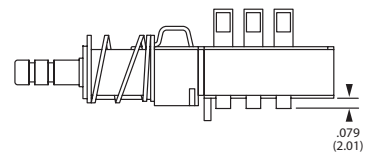
**01A** CUT SOLDER LUGS (North America)

**LB** CUT SOLDER LUGS (Europe)



**01B** CUT PC PINS (North America)

**PB** CUT PC PINS (Europe)



### ELECTRICAL FUNCTION



OPTION CODE	FUNCTION
<b>(NONE)</b>	BBM Non-shorting
<b>M</b>	MBB Shorting (North America only)

### CONTACT MATERIAL



NORTH AMERICA OPTION CODE	EUROPE OPTION CODE	RoHS COMPLIANT *	RoHS COMPATIBLE *	MATERIAL	RATING
<b>(NONE)</b>	<b>(NONE)</b>	YES	YES	SILVER, AG	50 VA/15 W; 125/30 V; 0.5/0.5 A
<b>AU</b>	<b>P</b>	YES	YES	GOLD	1 VA/300mW; 50/30 V; 0.04 A/0.01 A

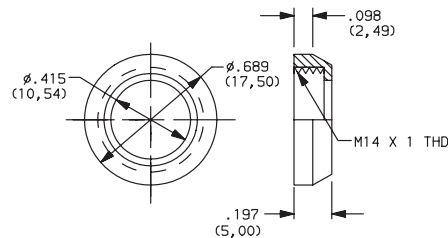
\* Note: See Technical Data section of this catalog for RoHS compliant and compatible definitions and specifications.

### DRESS NUT

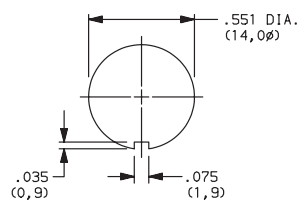


**(NONE)** NO DRESS NUT FOR F & F/LT DESIGNATIONS

**B** BLACK

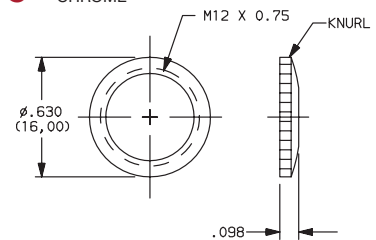


#### PANEL CUTOUT

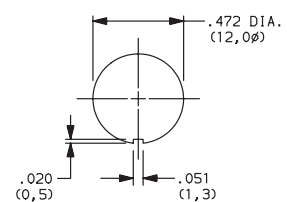


NOTE: Available with ZF designation and FA200 buttons.

**C** CHROME



#### PANEL CUTOUT



NOTE: Available with ZF designation and FG button.



Dimensions are shown: Inches (mm)  
Specifications and dimensions subject to change

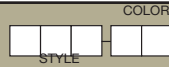


# F Series Pushbutton Switches

Pushbutton

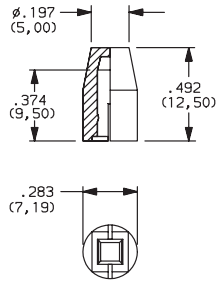
A

## SOLID BUTTON

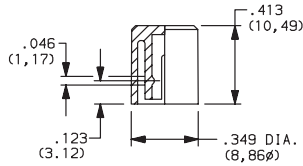


### STYLE

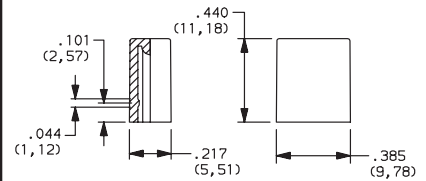
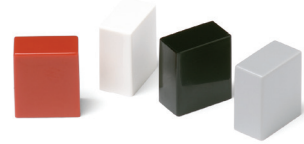
**F01** FMR



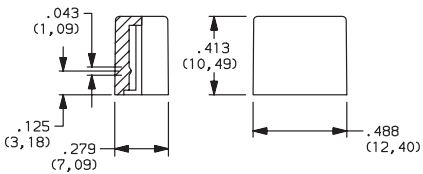
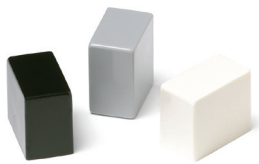
**F02** FG



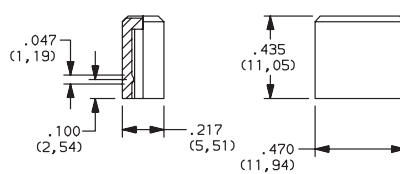
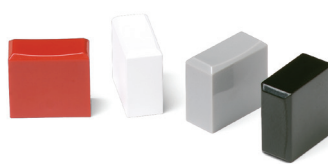
**F12** FSC



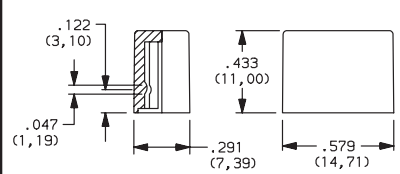
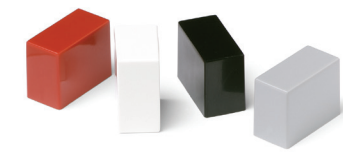
**F13** FSD



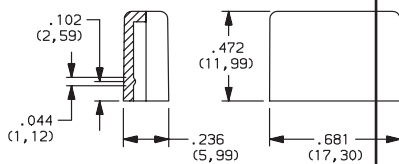
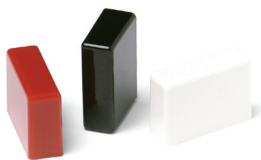
**F14** FU12



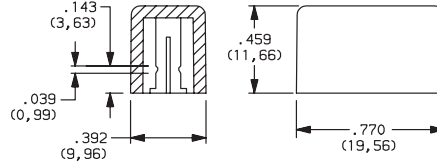
**F15** FSB



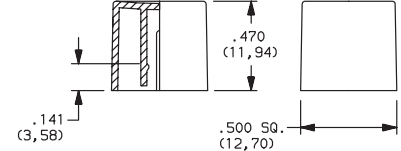
**F16** FE



**F19** FA



**F21** F001



OPTION CODE	COLOR
<b>01</b>	BLACK
<b>02</b>	WHITE
<b>03</b>	RED
<b>04</b>	LT. GRAY

# F Series Pushbutton Switches



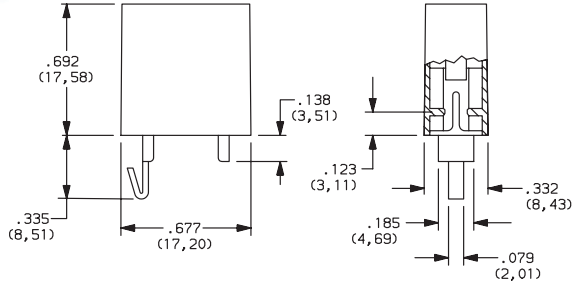
A Pushbutton

## MECHANICAL BUTTON

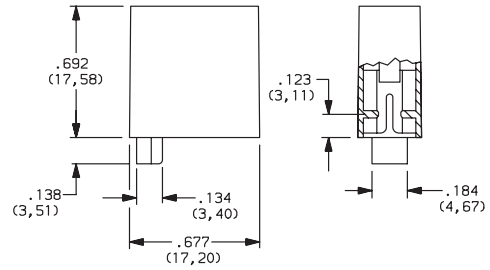


### STYLE

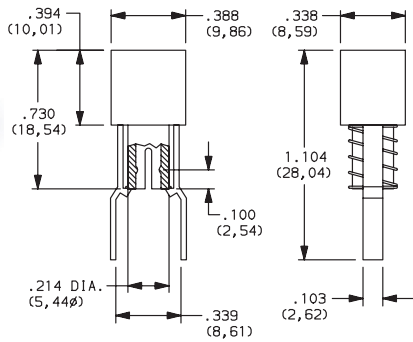
**F01** FA100



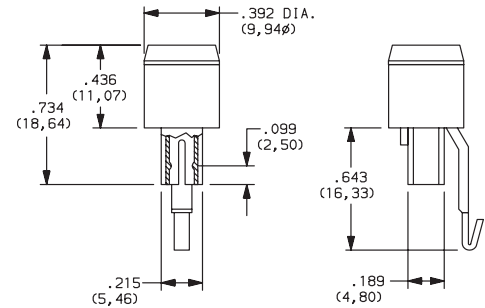
**F02** FA101



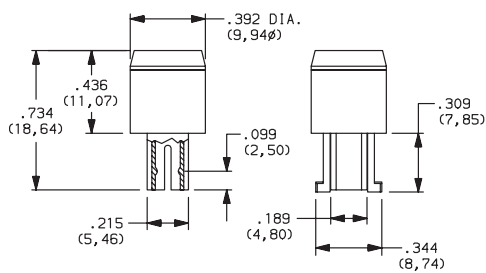
**F07** FA120



**F08** FA201



**F11** FA200



### SHELL COLOR

**01** BLACK

### OUT POSITION COLOR

**01** BLACK

### IN POSITION COLOR

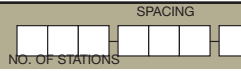
OPTION CODE	COLOR
<b>02</b>	WHITE
<b>06</b>	YELLOW
<b>07</b>	BLUE
<b>08</b>	GREEN
<b>12</b>	ORANGE



# F Series Pushbutton Switches

Pushbutton  
A

**CHASSIS**



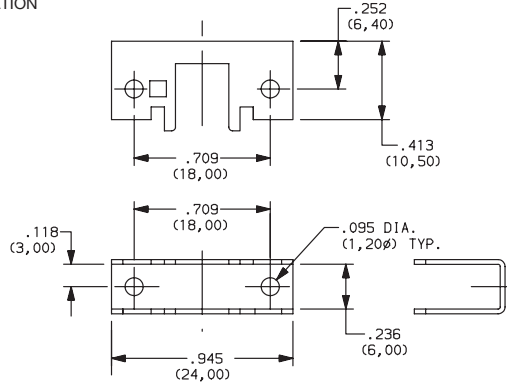
## NUMBER OF STATIONS

**C00 Thru C10** Comes with standard 0.094 (2,44mm) mounting holes

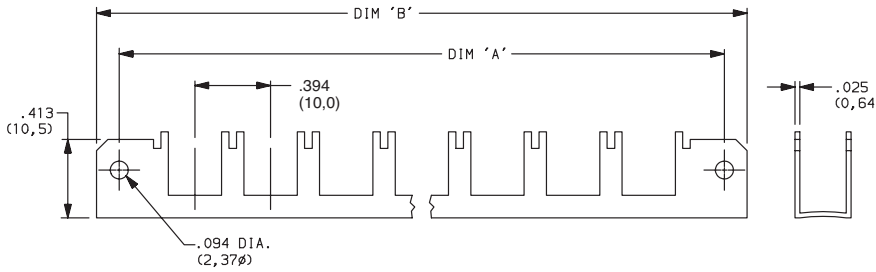
**NOTE:** Single station chassis available with mounting configurations, consult factory.

## SPACING

**00** SINGLE STATION

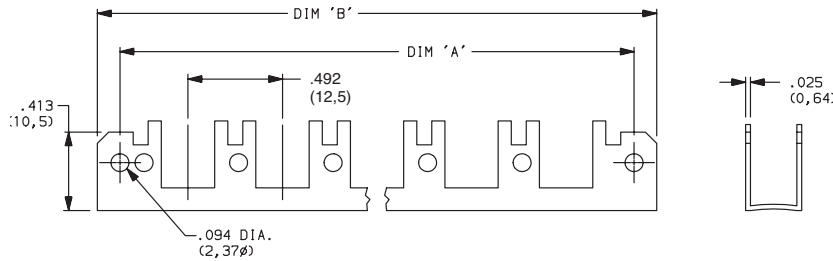


**10** 10mm

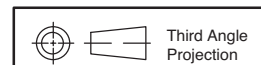


No. of Stations	Dim. 'A'	Dim. 'B'	Tolerance
2	1.182 (30,02)	1.418 (36,02)	0.005
3	1.575 (40,01)	1.811 (46,00)	0.010
4	1.969 (50,01)	2.205 (56,01)	0.010
5	2.363 (60,02)	2.599 (66,01)	0.010
6	2.757 (70,03)	2.993 (76,02)	0.015
7	3.150 (80,01)	3.386 (86,00)	0.015
8	3.544 (90,02)	3.780 (96,01)	0.015
9	3.938 (100,03)	4.174 (106,02)	0.015
10	4.331 (110,01)	4.567 (116,00)	0.015

**12.5** 12.5mm



No. of Stations	Dim. 'A'	Dim. 'B'	Tolerance
2	1.200 (30,48)	1.436 (36,47)	0.005
3	1.692 (42,98)	1.928 (48,97)	0.010
4	2.184 (55,47)	2.420 (61,47)	0.010
5	2.676 (67,97)	2.912 (73,96)	0.010
6	3.169 (80,49)	3.405 (86,49)	0.015
7	3.661 (92,99)	3.897 (98,98)	0.015
8	4.153 (105,49)	4.389 (111,48)	0.015
9	4.645 (117,98)	4.881 (123,98)	0.015
10	5.137 (130,48)	5.373 (136,47)	0.015



Dimensions are shown: Inches (mm)  
Specifications and dimensions subject to change



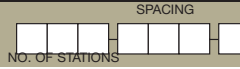


# F Series Pushbutton Switches



A Pushbutton

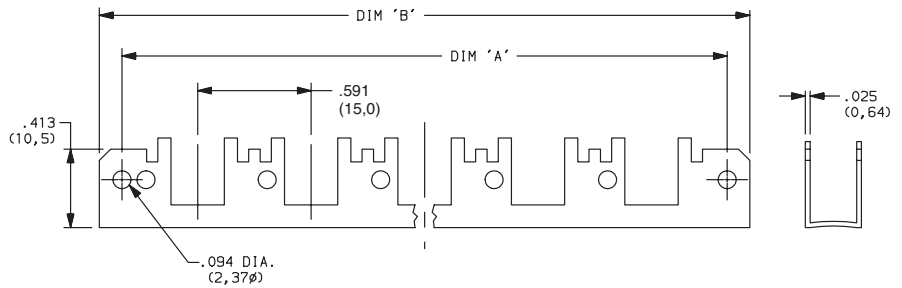
CHASSIS



## SPACING

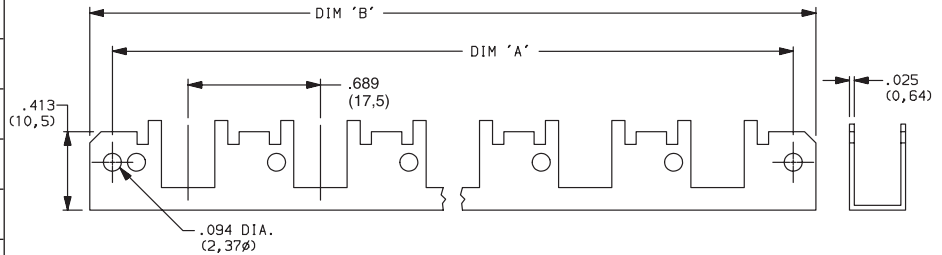
### 15 15mm

No. of Stations	Dim. 'A'	Dim. 'B'	Tolerance
2	1.374 (34,90)	1.615 (41,02)	0.005
3	1.969 (50,01)	2.205 (56,01)	0.010
4	2.560 (65,02)	2.796 (71,02)	0.010
5	3.150 (80,01)	3.386 (86,00)	0.010
6	3.741 (95,02)	3.977 (101,02)	0.015
7	4.332 (110,03)	4.568 (116,03)	0.015
8	4.922 (125,02)	5.158 (131,01)	0.015
9	5.513 (140,03)	5.749 (146,02)	0.015
10	6.103 (155,02)	6.339 (161,01)	0.015



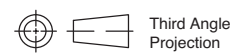
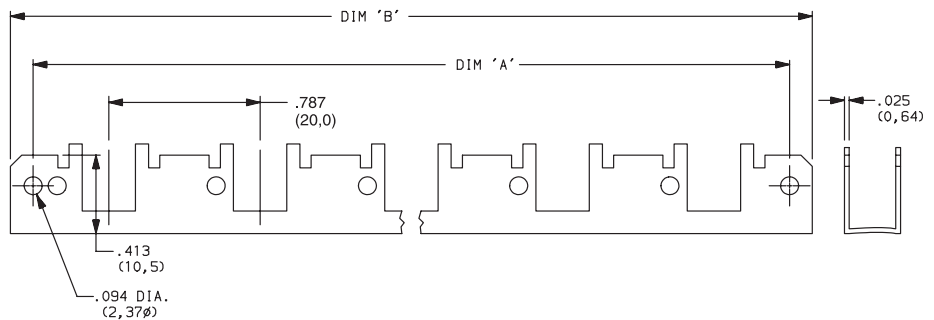
### 17.5 17.5mm

No. of Stations	Dim. 'A'	Dim. 'B'	Tolerance
2	1.477 (37,52)	1.713 (43,51)	0.005
3	2.166 (55,02)	2.402 (61,01)	0.010
4	2.855 (75,52)	3.091 (78,51)	0.010
5	3.544 (90,02)	3.780 (96,01)	0.010
6	4.233 (107,52)	4.469 (113,51)	0.015
7	4.922 (125,02)	5.158 (131,01)	0.015
8	5.611 (142,52)	5.847 (148,51)	0.015
9	6.300 (160,02)	6.536 (166,01)	0.015
10	6.989 (177,52)	7.225 (183,52)	0.015



### 20 20mm

No. of Stations	Dim. 'A'	Dim. 'B'	Tolerance
2	1.575 (40,01)	1.811 (46,00)	0.005
3	2.363 (60,02)	2.599 (66,01)	0.010
4	3.150 (80,01)	3.386 (86,00)	0.010
5	3.938 (100,03)	4.174 (106,02)	0.010
6	4.725 (120,02)	4.961 (126,01)	0.015
7	5.512 (140,00)	5.748 (146,00)	0.015
8	6.300 (160,02)	6.536 (166,01)	0.015
9	7.087 (180,01)	7.323 (186,00)	0.015
10	7.875 (200,03)	8.111 (206,02)	0.015



Third Angle Projection



29 may 19

Dimensions are shown: Inches (mm)  
Specifications and dimensions subject to change

# Mouser Electronics

Authorized Distributor

Click to View Pricing, Inventory, Delivery & Lifecycle Information:

## C&K Switches:

[F07-01](#) [F1904](#) [F15-02](#) [F8UOA](#) [F6UOATB](#) [F4UOATBAU](#) [FLT 2U EE 01A](#) [FLT 4U EE 01A](#) [SF4UEE](#) [SF 2U OA](#)  
[FMRBK](#) [F2UEETB](#) [F0UOACUTREAR](#) [F2UOASPTB](#) [F050101OPQ](#) [C0715](#) [C0420](#) [C0710](#) [F110101OPQ](#) [F4UEETB](#)  
[F2UOATB](#) [F4UEEAU](#) [ZFafa200BKOG2UEE](#) [FLT4UOATB](#) [F2U0ATBAU](#) [SF4U0A](#) [F2UOATB01AM](#)  
[F4UOATB01AM](#) [F6UOATB01AM](#) [F2UOAAU](#) [F/LT2UOA](#) [F0UAORCUTREAR](#) [F10UOA](#) [F10UOATB](#)  
[F2UOATB01AMBB](#) [F4UOATB01AMBB](#) [F6UOAAU](#) [F6UOASP](#) [F6UOATB01AMBB](#) [F8UOASP](#) [FA201BKOG](#)  
[FLT4UOA](#) [FLT6UOA](#) [LENSFA110BLK/OPQ](#) [LENSFSR/CSRORG](#) [CHASFA1XLEFTINDHOLDONLY](#)  
[RELBARF5X10MODFORLASTSTA](#) [SHELLFRVBLKW/OINSERTMOLD](#) [STAPLEFEE810POLE&NE18EXCEPT130238](#)