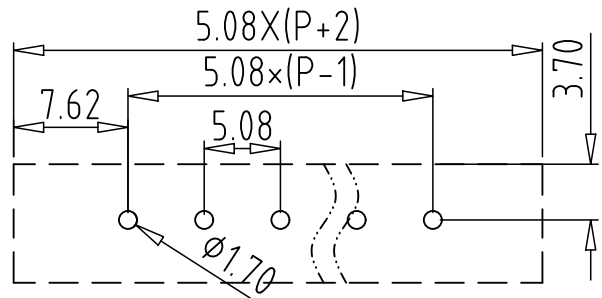
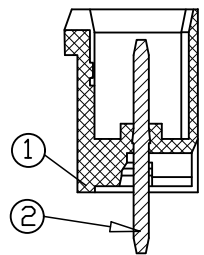


REV	CONTENT	CHK	DATE
VO.0	CONTENT	YL	22.11.19



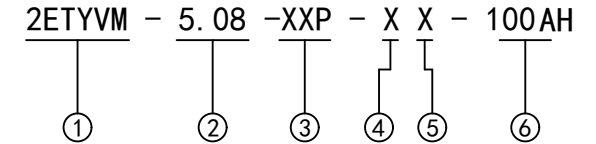
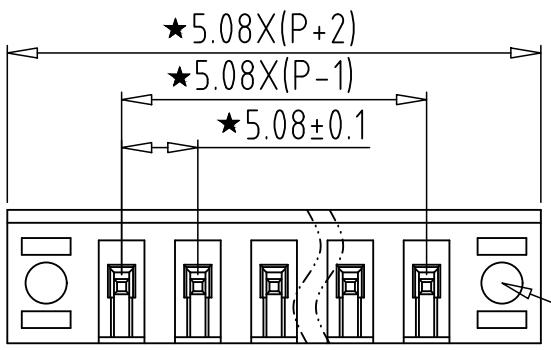
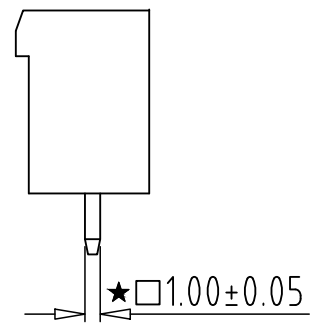
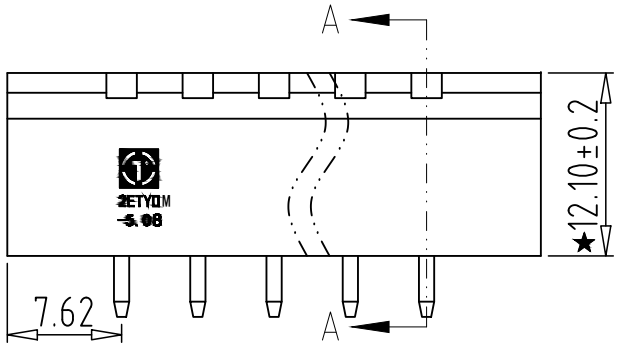
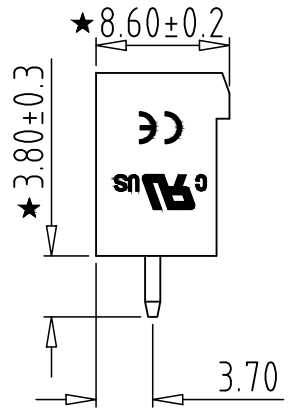
PCB Layout



SECTION A-A

Electrical :

- |  |               |      |
|--|---------------|------|
|  | UL            | IEC  |
| 1. Rated Voltage :                       | 300V          | 320V |
| 2. Rated Current :                       | 15A           | 20A  |
| 3. Withstanding Voltage :                | AC1600V/1Min. |      |
| 4. Operating Temperature :               | -40°C~+105°C  |      |
| 5. RoHS Compliance                       |               |      |
| 6. Safty Approval :                      | cULus CE      |      |
| 7. "★" is the key quality control point. |               |      |



- ① Series No.
- ② Pitch
- ③ Poles
  - 02 02Contacts
  - 03 03Contacts
  - ... 24 24Contacts
- ④ 1 Single Pitch  
2 Double Pitch
- ⑤ Color: 1 Grey  
2 Blue  
3 Black  
4 Green  
5 Orange  
6 Red  
7 Transparent  
8 Yellow  
9 White
- ⑥ Customer Request: 100--Standard

3	NUT	XX	2	BRASS	--
2	PIN	XX	P	BRASS	Tin Plated
1	HOUSING	XX	1	PA66 UL94V-0	SEE NOTE
ITEM	NAME OF PART	NO. OF PART	Q'TY	MATERIAL	NOTE
DWG.	YL	DATE	22.11.19	SIZE	A4 UNITS mm SHEET/OF 1 / 1
CHK.	DATE		SCALE	1:1	
APP.	DATE		NAME 2ETYVM-5.08-XXP-XX-100AH		
拓宜(上海)工控电器设备有限公司 Topone (Shanghai) Industrial Control Electrical Equipment Co., LTD.			DWGNO.	XXXXX	

Total Pitch Tolerances in mm									Nominal dimension range in mm									⊥	=	-	//			
over	over	over	over	over	over	over	over	over	over	over	over	over	over	over	over	over	over	over	0	10	all	0	100	over
0	30	53	70	90	115	150	250	350	0	30	53	70	90	115	150	200	250	0	10	all	0	100	150	
to	to	to	to	to	to	to	to	to	to	to	to	to	to	to	to	to	to	to	to	to	to	to	to	
30	53	70	90	115	150	250	350	500	30	53	70	90	115	150	200	250	320	10	100	150	100	150	150	
±0.18	±0.20	±0.25	±0.3	±0.35	±0.44	±0.60	±0.70	±0.85	±0.20	±0.25	±0.30	±0.35	±0.44	±0.55	±0.70	±0.80	±0.90	0.2	0.3	0.3	0.2	0.3	0.5	