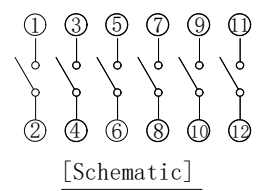
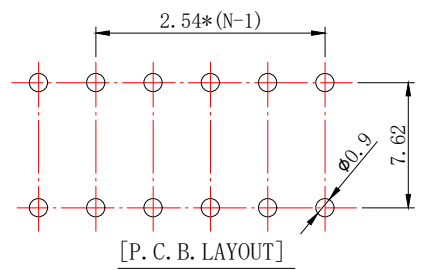
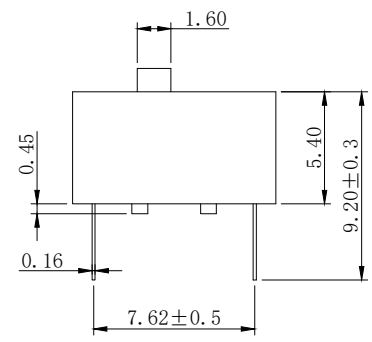
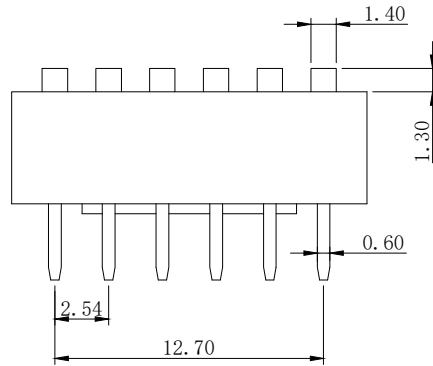
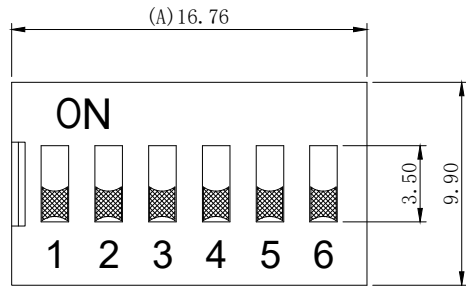


ROHS compliant

REV.	ECN NO.	DRAWN	DATE



NOTES:

1.MECHANICAL:

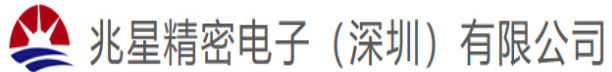
- 1>.Operation force: 1000gf Max.
- 2>.Operation Temperature: -30°C to +85°C.
- 3>.Storage Temperature: -40°C to +85°C.
- 4>.Mechanical Life: 3000 cycles operations.
- 5>.Resistance to Soldering: 260±5°C for 3-5 Seconds.
- 6>.Please keep switch in "OFF" when welding.

2.MATERIAL:

- 1>.Base: UL94V-0 PBT Thermoplastic / Color:Black.
- 2>.COVER: UL94V-0 PBT Thermoplastic / Color:Red, Black, Blue.
- 3>.ACTUATOR: UL94V-0 PBT High Thermoplastic / Color: White.
- 4>.TERMINAL: Copper alloy with gold plating for 1.5u".

3.ELECTRICAL:

- 1>.Non-switching Rating:100mA at 50VDC.
- 2>.Switching Rating: 25mA at 24VDC.
- 3>.Contact Resistance: Inital 50mΩ Max.
Contact Resistance: After life 100mΩ Max.
- 4>.Insulation Resistance:100MΩ Min at 500VDC.
- 5>.Dielectric Strength: 500VAC for 60seconds.
- 6>.Switch Capacitance: 5PF Max at 1MHZ.



Drawing		Date	2018.01.20	LINER	ANGLES	DSE 2.54直插平拨红色6位	
Check		Scale	3:1	>0±0.05	>0° ±0.5°	PRAT NO.	ZX-2.54BM-6PZC
Approved		Unit	MM	>1±0.10	>5° ±1.0°	FILE NO.	
Size	A4	Rev.	A	>10±0.30		PROJECTION	