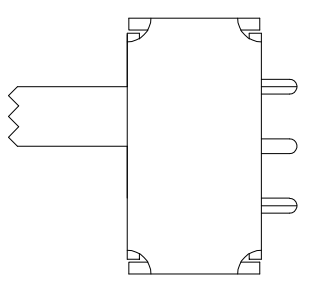


CIRCUIT DIAGRAM

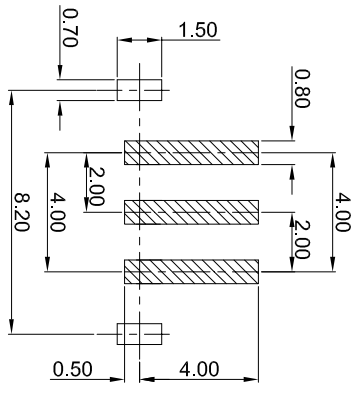
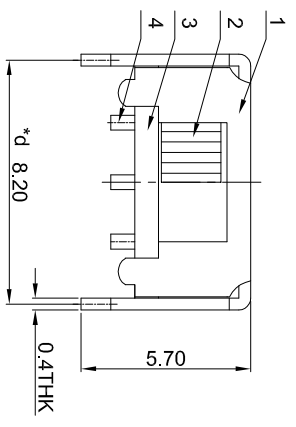
SK-12D15-GXXX

Horizontal
G-Switch P/N



Switch Height (mm)

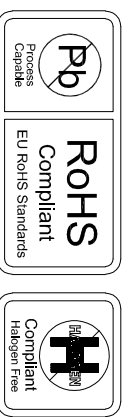
- G020=2.0mm G030=3.0mm
- G040=4.0mm G050=5.0mm
- G060=6.0mm G070=7.0mm
- G080=8.0mm G090=9.0mm
- G100=10.0mm



RECOMMENDED PCB LAYOUT
TOLERANCE:±0.05

Note: "*" represents key dimensions (6)

6	SPRING PLATE	PBS STRIP	1	NATURAL
5	CONTACT CLIP	PBS STRIP	1	Ag CLAD
4	TERMINAL	BRASS STRIP	3	Ag PLATED
3	BASE	PHENOLIC RESIN	1	NATURAL
2	KNOB	PPA	1	BLACK
1	FRAME	STEEL STRIP	1	NI PLATED
NO.	PARTS	MATERIALS	QTY	FINISH



SCALE: 1:1	UNIT: mm	UNIT: mm
SIZE: A4	UNIT: mm	UNIT: mm
Unless otherwise General Tolerance:		
X	±0.40	
X.X	±0.30	
X.XX	±0.20	
X"	±5°	
X.X°	±3°	
Title:	Horizontal Slide Switch	
Model Code:	SK-12D15-GXXX	
DRAWN	CHECKED	APPROVED
Xia	Chen	Chen
DATE	2023.02.01	

- G-Switch Specification:**
1. Operating temperature range: -40°C ~ +85°C
 2. Rating: 0.3A, 50V DC
 3. Insulation resistance: 100MΩ min, 100V DC
 4. Dielectric strength: 250V AC for 1 min
 5. Contact resistance: 100m Ω max.
 6. Terminal arrangement: 1P2T
 7. Travel: 2.0±0.1mm
 8. Switch lifetime: 10,000Cycles



REV: A0 SHEET: 1/1