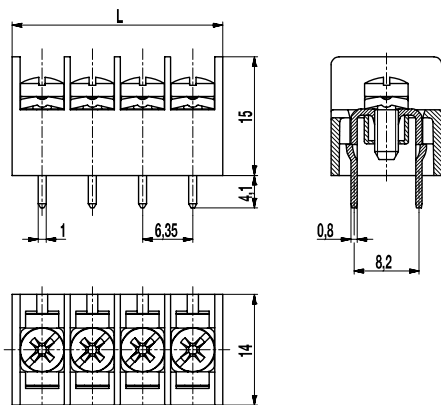


## PCB connector

### 980-D

Screw connection, 2 P.C. pins per pole



The PCB screw connector 980-D in 6.35 mm pitch is available with 2 to 32 poles. In spite of its small dimensions, it features large clearance and creepage distances.

This version is equipped with two solder pins per pole.

The conductor terminal is of head contact design, whereby the screws and square washers are movably connected.

For easier connection, the non-rotably mounted square washers are automatically lifted when the screw is loosened.

### Part Numbers

| No. of poles | 980-D      | Length | Pcs |
|--------------|------------|--------|-----|
| 2            | 20.873.602 | 14,00  | 200 |
| 3            | 20.873.603 | 20,30  | 100 |
| 4            | 20.873.604 | 26,60  | 100 |
| 5            | 20.873.605 | 33,00  | 100 |
| 6            | 20.873.606 | 39,30  | 100 |
| 7            | 20.873.607 | 45,70  | 50  |
| 8            | 20.873.608 | 52,00  | 50  |
| 9            | 20.873.609 | 58,40  | 50  |
| 10           | 20.873.610 | 64,70  | 50  |
| 11           | 20.873.611 | 71,10  | 50  |
| 12           | 20.873.612 | 77,50  | 50  |
| 13           | 20.873.613 | 83,80  | 50  |
| 14           | 20.873.614 | 90,10  | 25  |
| 15           | 20.873.615 | 96,50  | 40  |
| 16           | 20.873.616 | 102,80 | 25  |
| 17           | 20.873.617 | 109,20 | 25  |
| 18           | 20.873.618 | 115,50 | 25  |
| 19           | 20.873.619 | 121,90 | 25  |
| 20           | 20.873.620 | 128,20 | 25  |
| 22           | 20.873.622 | 141,00 | 25  |
| 24           | 20.873.624 | 153,60 | 25  |
| 26           | 20.873.626 | 166,30 | 20  |
| 28           | 20.873.628 | 179,00 | 20  |
| 30           | 20.873.630 | 191,70 | 20  |
| 32           | 20.873.632 | 204,30 | 20  |

further number of poles on request

### General Information

|              |         |
|--------------|---------|
| Pitch        | 6,35 mm |
| No. of poles | 2 - 32  |



### Technical Data

|                          |  |
|--------------------------|--|
| Clamping Range           | <i>solid / flexible / AWG</i><br>0,25 - 1,5 mm <sup>2</sup> / 0,25 - 1 mm <sup>2</sup> / 22 - 18 AWG |
| Rated Cross Section      | 1 mm <sup>2</sup>  |
| Wire Stripping Length    | 6 mm   |
| Overvoltage Category     | III  |
| Pollution Severity Level | 3  |
| Rated Voltage            | 320 V  |
| Rated Impulse Voltage    | 4 kV   |
| Rated Insulation Voltage | 250 V acc. to EN 60998-1   |
| Rated Current            | 13,5 A   |
| Hole in PCB              | ø 1,6 mm   |
| Torque                   | 0,5 Nm   |
| Other specifications     | Two wires with same cross section can be connected per pole.   |

### Material

|                            |  |
|----------------------------|--|
| Moulding                   | PA, grey, V-0                          |
| Comparative Tracking Index | CTI ≥ 600                              |
| Insulating Group           | I                                      |
| Temperature Range          | -40°C up to 100°C                      |
| Pressure clamp             | Tin plated brass                       |
| Screw                      | M3; zinc plated steel, blue passivated |
| Solder pin                 | 0,8 x 1,0 mm; tin plated brass         |

### Approvals

|   | Current | Voltage | Group   | AWG     | Nm   |
|---|---------|---------|---------|---------|------|
|  | 7       | 300     | B       | 22 - 18 | 0,51 |
|   | 7       | 150     | C       | 22 - 18 | 0,51 |
|  | 7       | 300     | B, D, E | 22 - 18 | 0,51 |

### Options / Accessories

- Consecutive numbering
- Special marking according to drawing
- Crosshead screws
- Cover cap 980-A
- Securing pins BEF-980