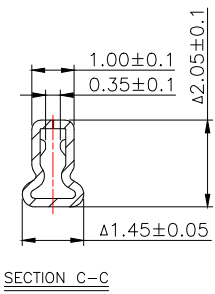
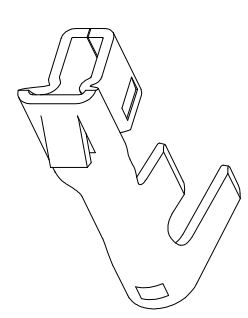
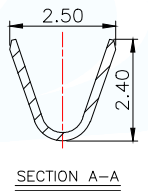
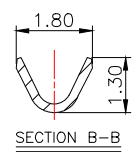


料带图 比例:1:2



技术要求Specification:

- 1、材质:磷青铜,表面镀锡
Material:Phos.Bronze Tin-Plated
- 2、适用线规Applicable wire:AWG#30-#24;
- 3、零件外观不得有有害毛刺,尖角,锐边和机械损伤;表面镀层应均匀,光亮,无雾斑,剥层等缺陷;

Parts may not have the appearance of harmful burrs,sharp corners,sharp edges and mechanical damage,surface coatings should be uniform, bright,no fog spots,delamination and other defects.

MANUFACTURE DWG			 东莞市讯普电子科技有限公司 DongGuan XunPu Electronics Co.,Ltd	
UNLESS OTHERWISE SPECIFIED TOLERANCES			TITLE: PH2.0MM TERMINAL	
DECIMALS:	ANGLES:	PAR	WAFAER-PH2.0-DZ	
.X±0.30	X.*±1°	DWN		
.XX±0.20		CHKD		
.XXX±0.10		APVD		
		SCALE 1:1	UNIT:MM	⊕
		CUSTOMER COPY	SIZE:A4	SHEET:1F1
				REV:A