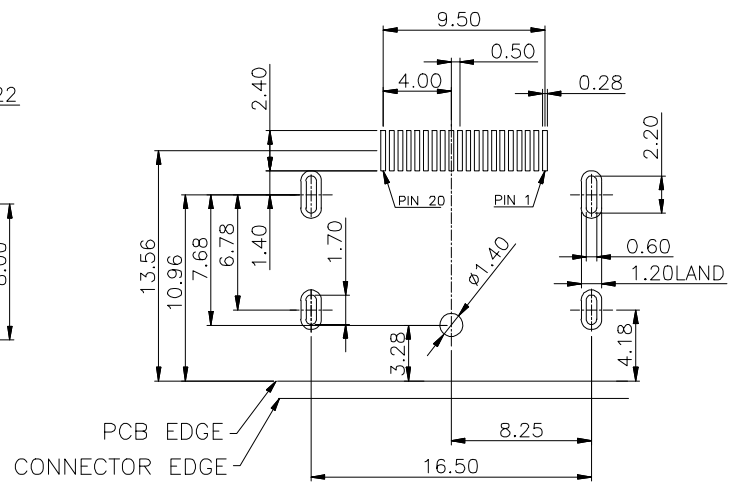
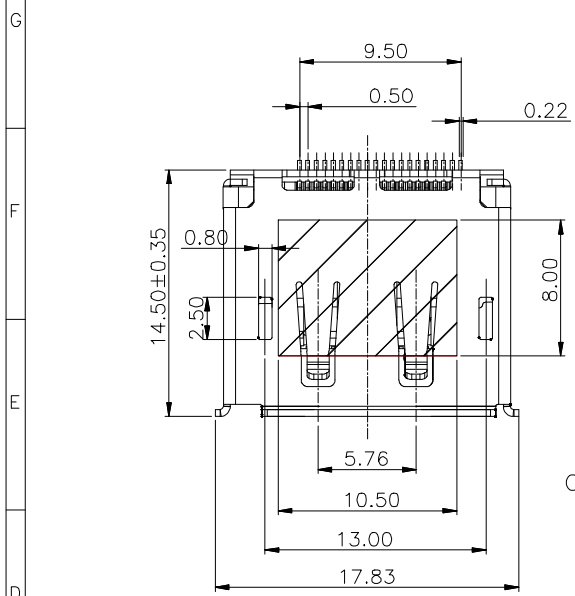
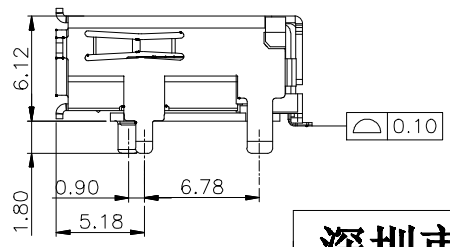
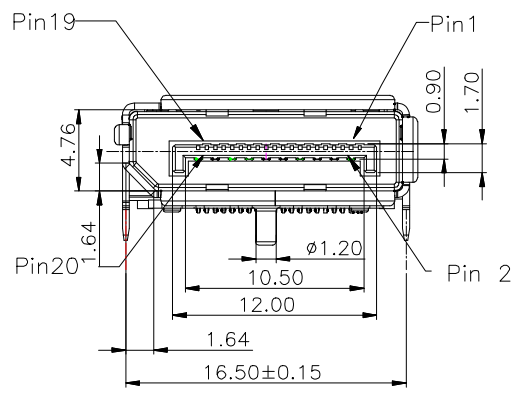


REV.	DESCRIPTION	CHANGED	ECN/NO.	DATE
AO	NEW ISSUE			2012/8/1

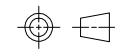


RECOMMENDED P.C.B. LAYOUT (T=1.6)  
TOLERANCE : ±0.05mm

- NOTE:
- MATERIAL:
    - INSULATOR:ENGINEERING THERMOPLASTIC, DARK-GREY
    - CONTACT : COPPER ALLOY C2680-H T=0.20MM
    - SHELL:C2680 T=0.40
  - PLATING:
    - CONTACT: 1U" GOLD PLATED ON CONTACT AREA  
100u" Min. MATTE TIN PLATED ON SOLDER TAIL  
50u" Min. NICKEL UNDER-PLATED
    - SHELL:50u" Min. NICKEL PLATED OVERALL
  - CHARACTERISTICS:
    - ELECTRICAL CHARACTERISTICS;  
CONTACT RESISTANCE:30mΩ MAXIMUM  
CONTACT CURRENT RATING:0.5A  
DIELECTRIC WITHSTANDING VOLTAGE:500 V R.M.S.  
INSULATION RESISTANCE 100 MEGOHMS MIN  
OPERATING TEMPERATURE:-25°C ~ +85°C
    - MECHANICAL:  
MATING FORCE: 4.5Kg.Max.  
UNMATING FORCE: 1.0-4.0Kg.



## 深圳市连欣科技有限公司



公差参考表		产品名称	DISPLAYPORT 20P FEMALE SMT外壳插板						
X	±0.35	ANGLE	产品编号	XDPF-0205-20S					
X.X	±0.25	X° ±2°	核准	版本	AO	单位	MM		
X.XX	±0.15	X.X° ±1.0°	审核	单重	比例				
X.XXX	±0.050	X.XX° ±0.50°	制图	周册	模具编号	060.DPPF.003	页数	1/1	