

## 3.8 x 8.0 x 2.5 mm SMD Package

### Feature

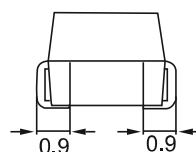
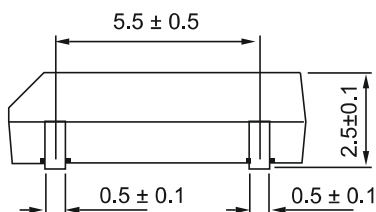
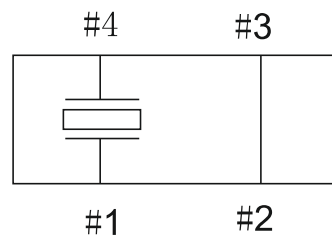
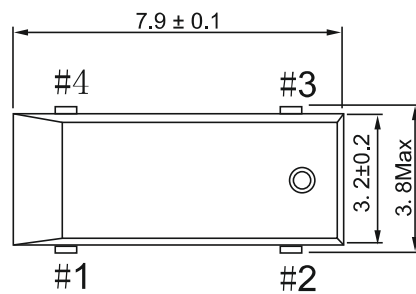
- Wide frequency range
- Designed for automatic mounting and reflow soldering
- Higher frequency available and lower equivalent series resistance
- RoHS Compliant / Pb Free



### Electrical Specifications

Item	Specifications
Frequency Range (kHz)	30~40   40~60   60~70   70~200   200~350
Load Capacitance (CL)	6~12.5pF, or specify
Frequency Tolerance( at 25°C )	±5ppm ~ ±100ppm
Operating emperature Range	-10~+60°C, -20~+70°C, -40~+85°C or specify
Turnover Temperature	25 ± 5°C
Frequency Temperature Curve	$(-0.034 \pm 10\%) \times 10^{-6} / \pm^2$
Equivalent Series Resistance (ESR) Max.	40kΩ   30kΩ   25kΩ   22kΩ   20kΩ
Drive Level (Typical)	0.1μW
Drive Level(Max)	1μW
Shunt Capacitance ( C <sub>0</sub> )	2.0pF Typ.
Insulation esistance	More than 500Mohms at DC100V
Storage Temperature Range	-55°C~+125°C
Aging @25 °C 1st Year (Max)	±3ppm/year, ±5 ppm/year,

### Dimension(mm)



#### SOLDER PATTERN

