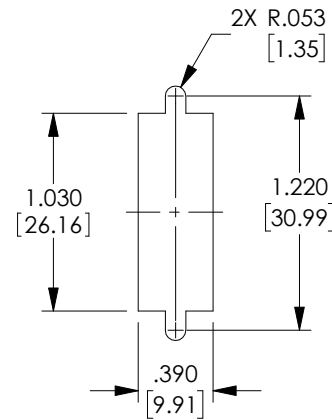
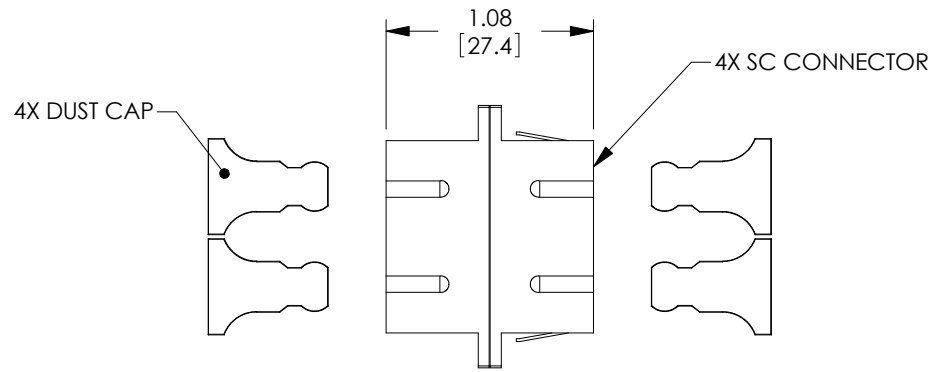
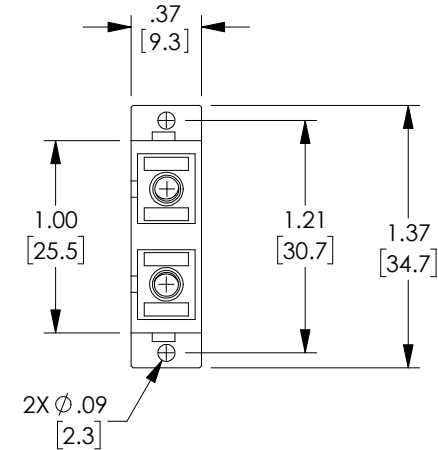


THE INFORMATION CONTAINED IN THIS DRAWING IS THE SOLE PROPERTY OF L-COM, INC. ANY REPRODUCTION IN PART OR WHOLE WITHOUT THE WRITTEN PERMISSION OF L-COM, INC. IS PROHIBITED.

REVISIONS			
REV	DESCRIPTION	DATE	APPROVED
A	INITIAL RELEASE	08/07/2020	PHOSPODAR
B	ECN 11212 REMOVE COLOR FROM DUST CAP NOTE	07/16/2021	PHOSPODAR



RECOMMENDED
PANEL CUTOUT



NOTES:


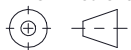
MATERIALS:
SLEEVE: BRONZE
BODY: ABS THERMOPLASTIC, BLACK
DUST CAP: ENGINEERING PLASTIC
MOUNTING CLIPS: STAINLESS STEEL



RECOMMENDED PANEL THICKNESS: .06" [1.5]

ALL DIMENSIONS ARE FOR REFERENCE ONLY.

COMPONENT SHALL BE INDIVIDUALLY PACKAGED IN ACCORDANCE WITH L-COM SPECIFICATION PS-0031.

UNLESS OTHERWISE SPECIFIED, DIMENSIONS ARE IN INCHES [mm]		APPROVALS		DATE		<div> an INFINITI® brand</div> <div>50 High Street, West Mill, North Andover, MA 01845 USA. Phone: 1.800.341.5266 1.978.682.6936</div>
OVERALL CABLE LENGTH TOLERANCE: ≤12 [305] = +1 [25] / -0 >12 [305] ≤60 [1524] = +2 [51] / -0 >60 [1524] ≤120 [3048] = +4 [102] / -0 >120 [3048] ≤300 [7620] = +6 [152] / -0 >300 [7620] = +5% / -0		DRAWN BY DFRISIELLO		06/22/2020		
ALL OTHER DIMENSIONAL TOLERANCES: .X = ± .2 [5] FRACTIONS .XX = ± .02 [.5] ± 1/32 .XXX = ± .005 [.13] ANGLES ± 1°		CHECKED BY PHOSPODAR		08/07/2020		
		APPROVED BY PHOSPODAR		08/07/2020		
		CONFIGURATION DETAILS OF UNDIMENSIONED FEATURES MAY VARY		CATEGORY <div>FIBER OPTICS</div>		PRODUCT DESCRIPTION <div>SC Duplex Multimode Coupler, Flange, Black</div>
THIRD-ANGLE PROJECTION <div></div>		COLOR VARIATIONS MAY OCCUR		SIZE A		
				CAGE CODE 43321		
				ITEM NO. FOA-914F		REV. B
				SCALE: NONE		CAD FILE: FOA-914F.SLDDRW
						SHEET 1 OF 1