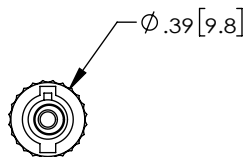
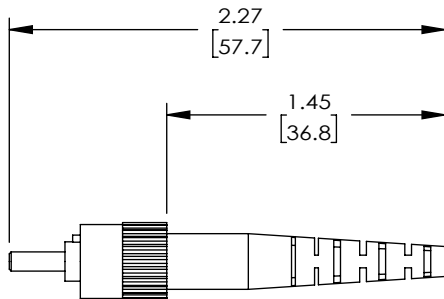
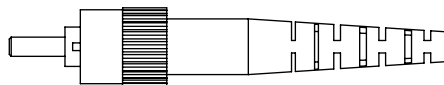




THE INFORMATION CONTAINED IN THIS DRAWING IS THE SOLE  
PROPERTY OF L-COM, INC. ANY REPRODUCTION IN PART OR WHOLE  
WITHOUT THE WRITTEN PERMISSION OF L-COM, INC. IS PROHIBITED.

REVISIONS			
REV	DESCRIPTION	DATE	APPROVED
A	INITIAL RELEASE	11/02/2021	S.XU



#### NOTES:

1. ALL DIMENSIONS ARE FOR REFERENCE ONLY.
2. ST CONNECTOR ASSEMBLY POLISH TYPE: PC
3. ALL CONNECTORS ACCOMPANIED WITH A DUST CAP INSTALLED (NOT SHOWN).
4. COMPONENT ASSEMBLY SHALL BE INDIVIDUALLY PACKAGED IN ACCORDANCE WITH L-COM SPECIFICATION PS-0031.

UNLESS OTHERWISE SPECIFIED, DIMENSIONS ARE IN INCHES [mm]		APPROVALS		DATE		 an INFINITE® brand		50 High Street, West Mill, North Andover, MA 01845 USA. Phone: 1.800.341.5266 1.978.682.6936							
OVERALL CABLE LENGTH TOLERANCE:  ≤12 [305] = +1 [25] / -0 >12 [305] ≤60 [1524] = +2 [51] / -0 >60 [1524] ≤120 [3048] = +4 [102] / -0 >120 [3048] ≤300 [7620] = +6 [152] / -0 >300 [7620] = +5% / -0		DRAWN BY SLI		09/16/2021											
		CHECKED BY S.XU		09/16/2021											
		APPROVED BY S.XU		09/16/2021											
ALL OTHER DIMENSIONAL TOLERANCES:  .X = ± .2 [5]      FRACTIONS .XX = ± .02 [.5]      ± 1/32 .XXX = ± .005 [.13]      ANGLES ± 1°		CONFIGURATION DETAILS OF UNDIMENSIONED FEATURES MAY VARY		PRODUCT DESCRIPTION  ST SM economy simplex connector for 1.6mm cable											
				THIRD-ANGLE PROJECTION		COLOR VARIATIONS MAY OCCUR		SIZE <b>A</b>		CAGE CODE <b>43321</b>		DWG. NO. <b>FOC-STSM-V-S16</b>		REV. <b>A</b>	
								SCALE: NONE		CAD FILE: FOC-STSM-V-S16.SLDDRW		SHEET 1 OF 1			