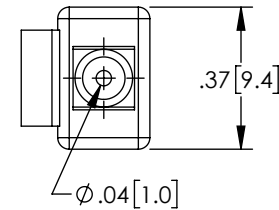
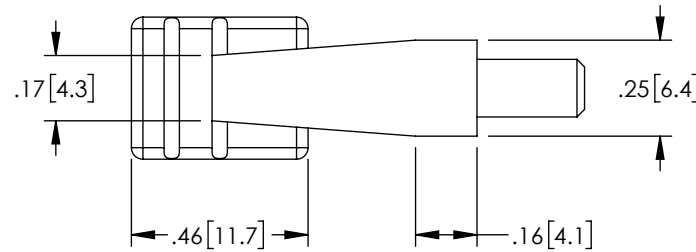
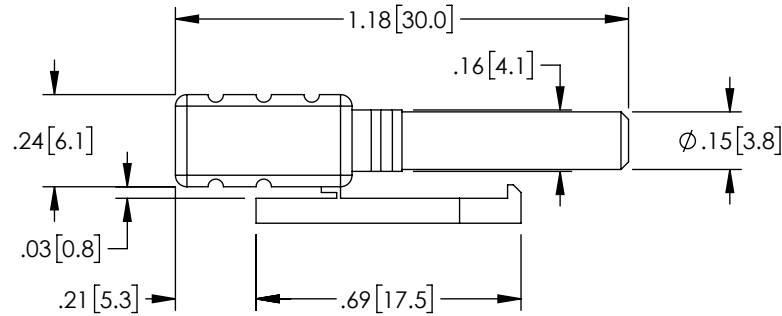


THE INFORMATION CONTAINED IN THIS DRAWING IS THE SOLE  
PROPERTY OF L-COM, INC. ANY REPRODUCTION IN PART OR WHOLE  
WITHOUT THE WRITTEN PERMISSION OF L-COM, INC. IS PROHIBITED.


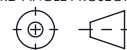
REVISIONS			
REV	DESCRIPTION	DATE	APPROVED
A	INITIAL RELEASE	05/20/2021	PHOSPODAR



#### NOTES:

1. ALL DIMENSIONS ARE FOR REFERENCE ONLY.
2. INDIVIDUALLY PACKAGE EACH ASSEMBLY  
IN ACCORDANCE WITH L-COM SPECIFICATION PS-0031.

**REGULATORY COMPLIANCE:**  
EU ROHS DIRECTIVE (MOST RECENT RELEASED VERSION)

UNLESS OTHERWISE SPECIFIED, DIMENSIONS ARE IN INCHES [mm]		APPROVALS		DATE		<div> an INFINITI® brand</div> <div>50 High Street, West Mill, North Andover, MA 01845 USA. Phone: 1.800.341.5266 1.978.682.6936</div>	
OVERALL CABLE LENGTH TOLERANCE: ≤12 [305] = +1 [25] / -0 >12 [305] ≤60 [1524] = +2 [51] / -0 >60 [1524] ≤120 [3048] = +4 [102] / -0 >120 [3048] ≤300 [7620] = +6 [152] / -0 >300 [7620] = +5% / -0		DRAWN BY DZINN		05/20/2021			
ALL OTHER DIMENSIONAL TOLERANCES: .X = ± .2 [5]      FRACTIONS ± 1/32 .XX = ± .02 [.5]      ANGLES ± 1° .XXX = ± .005 [.13]		CHECKED BY DFRISIELLO		05/20/2021			
		APPROVED BY PHOSPODAR		05/20/2021			
		CONFIGURATION DETAILS OF UNDIMENSIONED FEATURES MAY VARY		CATEGORY FIBER OPTIC		PRODUCT DESCRIPTION Versatile Link, Simplex, Latching, Clamshell, 1.0 x 2.2mm, Black	
THIRD-ANGLE PROJECTION 		COLOR VARIATIONS MAY OCCUR		SIZE <b>A</b>	CAGE CODE <b>43321</b>	ITEM NO. FOCOVLSLCB-1.0x2.2	REV. <b>A</b>
				SCALE: NONE		CAD FILE: FOCOVLSCB-1.0x2.2.SLDDRW	SHEET 1 OF 1