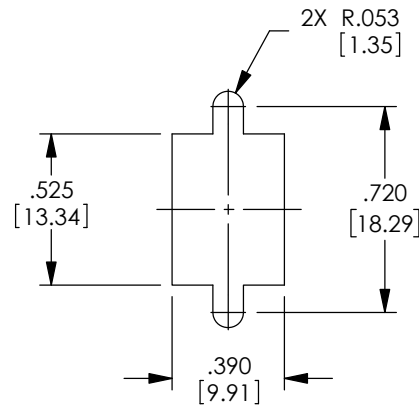
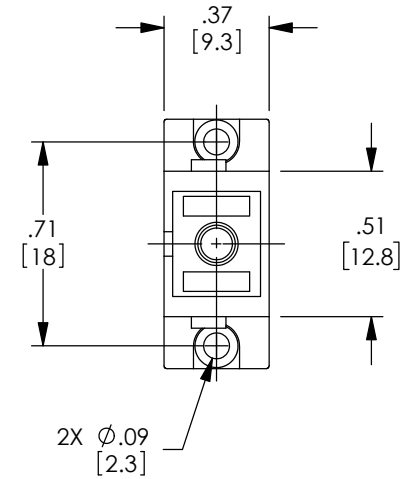
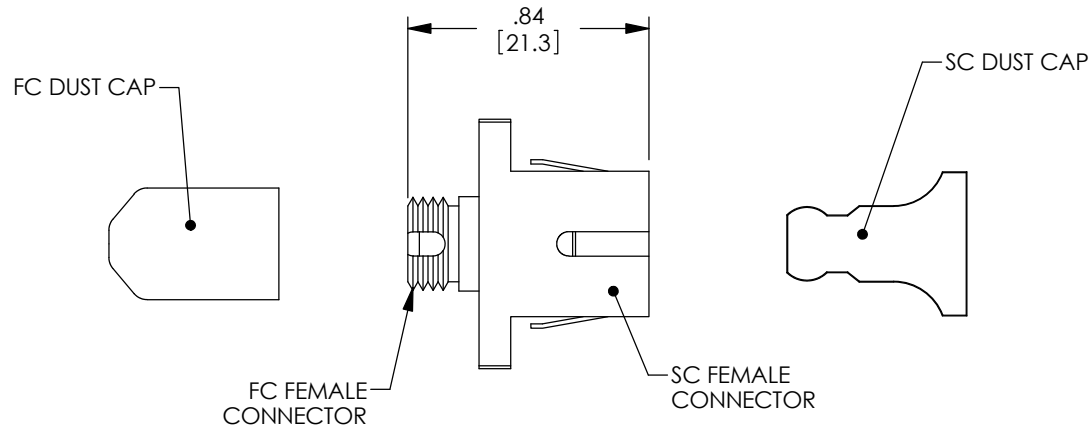


THE INFORMATION CONTAINED IN THIS DRAWING IS THE SOLE
PROPERTY OF L-COM, INC. ANY REPRODUCTION IN PART OR WHOLE
WITHOUT THE WRITTEN PERMISSION OF L-COM, INC. IS PROHIBITED.

REVISIONS			
REV	DESCRIPTION	DATE	APPROVED
A	INITIAL RELEASE	08/11/2020	PHOSPODAR



RECOMMENDED
PANEL CUTOUT

NOTES:

MATERIALS:

BODY: ZINC ALLOY, NICKEL PLATED
SLEEVE: ZIRCONIA
FC DUST CAP: VINYL, GREEN
SC DUST CAP: ENGINEERING PLASTIC, GREEN
MOUNTING CLIP: STAINLESS STEEL


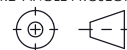
FC CONNECTOR ASSEMBLY POLISH TYPE: APC
SC CONNECTOR ASSEMBLY POLISH TYPE: APC

RECOMMENDED PANEL THICKNESS: .06" [1.5]

ALL DIMENSIONS ARE FOR REFERENCE ONLY.

SHIPPED WITH DUST CAPS INSTALLED.

COMPONENT SHALL BE INDIVIDUALLY PACKAGED IN
ACCORDANCE WITH L-COM SPECIFICATION PS-0031.

UNLESS OTHERWISE SPECIFIED, DIMENSIONS ARE IN INCHES [mm]		APPROVALS		DATE		 an INFINITI® brand		50 High Street, West Mill, North Andover, MA 01845 USA. Phone: 1.800.341.5266 1.978.682.6936			
OVERALL CABLE LENGTH TOLERANCE: ≤12 [305] = +1 [25] / -0 >12 [305] ≤60 [1524] = +2 [51] / -0 >60 [1524] ≤120 [3048] = +4 [102] / -0 >120 [3048] ≤300 [7620] = +6 [152] / -0 >300 [7620] = +5% / -0		DRAWN BY DFRISIELLO		08/11/2020		CATEGORY FIBER OPTICS		A			
		CHECKED BY PHOSPODAR		08/11/2020							
		APPROVED BY PHOSPODAR		08/11/2020							
ALL OTHER DIMENSIONAL TOLERANCES: .X = ± .2 [5] FRACTIONS .XX = ± .02 [.5] ± 1/32 .XXX = ± .005 [.13] ANGLES ± 1°		CONFIGURATION DETAILS OF UNDIMENSIONED FEATURES MAY VARY				PRODUCT DESCRIPTION FC/APC Female to SC/APC Female Single Mode Adapter, Rectangular Flange, Green					
THIRD-ANGLE PROJECTION 		COLOR VARIATIONS MAY OCCUR				SIZE A	CAGE CODE 43321	ITEM NO. FOA-SM-FCAFSCAF-R	REV. A		
						SCALE: NONE		CAD FILE: FOA-SM-FCAFSCAF-R.SLDDRW		SHEET 1 OF 1	