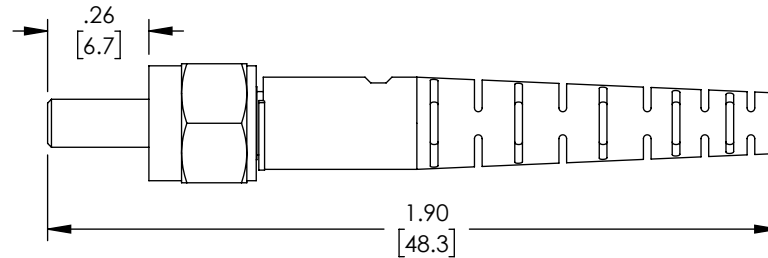
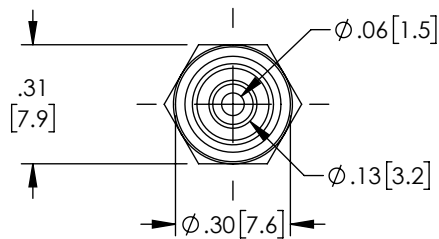
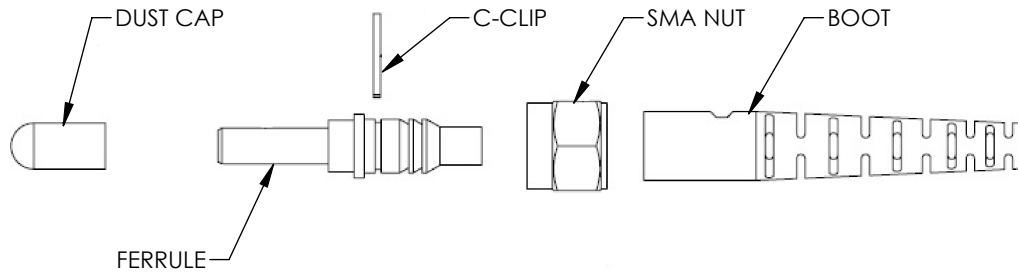


THE INFORMATION CONTAINED IN THIS DRAWING IS THE SOLE
PROPERTY OF L-COM, INC. ANY REPRODUCTION IN PART OR WHOLE
WITHOUT THE WRITTEN PERMISSION OF L-COM, INC. IS PROHIBITED.

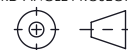
REVISIONS			
REV	DESCRIPTION	DATE	APPROVED
A	INITIAL RELEASE	05/17/2021	PHOSPODAR



NOTES:

1. ALL DIMENSIONS FOR REFERENCE ONLY.
2. INDIVIDUALLY PACKAGE EACH ASSEMBLY
IN ACCORDANCE WITH L-COM SPECIFICATION PS-0031.

REGULATORY COMPLIANCE:
EU ROHS DIRECTIVE (MOST RECENT RELEASED VERSION)

UNLESS OTHERWISE SPECIFIED, DIMENSIONS ARE IN INCHES [mm]		APPROVALS		DATE		<div><div>L-com[™]</div><div>an INFINITO[®] brand</div></div> <div>50 High Street, West Mill, North Andover, MA 01845 USA. Phone: 1.800.341.5266 1.978.682.6936</div>	
OVERALL CABLE LENGTH TOLERANCE: ≤12 [305] = +1 [25] / -0 >12 [305] ≤60 [1524] = +2 [51] / -0 >60 [1524] ≤120 [3048] = +4 [102] / -0 >120 [3048] ≤300 [7620] = +6 [152] / -0 >300 [7620] = +5% / -0		DRAWN BY DZINN		05/17/2021			
ALL OTHER DIMENSIONAL TOLERANCES: .X = ± .2 [5] FRACTIONS ± 1/32 .XX = ± .02 [.5] ANGLES ± 1° .XXX = ± .005 [.13]		CHECKED BY DFRISIELLO		05/17/2021			
		APPROVED BY PHOSPODAR		05/17/2021			
THIRD-ANGLE PROJECTION 		CONFIGURATION DETAILS OF UNDIMENSIONED FEATURES MAY VARY		PRODUCT DESCRIPTION Connector, SMA 905, Aluminum Ferrule, 1.5 x 2.2mm		CATEGORY FIBER OPTIC	
COLOR VARIATIONS MAY OCCUR		SIZE A		CAGE CODE 43321		ITEM NO. FOCOSMAAL-1.5X2.2	
		SCALE: NONE		CAD FILE: FOCOSMAAL-1.5X2.2.SLDDRW		SHEET 1 OF 1	
						REV. A	