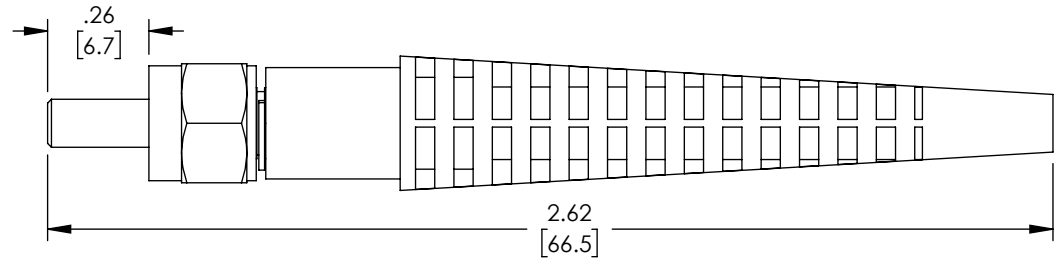
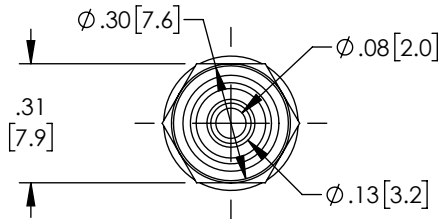
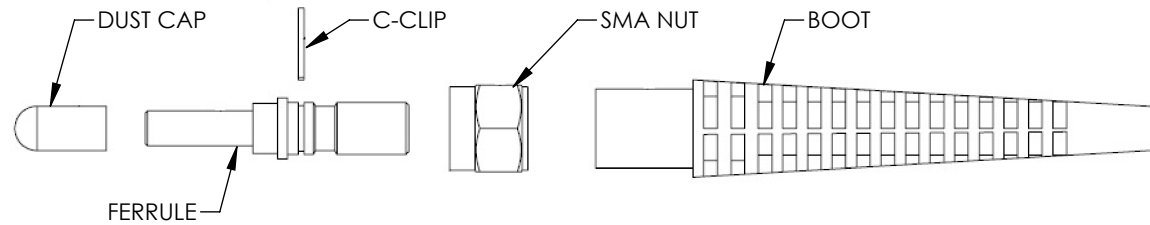


THE INFORMATION CONTAINED IN THIS DRAWING IS THE SOLE
PROPERTY OF L-COM, INC. ANY REPRODUCTION IN PART OR WHOLE
WITHOUT THE WRITTEN PERMISSION OF L-COM, INC. IS PROHIBITED.

REVISIONS			
REV	DESCRIPTION	DATE	APPROVED
A	INITIAL RELEASE	05/17/2021	PHOSPODAR

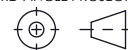


NOTES:

1. ALL DIMENSIONS FOR REFERENCE ONLY.
2. INDIVIDUALLY PACKAGE EACH ASSEMBLY
IN ACCORDANCE WITH L-COM SPECIFICATION PS-0031.

REGULATORY COMPLIANCE:

EU ROHS DIRECTIVE (MOST RECENT RELEASED VERSION)

UNLESS OTHERWISE SPECIFIED, DIMENSIONS ARE IN INCHES [mm]		APPROVALS		DATE		<div>L-com[™] an INFINITI® brand</div>		50 High Street, West Mill, North Andover, MA 01845 USA. Phone: 1.800.341.5266 1.978.682.6936	
OVERALL CABLE LENGTH TOLERANCE: ≤12 [305] = +1 [25] / -0 >12 [305] ≤60 [1524] = +2 [51] / -0 >60 [1524] ≤120 [3048] = +4 [102] / -0 >120 [3048] ≤300 [7620] = +6 [152] / -0 >300 [7620] = +5% / -0		DRAWN BY DZINN		05/17/2021		CATEGORY FIBER OPTIC			
		CHECKED BY DFRISIELLO		05/17/2021					
		APPROVED BY PHOSPODAR		05/17/2021					
ALL OTHER DIMENSIONAL TOLERANCES: .X = ± .2 [5] FRACTIONS .XX = ± .02 [.5] ± 1/32 .XXX = ± .005 [.13] ANGLES ± 1°		CONFIGURATION DETAILS OF UNDIMENSIONED FEATURES MAY VARY		PRODUCT DESCRIPTION Connector, SMA 905, Aluminum Ferrule, 2.0 x 3.0mm					
THIRD-ANGLE PROJECTION 		COLOR VARIATIONS MAY OCCUR		SIZE A	CAGE CODE 43321	ITEM NO. FOCOSMAAL-2.0X3.0		REV. A	
				SCALE: NONE		CAD FILE: FOCOSMAAL-2.0X3.0.SLDDRW		SHEET 1 OF 1	