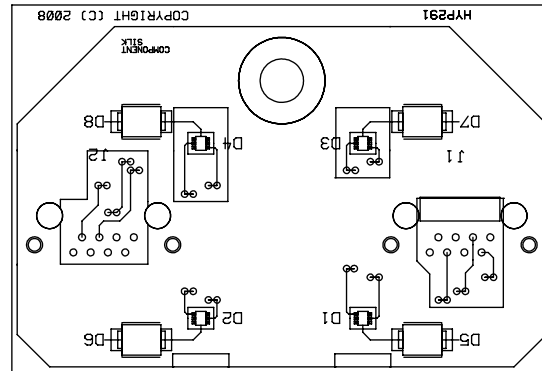
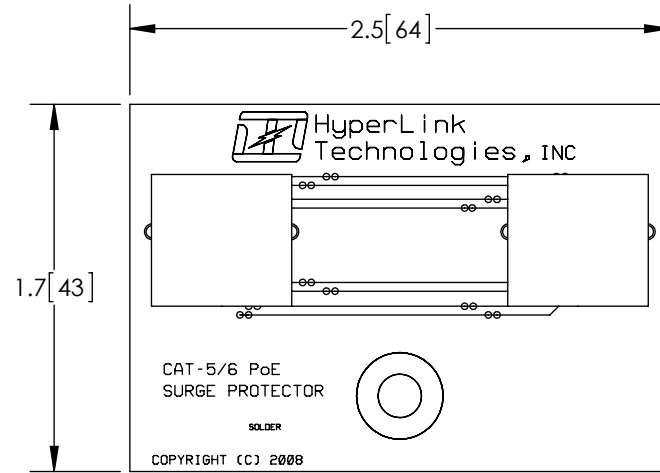


THE INFORMATION CONTAINED IN THIS DRAWING IS THE SOLE
PROPERTY OF L-COM, INC., ANY REPRODUCTION IN PART OR WHOLE
WITHOUT THE WRITTEN PERMISSION OF L-COM, INC. IS PROHIBITED.

REVISIONS			
REV	DESCRIPTION	DATE	APPROVED
A	INITIAL RELEASE	08/22/13	D.GRIFFIN



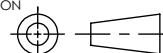
NOTES:
1- ALL PARTS SHALL BE PACKAGED AS PER L-COM SPEC PKG-00012
- ALL DIMENSIONS FOR REFERENCE ONLY -

REGULATORY COMPLIANCE:
RoHS, CE

UNLESS OTHERWISE SPECIFIED,
DIMENSIONS ARE IN INCHES [mm]
DIMENSIONAL TOLERANCES:
.X = ±.1 [2.54]
.XX = ±.01 [.25]
.XXX = ±.005 [.13]

ANGULAR TOLERANCES:
ALL = ± 1°

PROJECTION



APPROVALS		DATE	 45 BEECHWOOD DRIVE NORTH ANDOVER, MA 01845	
DRAWN BY B.PUCHASKI		08/22/13		
CHECKED BY P.PESA		08/22/13	CATEGORY LIGHTNING PROTECTORS	
APPROVED BY P.PESA		08/22/13	PRODUCT DESCRIPTION LP REPLACEMENT PCB ASSEMBLY HYP291	
CONFIGURATION DETAILS OF UNDIMENSIONED FEATURES MAY VARY		SIZE A	FSCM NO. 43321	DWG. NO. ALPR-HYP291
COLOR VARIATIONS MAY OCCUR		SCALE: NONE	CAD FILE: ALPR-HYP291.SLDDRW	REV. A
		SHEET 1 OF 1		