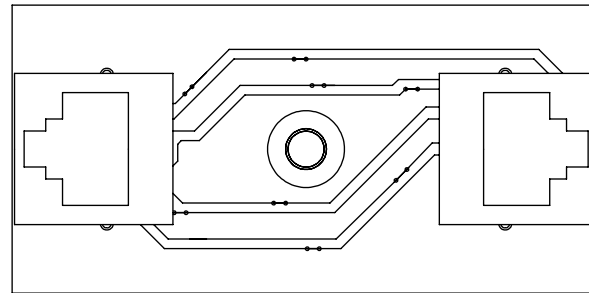
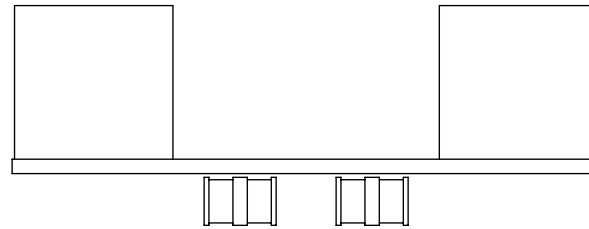
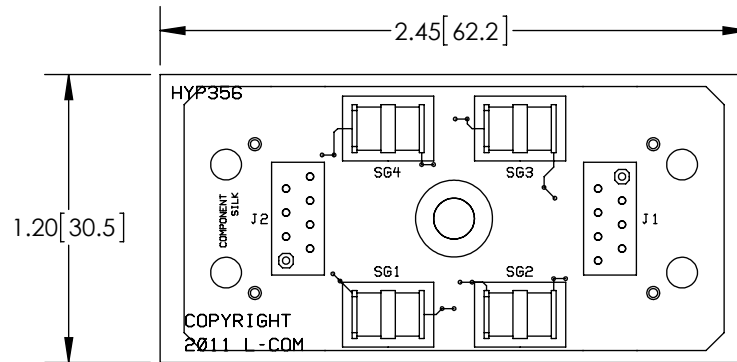



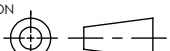
THE INFORMATION CONTAINED IN THIS DRAWING IS THE SOLE PROPERTY OF L-COM, INC. ANY REPRODUCTION IN PART OR WHOLE WITHOUT THE WRITTEN PERMISSION OF L-COM, INC. IS PROHIBITED.

REVISIONS			
REV	DESCRIPTION	DATE	APPROVED
A	INITIAL RELEASE	9/14/12	D.GRIFFIN



**RoHS Compliant** ✓

NOTES:  
1- ALL PARTS SHALL BE PACKAGED AS PER L-COM SPEC PKG-00012  
- ALL DIMENSIONS FOR REFERENCE ONLY -

UNLESS OTHERWISE SPECIFIED, DIMENSIONS ARE IN INCHES [mm]  DIMENSIONAL TOLERANCES:  .X = ±.1 .XX = ±.01 .XXX = ±.005  ANGULAR TOLERANCES:  ALL = ± 1°	APPROVALS	DATE	 45 BEECHWOOD DRIVE NORTH ANDOVER, MA 01845			
	DRAWN BY B.PUCHASKI	09/13/12				
	CHECKED BY P.PESA	09/13/12	CATEGORY  LIGHTNING PROTECTORS			
	APPROVED BY P.PESA	09/13/12	PRODUCT DESCRIPTION  LP REPLACEMENT PCB ASSEMBLY HYP356			
PROJECTION 	CONFIGURATION DETAILS OF UNDIMENSIONED FEATURES MAY VARY		SIZE <b>A</b>	FSCM NO. <b>43321</b>	DWG. NO. <b>ALPR-HYP356</b>	REV. <b>A</b>
	COLOR VARIATIONS MAY OCCUR		SCALE: NONE		CAD FILE: ALPR-HYP356.SLDDRW	SHEET 1 OF 1