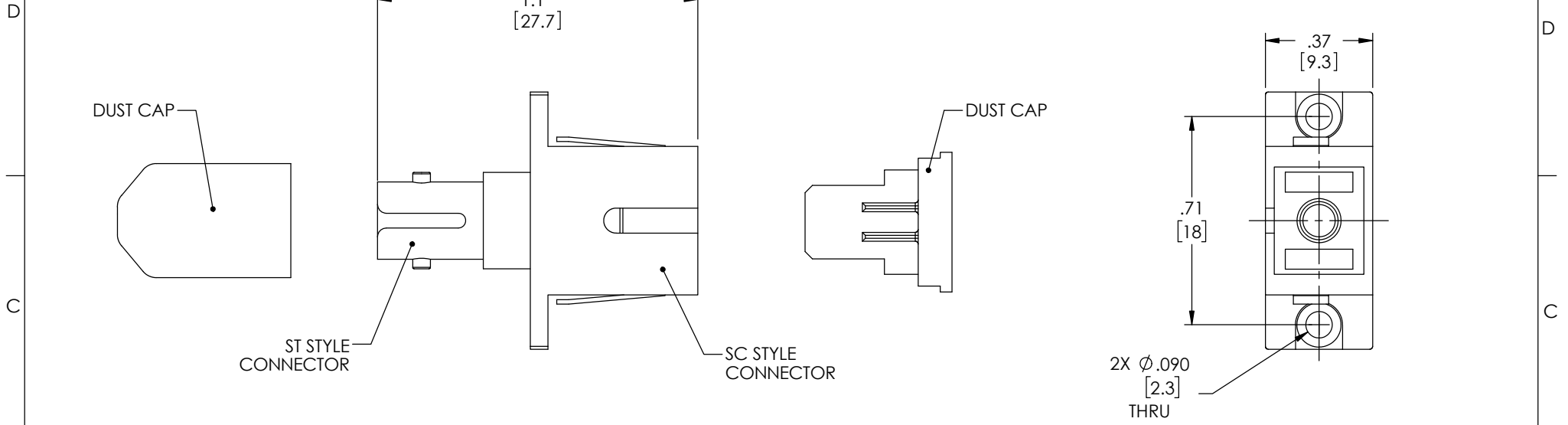


THE INFORMATION CONTAINED IN THIS DRAWING IS THE SOLE PROPERTY OF L-COM, INC. ANY REPRODUCTION IN PART OR WHOLE WITHOUT THE WRITTEN PERMISSION OF L-COM, INC. IS PROHIBITED.

REVISIONS			
REV	DESCRIPTION	DATE	APPROVED
A	DRAWING REPLACES FOA-211-OD1	9/24/14	D. CASTRO
B	ECN 10609 SLEEVE MATERIAL FROM BRONZE TO CERAMIC	08/18/20	PHOSPODAR



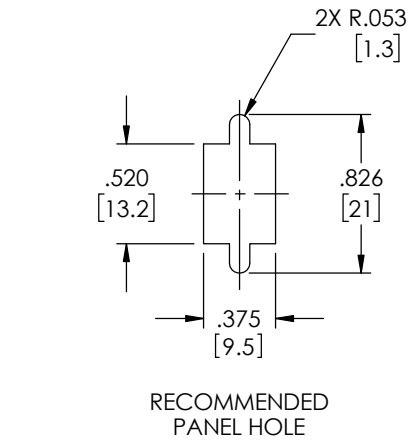
NOTES:


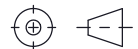
B

MATERIAL:
 SLEEVE: CERAMIC.
 MOUNTING CLIP: STAINLESS STEEL.
 SPRING LEVER: ENGINEERING PLASTIC.
 ST BODY: ZINC ALLOY.
 RIVET: COPPER.
 SC BODY: ZINC ALLOY.
 ST DUST CAP: PVC.
 SC DUST CAP: ENGINEERING PLASTIC.

FINISH:
 ST BODY: NICKEL.
 RIVET: TIN.
 SC BODY: NICKEL.

MISCELLANEOUS:
 SHIPPED WITH DUST CAPS INSTALLED.
 COMPONENT SHALL BE INDIVIDUALLY PACKAGED IN ACCORDANCE WITH L-COM SPEC. PS-0031.
 MAX RECOMMENDED PANEL THICKNESS: 0.12"



UNLESS OTHERWISE SPECIFIED, DIMENSIONS ARE IN INCHES [mm] OVERALL CABLE LENGTH TOLERANCE: ≤12 [305] = +1 [25] / -0 >12 [305] ≤60 [1524] = +2 [51] / -0 >60 [1524] ≤120 [3048] = +4 [102] / -0 >120 [3048] ≤300 [7620] = +6 [152] / -0 >300 [7620] = +5% / -0 ALL OTHER DIMENSIONAL TOLERANCES: .X = ± .2 [5] FRACTIONS ± 1/32 .XX = ± .02 [5] ANGLES ± 1° .XXX = ± .005 [13]	APPROVALS C.MCCORMICK	DATE 01/12/2000	 50 High Street, West Mill, North Andover, MA 01845 USA. Phone: 1.800.341.5266 1.978.682.6936
	CHECKED BY D.PARHAM	01/12/2000	
THIRD-ANGLE PROJECTION 	APPROVED BY R.CARRICK	01/12/2000	PRODUCT DESCRIPTION ADPTR,REC/MTL ST-SC SMLPX CERAMIC
CONFIGURATION DETAILS OF UNDIMENSIONED FEATURES MAY VARY	COLOR VARIATIONS MAY OCCUR	SIZE A	CAGE CODE 43321
DWG. NO. FOA-211	REV. B	SCALE: NONE	CAD FILE: FOA-211.SLDDRW
SHEET 1 OF 1	SHEET 1 OF 1	SHEET 1 OF 1	SHEET 1 OF 1