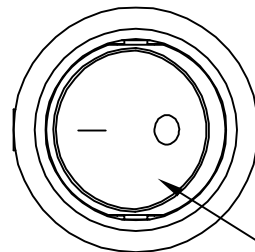
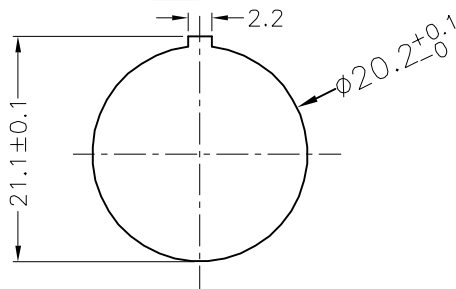


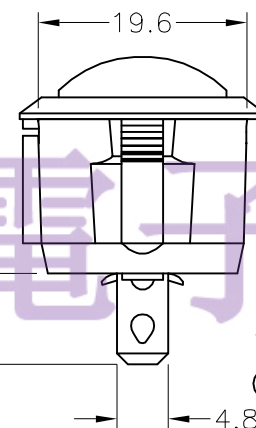
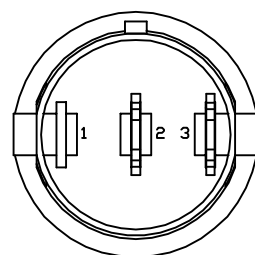
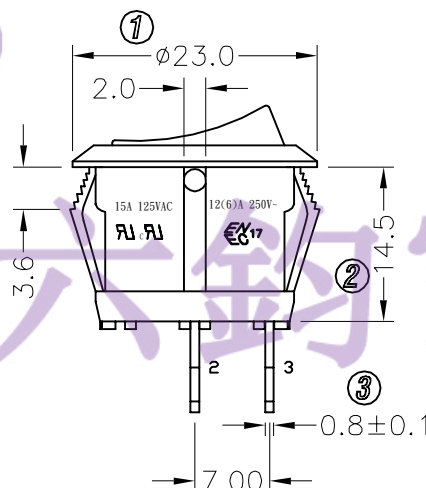
NOTES:

- 1.Circuit: ON/OFF
- 2.Operation force: $550 \pm 150\text{gf}$
- 3.Electrical rating: 8A 250VAC ULCUL CQC
15A 125VAC ULCUL CQC
12(6)A 250VAC ENEC
- 4.Contact resistance: $<30\text{m}\Omega$
5. Insulation resistance: $>100\text{M}\Omega$
(500VDC between open contacts)
- 6.Dielectric strength: $>1500\text{V}$ 1 minute
- 7.Color: cover is red, body is black.
- 8.Comply with the requitemints of the EU directive
2002/95/EC RoHs and subsequent amendments.
- 9.Life:The switch can satisfy the test standard
of BTP0001 and life requirement of all the puoducts.
- 10.Terminal:#187 TAB Terminal, accord the UL310 standard.
- 11.Satisfy the test requirement of PST-11,switch impact.
- 12.UL file NO.:E300970
- 13.The terminals shouldn't be taken out when the pushing
force is less than 80N and pulling force is less than 98N.

Panel cut out(Thickness: 3mm Max)

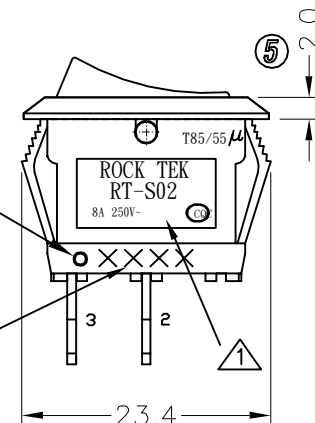


雾面红色上盖

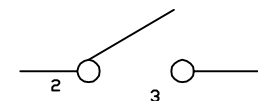


Mark

Date code
week year



Circuit of Switch



<div>5</div>	→	<div>10</div>	→	DIMENSIONAL TOLERANCES		APPROVED	CHECKED	DESIGN	DRAWN	ALL SIZE ARE IN	MM				
<div>4</div>	→	<div>9</div>	→	RANGE	TOLERANCE				SIMON 2018.06.23	SCALE	FIT			DRAWING NO.	REV
<div>3</div>	增加标识	<div>8</div>	→	X	±0.4					MAT'L	***				
<div>2</div>	500±200 → 550±150	<div>7</div>	→	X.X	±0.3					MATERIAL NO.					
<div>1</div>	取消VDE	<div>6</div>	→	X.XX	±0.2					RT-S02-117-R4NBR2 DC		WIF118012	A2		
NO	DESCRIPTION	NO	DESCRIPTION	ANGLES	±0.5°	LEGION ELECTRONIC & HARDWARE CO., LTD									

电话 : 0769-82310511-867
邮箱 : hooya89@hooya.hk
V : hooya89