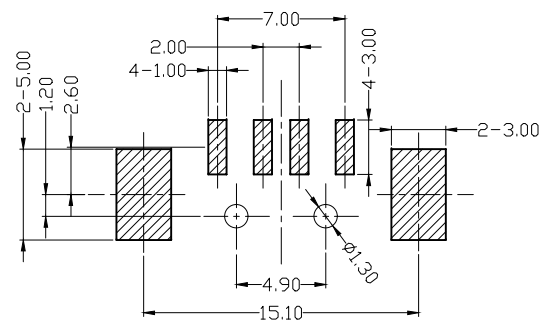
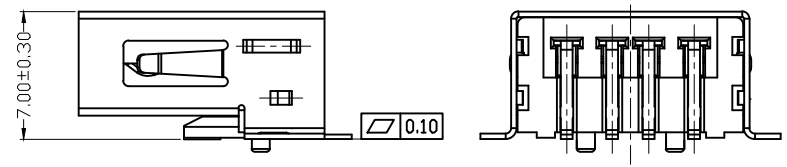
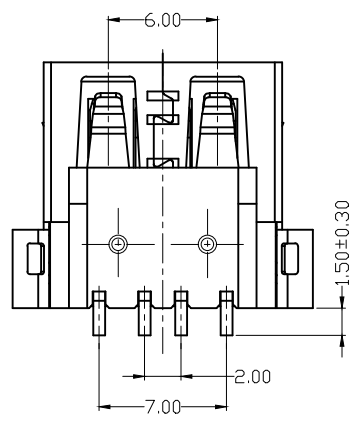
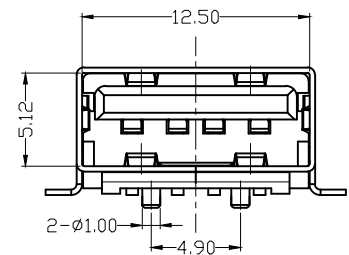
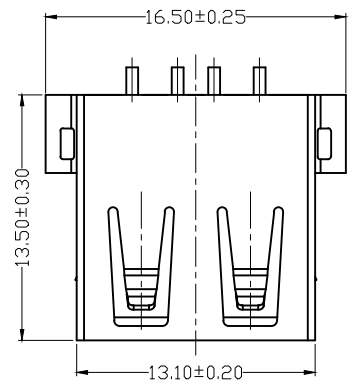


REV	LTR	DESCRIPTION	DATE	APPROVED
A0		依新料号编码原则发行图面	20230103	ZWJ



RECOMMEND P. C. B. LAYOUT

NOTES:

- MATERIAL SPECIFICATION:
  - HOUSING: BLACK LCP UL94V-0.
  - SHELL: SPCC T=0.30mm
  - CONTACT: COPPER ALLOY T=0.25mm
- PLATING:
  - CONTACT :  
G/F GOLD PLATING ON CONTACT AREA  
80~100u".Bright Tin PLATING ON SOLDER TAILS  
50u"Min.Nickel UNDERPLATING OVER ALL
  - SHELL: 50u"Min.Nickel Underplated Over All
- ELECTRICAL CHARACTERISTIC:
  - CURRENT RATING: 1A;
  - INSULATION RESISTANCE: 1000MΩ, MIN;
  - CONTACT RESISTANCE: 30mΩ, MAX;
  - DIELECTRIC WITHSTANDING VOLTAGE: 500V AC;
  - OPERATING TEMPERATURE: -20° C~+85° C
- MACHINE CHARACTERISTICS:
  - MATING FORCE: 3.57 Kgf MAX
  - UNMATING FORCE: 1.02 Kgf MIN.

TOLERANCES		HJ-Tech 东莞市皇捷通讯科技有限公司 手机: 15015262131 手机: 13714786106			
.X	±0.30				
.XX	±0.20	TITLE: USB A/F SMT 方脚全贴式无卷1.0柱子端子外露1.5			
.XXX	±0.10	DRAWING NO. : 2LS00S0024			
ANGLES ±3.00°					
APPD. :					
CHECK:					
DRAWN: ZWJ		REV. : A/0	SIZE: A4	UNIT: M M	SCALE: 1 : 1
				SHEET: 1 / 1	