

# 编码器规格书

## ENCODERS SPECIFICATIONS

适用型号 : ED16-D 系列  
 APPLICABLE MODELS: ED16-D Series

### 一 构造 CONSTRUCTION

形状,寸法,依照图面规定

外观 各部应良好无锈蚀、裂痕、电镀不良现象  
 APPEARANCE: EVERY PART SHOULD BE FINISHED NOT TO EXIST RUST  
 FLAW CRACK AND PLATING

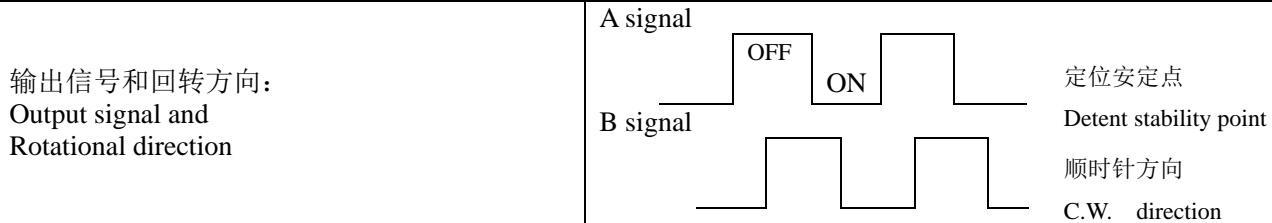
### 二 机械的性能 (Mechanical characteristics)

ITEMS	SPECIFICATION
全回转角度: Total rotational angle,	360°
回转力度: Rotational torque	3~24mN.m 30~240gf.cm
轴押引强度: Push-pull strength	50N/5.1Kg max
C.C.位置: Click position	<input type="checkbox"/> 0 <input checked="" type="checkbox"/> 24 detent

### 三 电气的性能 (Electrical characteristics)

ITEMS	SPECIFICATION
定格电力: Ratings	5V DC.0.5mA
最高使用电流: Maximum operating voltage	5mA
绝缘抵抗: Insulation resistance	100MΩ min. at 50V DC
耐电压: Voltage proof	50V AC
使用环境温度: Usage environment temperature	-20°C~+70°C

滑动杂音:  
Slider noise (突跳 Bounce)  $t1, t3 \leq 3ms$  (测定条件:回转速度 360° /s Test conditions 360° /s)  
 $t2 \leq 2ms$

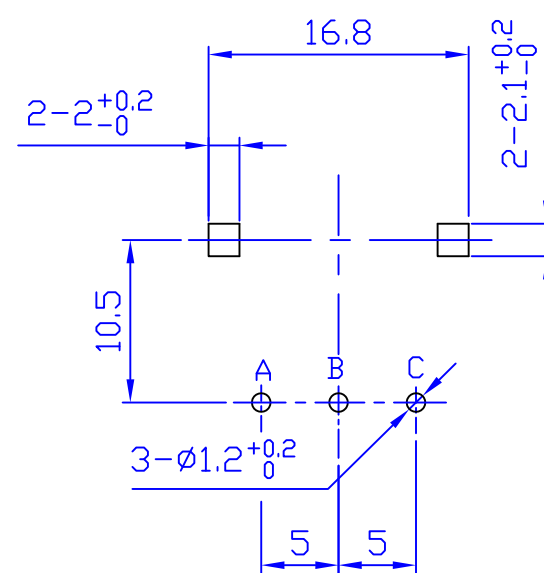
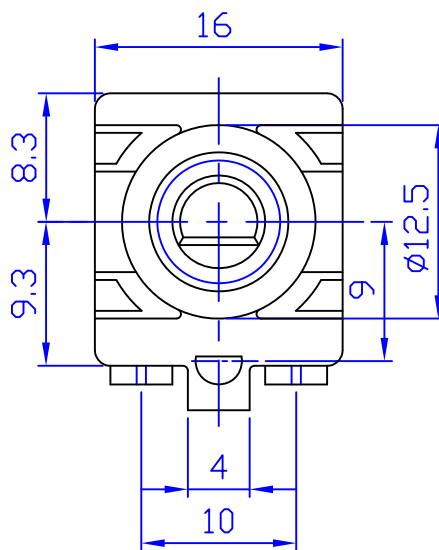
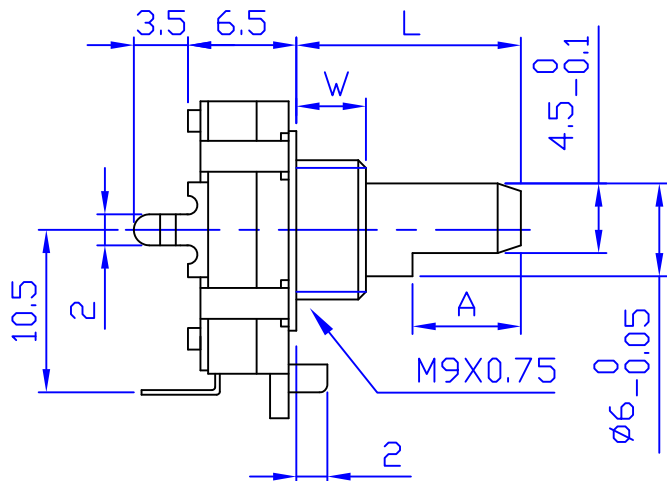
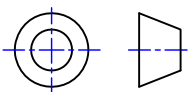


### 四 开关性能 (Push-on switch specifications)

开关回路: Switch circuit	单极单投 single pole and single throw(push on)
开关移动量: (mm) Travel of switch	0.5 <sup>+0.4</sup> <sub>-0.3</sub>
开关作动力: Operating force of switch	6±3 N / 600±300gf.cm
定格电力: Ratings	DC5V 10mA(最小定格 DC5V 1mA) (minimum ratings DC 5V 1mA)
接触抵抗: Contact resistance	初期 100mΩ 寿命后 200 mΩ first period:100mΩ ,200mΩ after the end of useful life is reached
负荷寿命特性: Operating life	20,000 cycles min.

东莞市长泰尔电子有限公司  
 DONG GUAN CHANG TAI ER ELECTRONICS CO.,LTD

制作 Approved	审核 Examine	核准 Approve
 2016.09.28 谢敏	 2016.09.28 喻钊	 2016.09.28 彭先炎

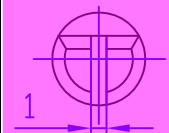
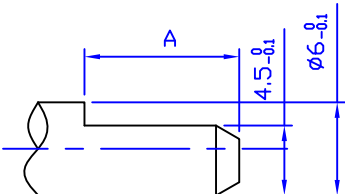


Mounting hole detail

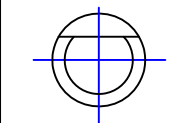
轴的类型:

F □ Shaft Style

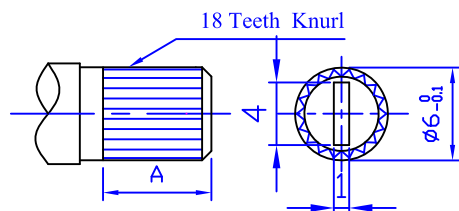
FA Shaft Style



FB Shaft Style

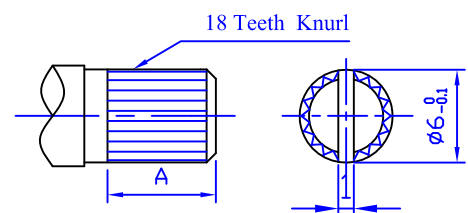


TB Shaft Style



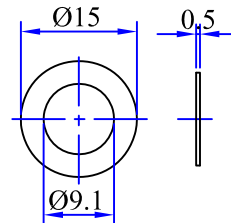
L	15	20	25			
A	7	12	12			

KA Shaft Style

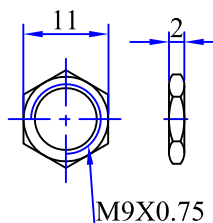


L	15	20	25			
A	6.5	11.5	14			

Washer垫圈(可选件)



Nut螺母(可选件)



product code	W
ED161120	5
ED161220	7
ED161320	10
ED161B20 轴套为塑胶料	7

东莞市长泰尔电子有限公司

未注尺寸公差	比例	2:1	版本	1.0	设计	审核	批准
L ≤ 1.0时 ±0.1	品名	ED161编码器组立图			工程部 2016.09.28 谢敏	工程部 2016.09.28 喻钊	工程部 2016.09.28 彭先炎
1.0 < L ≤ 10时 ±0.3	图号	ED161□20-					
10 < L ≤ 30时 ±0.5							
30 < L ≤ 100时 ±1.0							