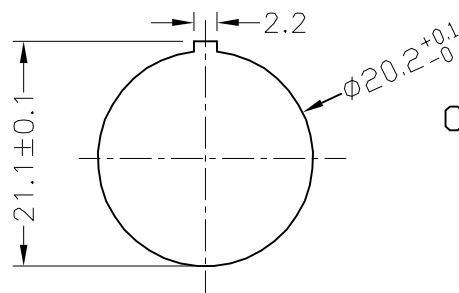


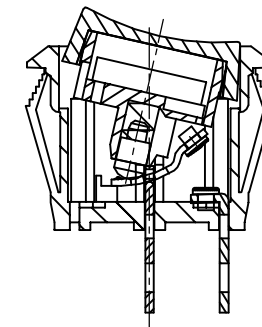
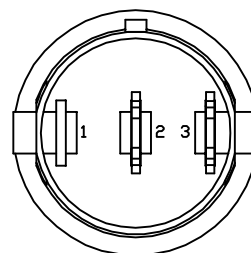
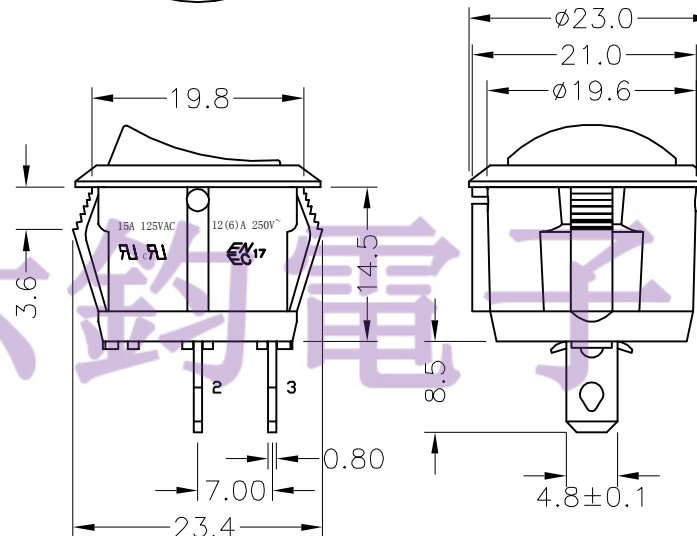
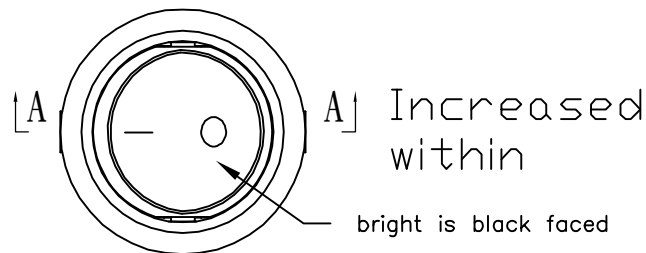
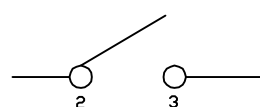
NOTES:

- 1.Circuit:ON/OFF
- 2.Operation force:500±200gf
- 3.Electrical rating:15A 125VAC
8A 250VAC
12(6)A 250V~
- 4.Contact resistance:<30mΩ
- 5.Insulation resistance:>100MΩ(500VDC
between open contacts)
- 6.Dielectric strength:>1500VAC 0.5mA 1 minute
- 7.Color: cover is black of bright, body is black.
- 8.Comply with the requitemints of the EU directive
2002/95/EC RoHs and subsequent amendments.
- 9.Life:The switch can satisfy the test standard
of BTP0001 and life requirement of all the puoducts.
- 10.Terminal:#187 TAB Terminal, accord the UL310
standard.
- 11.Satisfy the test requirement of PST-11,switch impact .
- 12.UL file NO.:E300970
- 13.The terminals shouldn't be taken out when the pushing
force is less than 80N and pulling force is less than 98N.

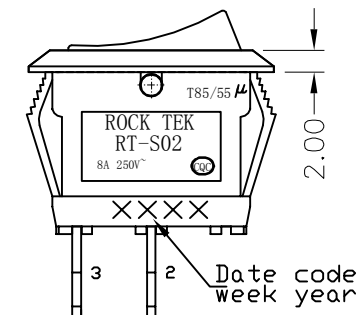
Panel cut out
(Thickness: 3mm Max)




Circuit of Switch



SECTION A-A



电话 : 0769-82310511-867
邮箱 : hooya89@hooya.hk
V : hooya89

<div>5</div>	→	<div>10</div>	→	DIMENSIONAL TOLERANCES		APPROVED	CHECKED	DESIGN	DRAWN	ALL SIZE ARE IN	MM	<div></div>	
<div>4</div>	→	<div>9</div>	→	RANGE	TOLERANCE				simon	SCALE	FIT		
<div>3</div>	→	<div>8</div>	→	X	±0.4					MAT'L	***		
<div>2</div>	→	<div>7</div>	→	X.X	±0.3					MATERIAL NO.			
<div>1</div>	→	<div>6</div>	→	X.XX	±0.2								
NO	DESCRIPTION	NO	DESCRIPTION	ANGLES	±0.5°	LEGION ELECTRONIC & HARDWARE CO., LTD				RT-S02A-117-R4NBB1 D/C		WIF112002	AO