

Specification Sheet

Part Number: 181-12007

Strong fingers prevent unwanted breaking.

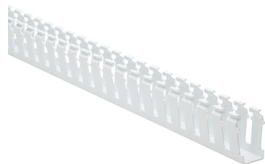
Fingers are easily deflected outward, allowing ready positioning of the wires within the slotted wall duct.

Restricted opening design in the finger of the duct helps keep wires in place.

Restricted opening prevents unintended removal of wires and permits any individual wire to be traced without disconnection.

Supplied with mounting holes to streamline installation.

Optional covers enhance protection and appearance.



Slotted Wall Wiring Duct, 1" x 2", Non-Adhesive, PVC, White, 30 ft/carton

Article Number 181-12007

Type SL1X2

Color White (WH)

Quantity Per box

Product Description HellermannTyton Slotted Wall Wiring Duct features break-away fingers that provide additional access for wire leads. Each section of the duct is provided with two score lines. The upper score line is used to break away fingers when a greater opening is required. The lower score line allows the sidewall to be smoothly cut for joints and T's.

Short Description	Slotted Wall Wiring Duct, 1" x 2", Non-Adhesive, PVC, White, 30 ft/carton
Global Part Name	SL1X2-PVC-WH
Length L (Imperial)	6.0
Length L (Metric)	1.83
Width W (Imperial)	1.0
Width W (Metric)	25.4
Height H (Imperial)	2.07
Height H (Metric)	52.6
Mounting Hole Centers (Imperial)	4.0
Material	Polyvinylchloride (PVC)
Material Shortcut	PVC
Halogen Free	No
UV Resistant (Yes/No)	No
Operating Temperature	+122°F (+50°C)

Reach Compliant (Article 33)	No
ROHS Compliant	Yes
Certification/Specification	EN 50085-1:2005 + A1:2013 CSA EN 50085-2-3_1A UL
UL Recognized (US)	Yes
Package Quantity (Imperial)	30.0
Package Quantity (Metric)	9.14
Customs Number	3925900000

About HellermannTyton

HellermannTyton is a global manufacturer of cable management and identification solutions for automotive, solar, electrical, construction, industrial automation, broadband and other OEM markets. The company's integrated approach to product design, sustainability, production, quality assurance and delivery is optimized to benefit local and global customers. HellermannTyton operates in 39 countries, with North American headquarters in Milwaukee, Wisconsin. (www.hellermann.tyton.com).

© 2023 HellermannTyton. All Rights Reserved.

[Contact Us](#)

[RoHS/WEEE Compliance](#)

[Disclaimer](#)

[Terms and Conditions](#)