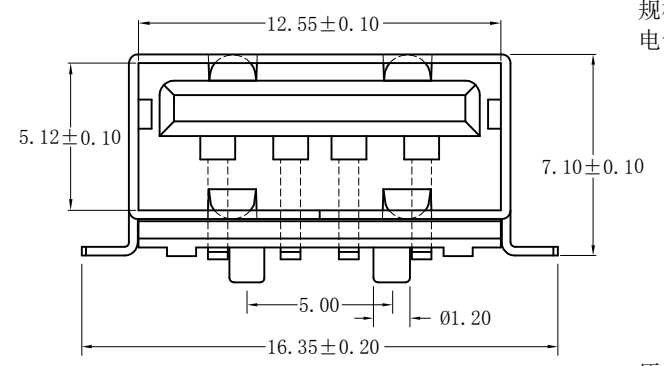
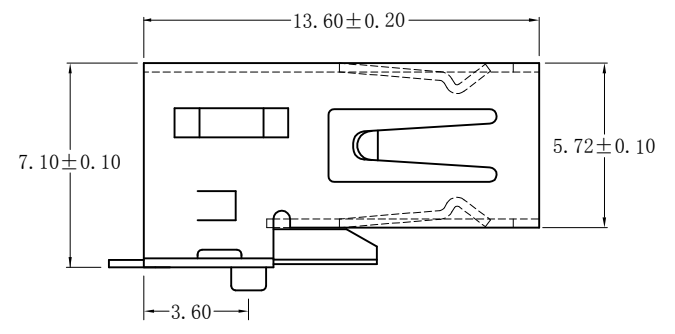


REV.	ECN.NO.	APPD.
A0	/	/



规格说明:Specifications:

电气特性:Electrical:

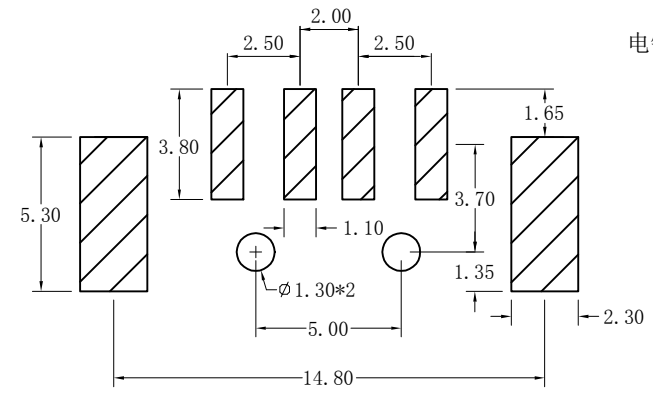
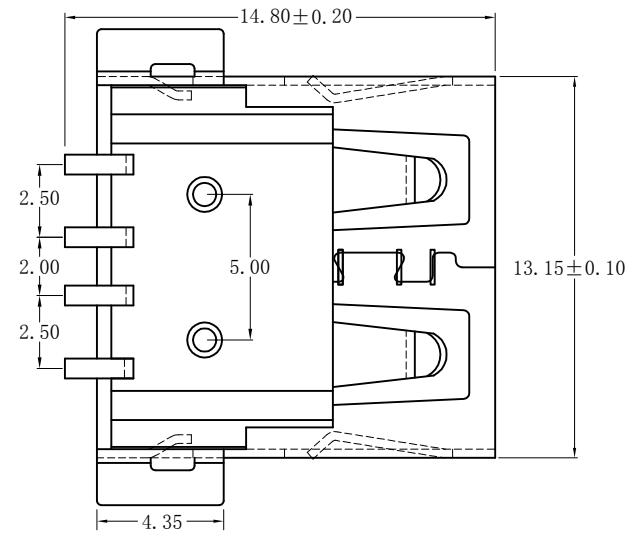
1. 额定电流: Current Rating
1.5A/contact terminal
2. 额定电压: Voltage Rating
30V DC
3. 接触阻抗: Contact Resistance
30 milliohms MAX
4. 耐电压: Dielectric Withstanding Voltage:
500 V AC For one minuter
5. 绝缘阻抗: Insulation Resistance:
1000MEGA ohms MIN

原材料:Raw material:

1. 塑胶: Plastic cement:
High Temperature Thermoplastics,
PBT/LCP Black/White
2. 端子: Contact: Copper Alloy C2680
3. 外壳: Shell: SPCC/Copper Alloy C2680

电镀: Electroplate:

1. 端子: Contact: Plated Gold in Mating Area;
Tin On Solder Talls
2. 外壳: Shell:
Nickel Plating



TOLERANCE UNLESS OTHERWISE SPECIFIED	
.XXX ±0.10	.X' ±3'
.XX ±0.20	.XX' ±2'
.X ±0.30	



APPROVED		PART NAME:	Type-A 母座 卧贴			
CHECKED		PART No:	BX-TYPE-A-MWT4P			C
DRAWN		PROJECTION:	UNIT:	SCALE:	SHEET:	REV.
DATE			mm	1:1	10F1	A0