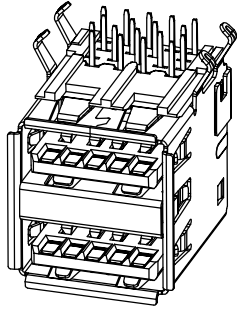
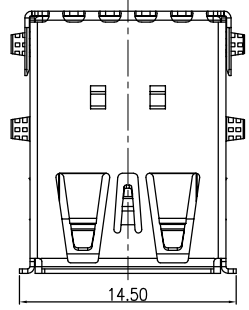
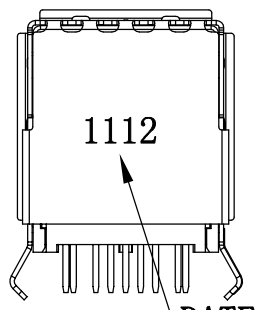
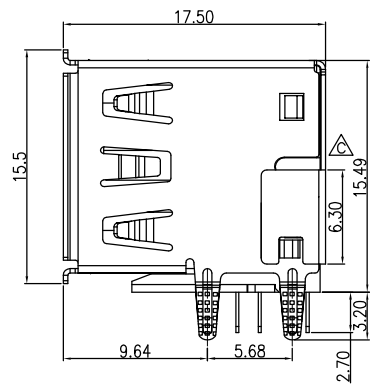
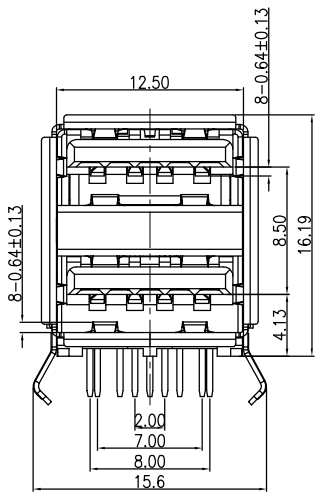


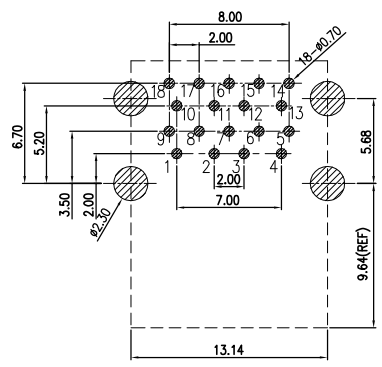
| | | |
|------|---------|-------|
| REV. | ECN.NO. | APPD. |
| B | / | |
| C | / | |
| A2 | / | |



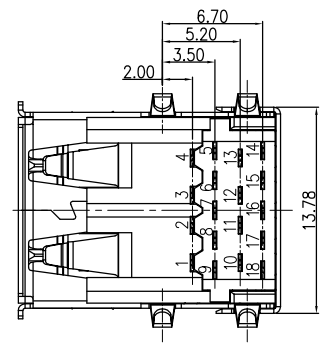
- Remark:
- MATERIAL:
 - Housing:thermoplastic plastics.
 - terminals:Copper Alloy
 - Front Shell:Copper Alloy/SPCC.
Middle Shell:SPCC
 - characteristics:
 - Rating Voltage : 30V AC.
 - Rating Current:PIN1&PIN4(Vbus&Corresponding ground PIN)
1.8A MAX Other PINS 0.25A min.
 - Contact Resistance:PIN1&PIN4:30 mΩ MAX. Other PINS: 50 mΩ
 - Insulation Resistance:100 MΩ MIN.
 - Withstanding Voltage:AC 100V between adjacent contacts
 - MECHANICAL CHARACTERISTIC:
 - INSERTION FORCE:35N MAX
 - EXTRACTION FORCE (INITIAL) : 10N MIN
 - EXTRACTION FORCE (AFTER TEST) :8N MIN
 - The lifting weight of the product before durability is 10N Min. 3s
 - Life test:1500Cycles MIN.
 - Temperature Range: -30℃~+80℃.



DATE
1112
表示12月
表示2011年



PCB LAYOUT REFERENCE



| Pin Number | Signal Name | Pin Number | Signal Name | TOLERANCE UNLESS OTHERWISE SPECIFIED | |
|------------|-------------|------------|-------------|--------------------------------------|---------------------|
| 1 | VBUS | 10 | VBUS | .XXX ±0.10 | .X' ±3' .XX' ±2' |
| 2 | D- | 11 | D- | .XX ±0.25 | |
| 3 | D+ | 12 | D+ | .X ±0.35 | |
| 4 | GND | 13 | GND | APPROVED | |
| 5 | StA_SSRX- | 14 | StA_SSRX- | CHECKED | |
| 6 | StA_SSRX+ | 15 | StA_SSRX+ | DRAWN | |
| 7 | GND_DRAIN | 16 | GND_DRAIN | DATE | |
| 8 | StA_SSTX- | 17 | StA_SSTX- | | |
| 9 | StA_SSTX+ | 18 | StA_SSTX+ | | |
| Shell | Shield | | | | |



| | | | | |
|-------------|-----------------|--------|--------|-------|
| PART NAME: | Type-A 母座 弯插 | | | |
| PART No: | BX-TYPE-A-MWC99 | | C | |
| PROJECTION: | UNIT: | SCALE: | SHEET: | REV.: |
| | mm | 1:1 | 1 OF 1 | A2 |