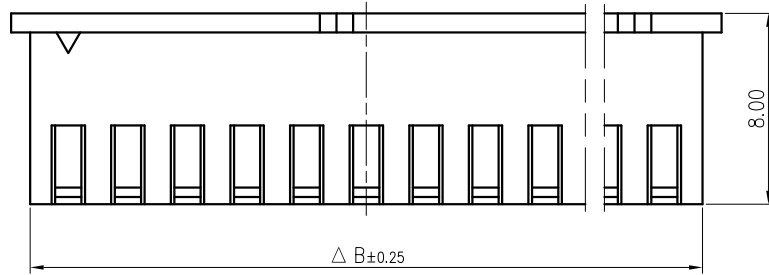
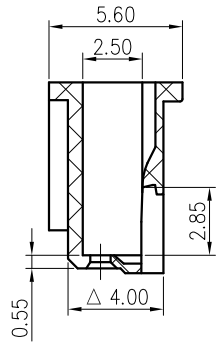
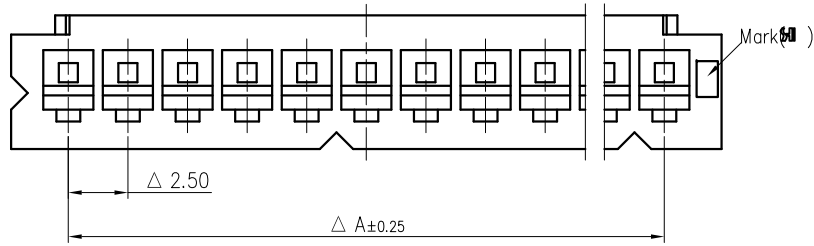


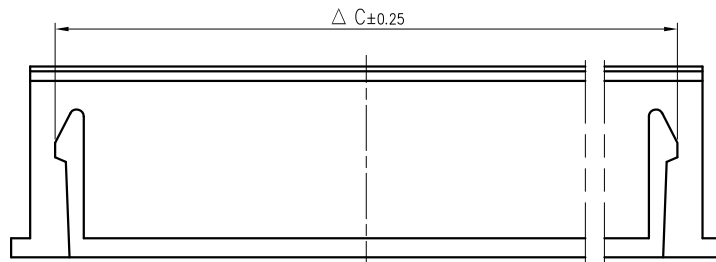
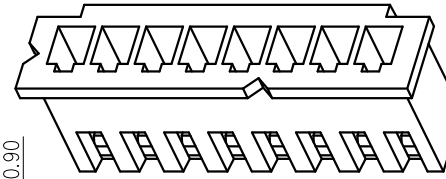
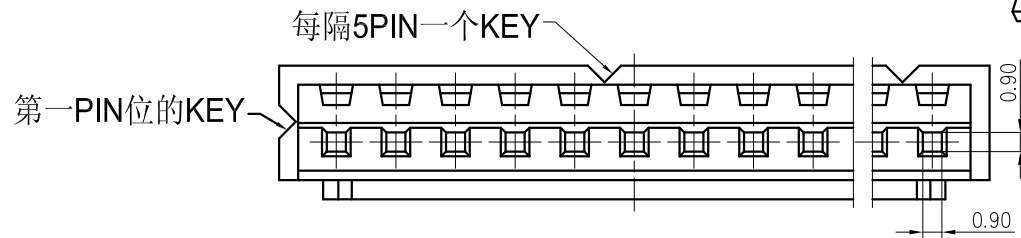
标记 MARK	更改内容 MODIFICATION	日期 DATE	修改 DRAW	核准 APPROVE



技术要求Specification:

- 1、材质Material: PA66 UL94V-0;
- 2、额定电流 Current rating:3.0A AC,DC
- 3、额定电压 Voltage rating: 250V AC,DC
- 4、温度范围 Temperature range:-25℃to+85℃
- 5、接触电阻 Contact resistance:≤20mΩ
- 6、绝缘电阻 Insulation resistance:≥1000MΩ
- 7、耐压 Withstand voltage:1000V AC/minute
- 8、塑件表面平整光洁,无明显的毛刺、气泡、变形、浇口拉伤、缺料等不良现象。

Plastic surface smooth and clean, no obvious burrs, bubbles, distortion, gate strain, lack of material and other undesirable phenomena.



线数	型号	尺寸			
		A	B	C	D
2	SH25001-2Y	2.50	5.70	3.70	3.70
3	SH25001-3Y	5.00	8.20	6.20	6.20
4	SH25001-4Y	7.50	10.70	8.70	8.70
5	SH25001-5Y	10.00	13.20	11.20	11.20
6	SH25001-6Y	12.50	15.70	13.70	13.70
7	SH25001-7Y	15.00	18.20	16.20	16.20
8	SH25001-8Y	17.50	20.70	18.70	18.70
9	SH25001-9Y	20.00	23.20	21.20	21.20
10	SH25001-10Y	22.50	25.70	23.70	23.70
11	SH25001-11Y	25.00	28.20	26.20	26.20
12	SH25001-12Y	27.50	30.70	28.70	28.70
13	SH25001-13Y	30.00	33.20	31.20	31.20
14	SH25001-14Y	32.50	35.70	33.70	33.70
15	SH25001-15Y	35.00	38.20	36.20	36.20
16	SH25001-16Y	37.50	40.70	38.70	38.70

TOLERANCE UNLESS OTHERWISE SPECIFIED		*: Inspection Item					
.X±0.30	X.° ±1°	:Cp/Cpk and SPC Control Item	材料 MATERIAL PA66				名称
.XX±0.20	.X° ±			料厚	编号 DWG NO.	单位	mm
.XXX±0.10	.XX° ±			料宽		比例	1:1
制图	审核	日期	角法		规格书		
DRAWN	CHECKED	DATE	PROJ.				